

Get on board a Swiss Train.

mystsnet.com



Switzerland.
by train, bus and boat.

We're at your service.



Swiss Travel System.



Martin Oester

Sales & Marketing Manager
North America

Phone +1 212 757 5944 Ext. 233

Cell +1 929 412 4716

martin.oester@swisstravelsystem.com

Swiss Travel System Ltd.
c/o Switzerland Tourism
608 Fifth Avenue, Suite 603
New York, NY 10020
mystsnet.com



Angel Alvarez
Regional Sales Director

RAIL EUROPE®

a Trusted Distributor for



E-learning: Swiss Travel System & Rail Europe Webinar series.



#1 May 14th (2PM)

Swiss Travel Pass & all the benefits

#2 May 28th (12PM)

Grand Train Tour and Scenic Journeys

#3 June 11th (12PM)

Swiss train stations and luggage services

#4 June 25th (12PM)

Get on-board a Swiss train



- Time for more in depth-training about Swiss rail
- Time to ask your questions
- Chance to win a Swiss watch from

BUCHERER
1888



RAIL EUROPE

a Trusted Distributor for





Switzerland.
by train, bus and boat.



▪ Albula – Bernina Line, St. Moritz

Reason Panorama.

Traveling can be so beautiful.



- Fascinating landscape and breathtaking views on trains, buses, boats and mountain railways
- Panoramic windows reaching far up to the ceiling on premium panoramic trains
- Experience Switzerland from the train up close

Reason Convenience.

Traveling can be so comfortable.



The Swiss Travel System offers comfort at the highest level:

- Generous compartments with comfortable seats offer ample space to stretch one's legs
- On board restaurants offering specialities from all Swiss regions
- Luggage Services



Reason Accessibility.

Traveling can be so simple.



- Changing transportation is wonderfully easy in Switzerland – thanks to the densest public transport network in the world
- Regular interval timetables guarantee synchronised connections
- Easy and direct train connections from neighbouring countries

Reason Swissness.

Traveling can be so authentic.



- Switzerland stands for reliability, quality and safety – this holds true for public transport
- Locals travel by public transport and that's where you meet them
- Do it the Swiss way travel by train, bus and boat

1st class.

Traveling in comfort.



- Spacious 2 x 1 seating configuration
- Extra comfort
 - Roomy seats
 - Plenty of legroom
- Business zones, quiet zones
- Overhead reading lights
- Power outlets

2nd class.

Traveling on a budget.



- Comfort on a budget
- 2 x 2 seating configuration
- Overhead reading lights
- Power outlets

Panoramic Cars.

Spectacular views.



- Large panoramic windows
- Full view of mountain peaks
- Open and spacious
- Spectacular scenery

Childrens carriage.

Playground on wheels.



- Unique to Switzerland
- Playground onboard select trains
- Colouring and activity book
- Perfect traveling environment for kids

IC Double decker.

Lounge seating.



- InterCity trains only
- Business zones with optimised data transfers, amplifiers and work surfaces
- Quiet zones in 1st class

Luggage handling.



Switzerland.
by train, bus and boat.



PostBus.

“the Yellow class”.



- unmistakably Swiss
- Discover the countryside and scenic routes
- Famous Post Horn
- Free WiFi



Cableways & gondolas.



Schilthorn

- 594 cableways
- Cabrio Stanserhorn, Schilthorn, Glacier 3000, Grindelwald-First, Matterhorn Glacier Paradise, Titlis, Rothorn

Cog railways, funiculars.



- 12 cog railways, 51 funiculars
- Rigi, Stoos, Pilatus, Gornergrat, Jungfrauoch – Top of Europe, Harder Kulm, Brienzner Rothorn, Monte Generoso, Rochers de Naye, Schynige Platte, Sunegga



Switzerland.
by train, bus and boat.

On-board gastronomy.

Bistro car.

Snacks & beverages.



- In Switzerland nostalgic and state-of-the-art means of public transport can easily be combined
- Eventful: Rides on theme routes (e.g. cheese train)
- Innovative: extraordinary experiences in public transport (e.g. a dinner in a panoramic cabin of a cableway)

Restaurant car.

Dining in style.



- Enjoy full restaurant service
- Hot & cold options
- Meals prepared fresh on board

A family of four is seated at a table on a boat, enjoying a meal. The father, on the left, is wearing a light blue button-down shirt and holding a glass of red wine. The mother, on the right, is wearing a light-colored sweater and also holding a glass of red wine. Two young girls are seated in front of them, eating. The table is set with plates of food, including what appears to be pasta and fries, and glasses of water and wine. The boat has a yellow railing, and the background shows a large body of water, a town on the opposite shore, and a ferry boat in the distance. The text "Dining on the Swiss lakes." is overlaid on the image.

Dining on the Swiss lakes.

A scenic landscape photograph featuring a red Bernina Express train crossing a bridge over a vibrant turquoise lake. In the foreground, a small waterfall cascades over dark rocks. The background is dominated by majestic, snow-dusted mountain peaks under a bright blue sky with scattered white clouds. The terrain is lush with green grass and patches of yellow and pink wildflowers.

A respite for you and nature.

Rhaetian Railway – Hydroelectric power on rails.



- Since 2013 the RhB has obtained 100% of the electrical energy for traction vehicles and real estate from hydropower
- Ongoing optimizations: renewable heating energy, modern recycling concepts etc.

Rhaetian Railway at Lago Bianco, Grisons



Switzerland.
by train, bus and boat.

Funi in Fribourg

– A marvel of the art of engineering.



- Switzerland's last existing water-powered funicular railway
- Completely without electricity or exhaust fumes

Funiculaire in Fribourg

By bike on to train, bus and boat.



Switzerland.
by train, bus and boat.



Car train.



Switzerland.
by train, bus and boat.



At full steam into summer.



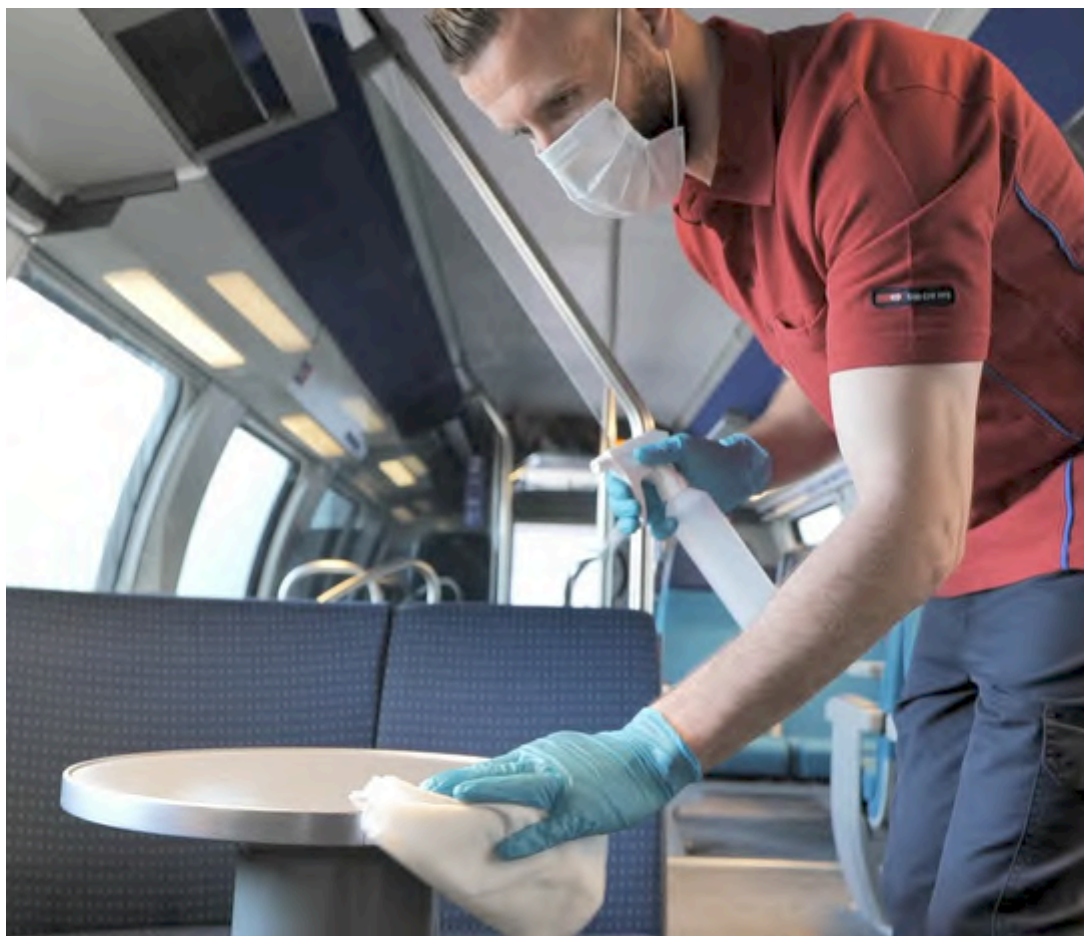
Switzerland.
by train, bus and boat.

Clean and safe: safety concept.

6 measures for a safe journey:

1	2	3	4	5	6
					
Observe hygiene rules.	Keep your distance.	Wear a mask if you can't keep the distance.	Avoid rush hour.	Buy tickets online.	We clean regularly.

Why public transport is worth using.



Switzerland is – and has always been – a clean country. Hygiene is a huge priority here: trains and stations are regularly being cleaned and disinfected.

In addition, guests may use the toilet facilities on trains and at stations free of charge to wash their hands.

Why public transport is worth using.

- Tickets are not tied to a certain train. Guests are thus very flexible and may use trains outside rush hour. Most connections are available at half-hour intervals.
- Luggage can be conveniently sent door-to-door.



Why public transport is worth using.

- Via the SBB app, upgrades from 2nd class to the lesser occupied 1st class are spontaneously possible at any given time
- 1st class is more spacious and offers more leg room
- The SBB app displays the expected occupancy for every line and train
- That way guests can flexibly choose a less occupied train



2. class



1. class



Swiss Travel System ✓

5. Juni um 12:56 · 🌐

Up we go again! 🚆 As of 6 June, most Swiss mountain railways and trains will resume their operations 🤗 All you need to know about timetables and hygiene measures: bit.ly/public-transport-corona



Switzerland.
by train, bus and boat.

- Public transport has been certified with the “Clean&Safe” label from Switzerland Tourism. For a safe and clean journey through Switzerland.



- Overview public transport status: mystsnet.com

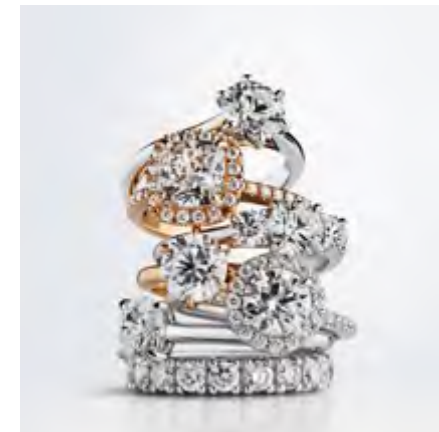


BUCHERER 1888
THE SWISS HOUSE OF WATCHES AND FINE JEWELLERY

BUCHERER
1888

BUCHERER – KEY FACTS

- **Independent family-owned business**
- **World's largest retailer** of watches and jewellery
- Own watch brand **Carl F. Bucherer**
- Own jewellery brand **Bucherer Fine Jewellery**
- Premium partner of **Rolex** since 1924
- **15 boutiques in Switzerland:** Lucerne, Basel, Berne, Crans Montana, Geneva, Interlaken, Lausanne, Locarno, Lugano, St. Gallen, St. Moritz, Zermatt, Zurich
- **100+ boutiques in 7 countries** (CH, DE, FR, AT, DK, USA)
- **Tax-free shopping**



BUCHERER
1888

Win a Bucherer watch and a Swiss surprise box!



B SWISS
Prestige

BUCHERER
1888



- Prizes will be fulfilled by June 30, 2020

Switzerland Tourism Trade Team North America.



New York



Paolo Lunardi



Florin Eggenberger

San Francisco



Mirko Capodanno

Toronto



Pascal Prinz

Swiss Travel System



Martin Oester



Nicole Fischler



Isabelle Rapisarda

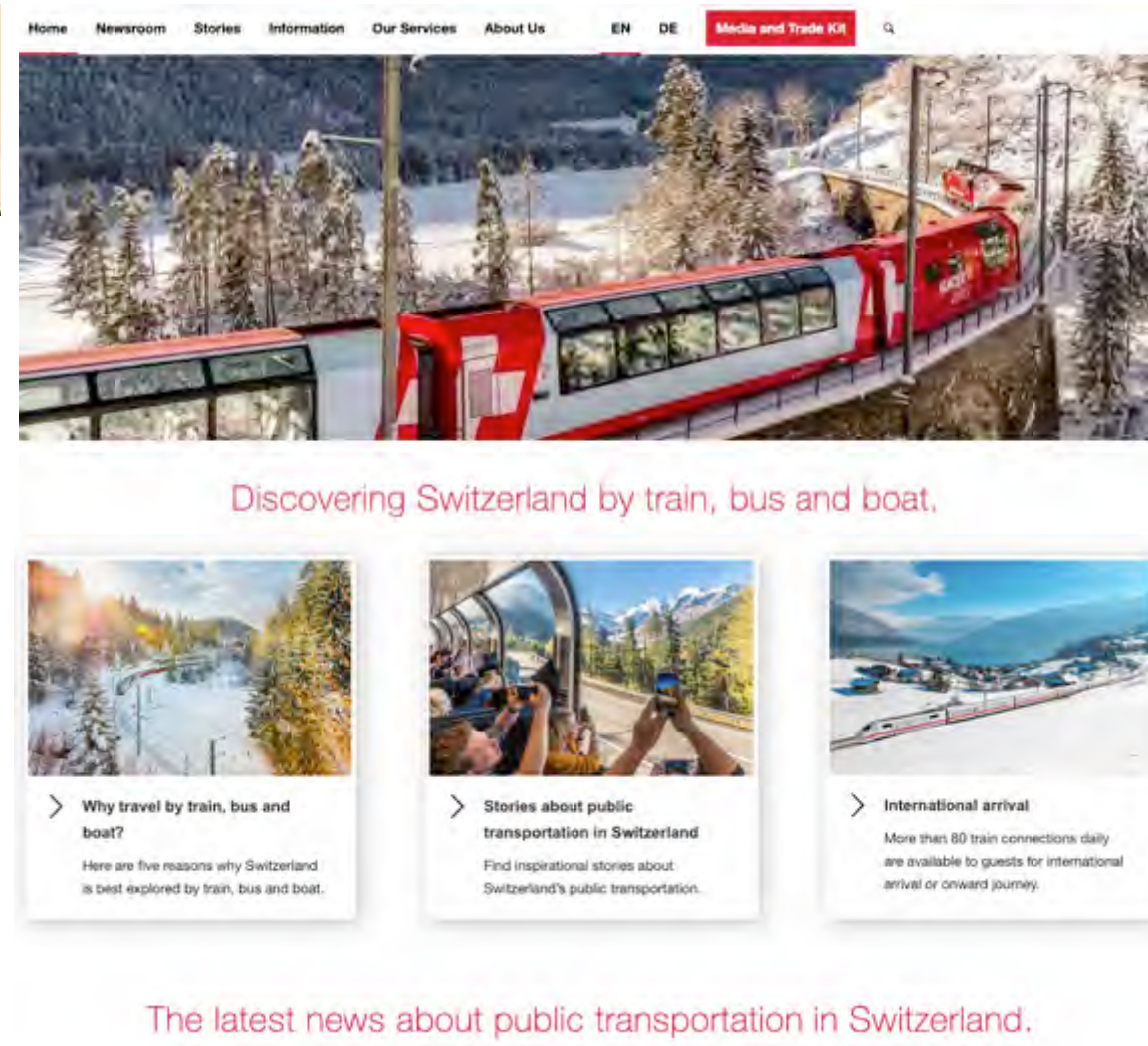
nyc.trade@switzerland.com / 1-800-794-7795 option 3

www.myswitzerland.com/trade

Swiss Travel System Media & Trade Platform.



- Theme texts
- Press releases
- Backgrounder / Background info
- Pictures & Video Sheet
- Sales Manual
- Product Factsheet
- Distribution News
- Newsroom & Stories on mystsnet.com
- All information: **mystsnet.com**





WELCOME ABOARD

Welcome to Europe – one of the most dynamic, vibrant, cultural, historical and fascinating places on the planet. On one continent you can discover thousands of years of history, some of the best food and wine in the world, art, architecture, nature and adventure. And what better way to do and see it all than traveling in comfort and style by rail?

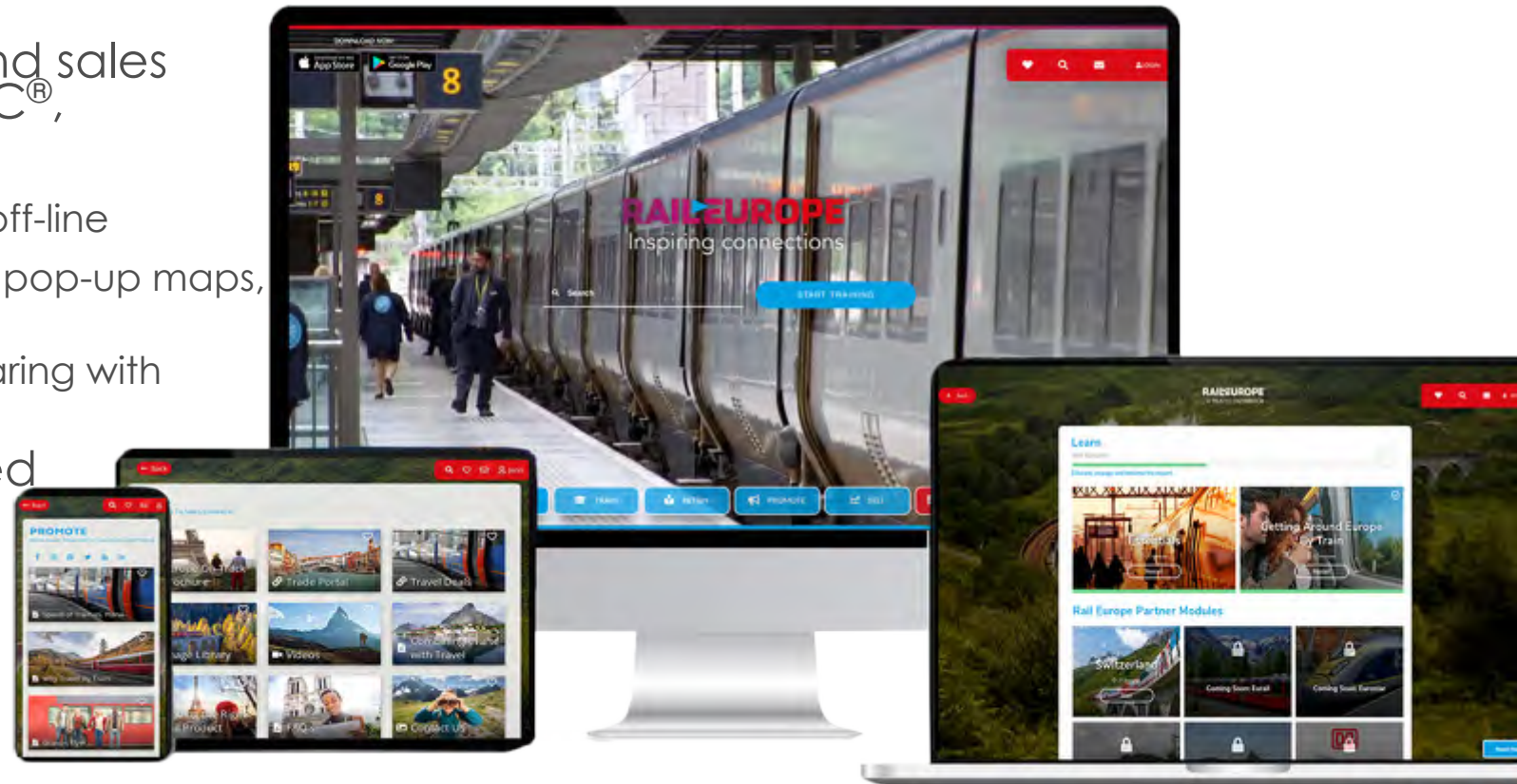
Europe is the rail capital of the world, with nearly 150,000 miles of track which span to the farthest corners of the continent. Compared to air travel or car rental (which can be costly, inefficient and not eco-friendly), the multitude of rail services offered daily gives travelers the ultimate flexibility in planning itineraries. Best of all, rail travel is Europe's most sustainable form of transportation.

NEW & IMPROVED TRAC[®]

Trac-raileurope.com

RAILEUROPE[®]

- ▶ Introducing a NEW training and sales enablement platform for TRAC[®],
 - ▶ Same familiar URL
 - ▶ App enabled for access on or off-line
 - ▶ Interactive training with videos, pop-up maps, progressive testing
 - ▶ Downloadable materials for sharing with clients to sell rail
- ▶ Additional modules introduced throughout the year
 - ▶ Switzerland module live!
- ▶ Opportunities for Prizes
- ▶ **Complete all the courses:**
 - ▶ Certified Rail Expert
 - ▶ CEU credits
 - ▶ Entered to WIN 1 of 4 \$250 Visa Gift Cards



SWITZERLAND MODULE

Incentive

Swiss Spin n Win

May – August; weekly

\$20 Amazon gift cards 6x week

Not everyone will win

Swiss Rail Expert Quiz

May – August,
monthly based on score

Amazon gift cards
1st place (1/month) \$200
2nd place (2/month) \$100
3rd place (4/month) \$50

Not everyone will win

CONTACT US



TRADE WEBSITES

US:

agent.raileurope.com

Canada:

agent.raileurope.ca



SUPPORT

CUSTOMER CARE:

800-438-7245*

SALES SUPPORT:

(866) 589-4953

US:

sales_us@raileurope.com

Canada:

sales_can@raileurope.com

GROUPS:

(800) 462-2577

groups@raileurope.com

*All travel agencies booking a minimum of \$5,000 in 2019 are eligible to reach us by phone. Consortia-affiliated travel agents are encouraged to visit their supplier page for details on specific phone access & toll-free numbers. Information may vary by consortia.

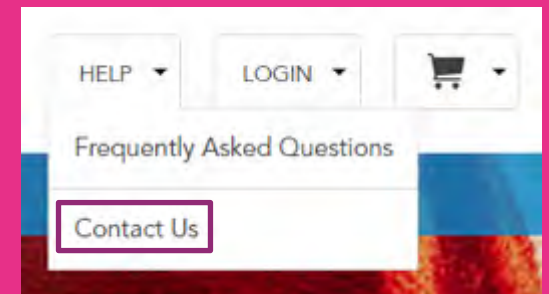
RAILEUROPE®



CONTACT US PAGE

Visit us online for:

- Customer Relations
- General Questions
- Payment Questions
- Commission Questions
- AND MORE!



Chat is temporarily unavailable

STAY CONNECTED

- ▶ Facebook: facebook.com/raileurope
- ▶ Instagram: instagram.com/raileurope
- ▶ Pinterest: pinterest.com/raileurope
- ▶ Rail Blog: blog.raileurope.com
- ▶ Twitter: twitter.com/raileurope
- ▶ YouTube: youtube.com/raileurope
- ▶ LinkedIn: <https://www.linkedin.com/company/raileurope/>

NEW: Trade Facebook Page

- ▶ <https://www.facebook.com/groups/RailEuropeTravelAdvisors/>



RAILEUROPE



Questions?



Switzerland.