

V-Cableway

JUNGFRAU
TOP OF EUROPE

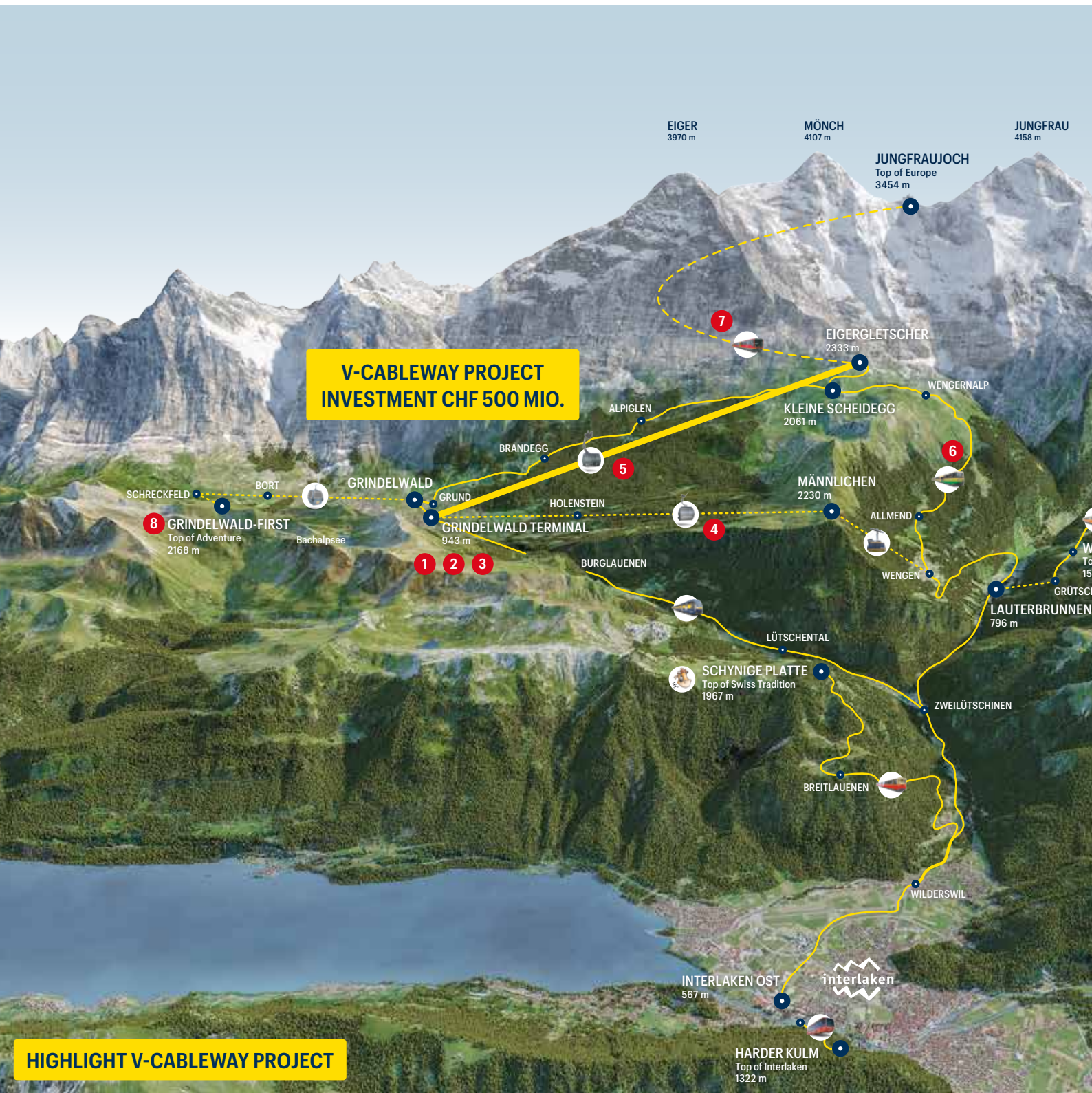
the future
is now

A new era is dawning.

A new structural marvel graces the Bernese alpine world:

The Jungfrau Railways V-Cableway Project!





HIGHLIGHT V-CABLEWAY PROJECT



STATION GRINDELWALD TERMINAL 1

Bernese Oberland Railway, new public transport station with connecting passage to the terminal (Eiger Express & GGM)



GRINDELWALD TERMINAL 2

Shopping experience in the valley station Eiger Express and GGM



GRINDELWALD PARKING 3

Grindelwald Terminal multi-storey car park



MÄNNLICHEN GONDOLA 4

Replacement of Grindelwald – Männlichen Gondola Cableway



Spectacular Drone Flight



MÜRREN
 INTEREGG
 Top of Family
 78 m
 HALP

OUR 4 TOP EXCURSIONS

JUNGFRAUJOCH – Top of Europe



Standing on the Jungfrauoch 3,454 m above sea level, you can feel it with your first step: this is a different world. It's one you have to experience.

HARDER KULM – Top of Interlaken



A breathtaking view awaits on Interlaken's local mountain – a must – see for all visitors of the Jungfrau Region.

SCHYNYGE PLATTE – Top of Swiss Tradition



The nostalgic cogwheel railway was inaugurated in 1893 and takes visitors through a gorgeous mountain landscape with a unique view of the Eiger, Mönch and Jungfrau.

GRINDELWALD-FIRST – Top of Adventure



Take a seat in the cable car and let it take you up the local mountain of the famous mountain village of Grindelwald.



Share your moments

@jungfrauochtopofeuropa
 #jungfrauoch

TOP EXCLUSIVE OFFER: PLATINUM CLUB

EIGER EXPRESS VIP GONDOLA



Enjoy the Eiger Express as a VIP

VIP GONDOLA – CABIN INTERIOR



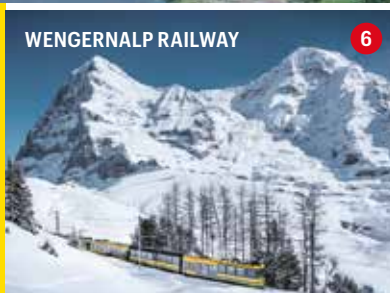
Book this very exclusive VIP offer
jungfrau.ch/vip



Eiger Express

5

The most modern tricable gondola in the world



WENGERNALP RAILWAY

6

Rolling stock replacement



JUNGFRAU RAILWAY

7

Rolling stock replacement



GRINDELWALD-FIRST

8

New bus terminal with direct connection to the First cable car from the Grindelwald Terminal.



Milestones

●
13 december 2019

Opening of the Grindelwald-Männlichen
Gondola Cableway and BOB station 1



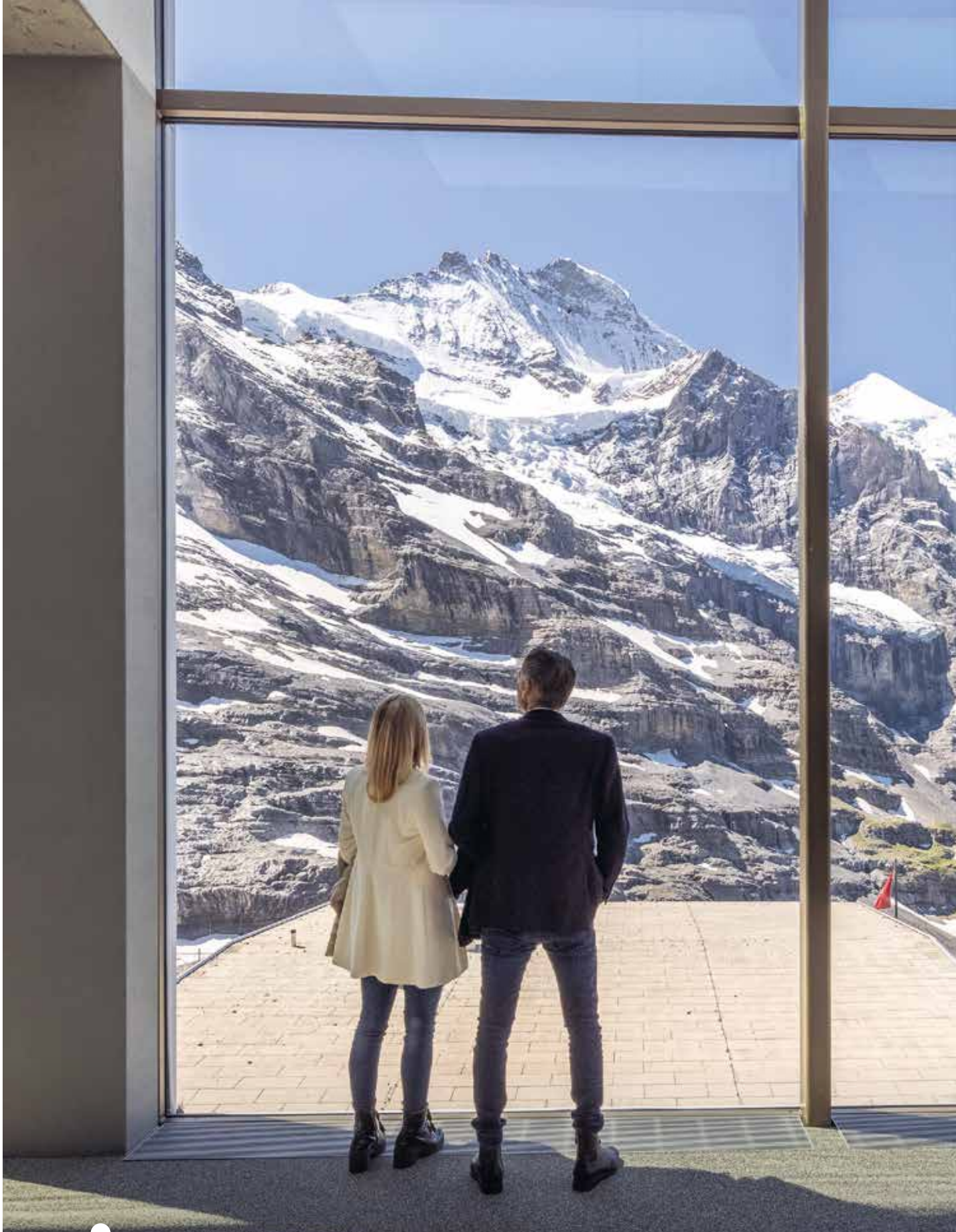
13 december 2019

Opening of a part of Grindelwald Terminal



5 december 2020
Start Eiger Express





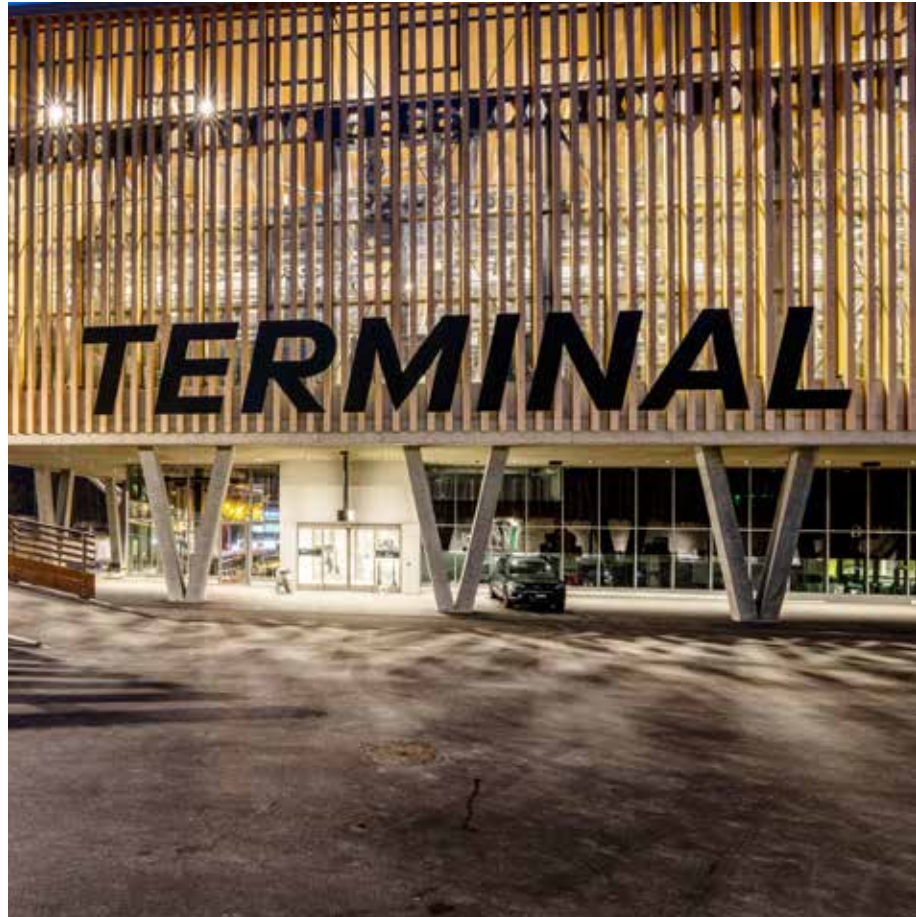
●
5 december 2020

Opening new Station Eigergletscher
(2 million visitors per year)



5 december 2020

Opening Grindelwald Terminal
(3 million visitors per year)



The V-Cableway secures the medium and long term successful future of tourism throughout the entire Jungfrau region as a top year-round destination in Swiss tourism. It strengthens the competitiveness of the Jungfraujoeh as a beacon known worldwide, and it helps the winter sports destination reach the top position in international competition.

The V-Cableway has a link to public transport with the new Berner Oberland-Bahn (BOB) railway station. Travel time to the Jungfraujoeh and the ski region is significantly shortened by 47 minutes. With eight integrated elements, the V-cableway project is a long-term project for the entire Jungfrau Region, pursuing the main objectives of quality and future.



Strategic objectives

- Creating prospects for the long-term: With investments, ensuring year-round operation and preserving the Grindelwald-Männlichen Gondola Cableway as well as the Wengernalp Railway.
- Increasing the competitiveness of the Jungfraujoch – Top of Europe with short travel time.
- Increasing attractiveness of winter sports destination with short loading times, exciting descents and connected ski areas.
- More time for shopping with no parking worries
- Grindelwald Terminal as the «one stop shop» in Switzerland
- Increasing comfort for guests staying in the area by breaking up traffic flow
- Promoting public transport with direct connections (Grindelwald terminal station)
- The entire region will be made more attractive. Holiday resorts will be boosted, in particular the hotel industry, other types of accommodation and local trade.
- Thanks to the reduced travel time, there is extra time available to spend in the region and for additional visits to nearby destinations: First, Schynige Platte, Harder Kulm.

Economic impacts

- The final report from Ecoplan shows that the V-Cableway project is of major economic significance for the Jungfrau region and for Grindelwald in particular. Very positive effects on employment and net product can be expected in both the construction and operation phases.
- In Grindelwald, between 182 and 592 jobs were secured or created. The net product effect is between 30 and 67 million francs.
- In the canton of Berne, between 342 and 776 new jobs have been created, with a net product of 53 to 105 million francs.
- In total, the project generates annual tax revenue of 11 to 14.6 million francs.

Time savings: Approx. 1 hour from anywhere in Switzerland


	before	V-cableway
Grindelwald – Jungfrauoch	1h 27'	40'
Interlaken – Jungfrauoch	2h 17'	1h 15'
Berne – Jungfrauoch	3h 18'	2h 15'
Berne – Eigergletscher	2h 36'	1h 35'
Berne – Eigergletscher (ski slope)	2h 36'	1h 35'
Zurich – Jungfrauoch	4h 20'	3h 15'
Zurich – Eigergletscher (Skipiste)	3h 38'	2h 40'
Berne – Männlichen (GGM)	2h 31'	1h 40'


Grindelwald Terminal

The most modern terminal in the Alps, with direct public transport connections, is the heart of the V-Cableway. This is where the world's most modern tricable gondola, the Eiger Express, starts its journey to the Eigerletscher and the 10-passenger gondola travels to the Männlichen.

Grindelwald Terminal highlights

- The one stop shop of Switzerland: The Terminal offers a shopping centre with Top Brands in various attractive shops.
- Two ski storage facilities are available in the terminal. The more than 500 cabinet systems have ventilation, heating, cloakroom hooks and LED lighting.
- If you arrive by car, there is a car park with 1,032 spaces.
- In the Platinum Lounge, VIP members have access to free drinks and snacks throughout the entire Eiger Express operating hours.
- The culinary offerings in the terminal include a bistro, a Noodle Soup Bar and for drinks and snacks the e-tron energy bar.

 943 MASL

 All year round





Eiger Express

The world's most modern tricable gondola, the Eiger Express, takes you from the terminal in Grindelwald to the Eigergletscher station in just 15 minutes. The ultra-modern cabins have 26 heated seats. With direct transfers, you can be at Jungfrauoch – Top of Europe 47 minutes faster and be comfortably on the ski slopes in 15 minutes.

- Modern 3S (tricable) gondola, capacity 2,200 persons per hour
- Shared terminal with Grindelwald-Männlichen Gondola Cableway bottom station at 943 meters above sea level
- Grindelwald Terminal – Eigergletscher journey time 15 minutes
- 44 gondolas, each with 26 seats
- Only 7 pylons
- Shared terminal Eigergletscher with Jungfrau Railway station at 2,320 meters above sea level, with direct connection to the Jungfrau Railway and the Jungfrauoch – Top of Europe and to the ski slopes



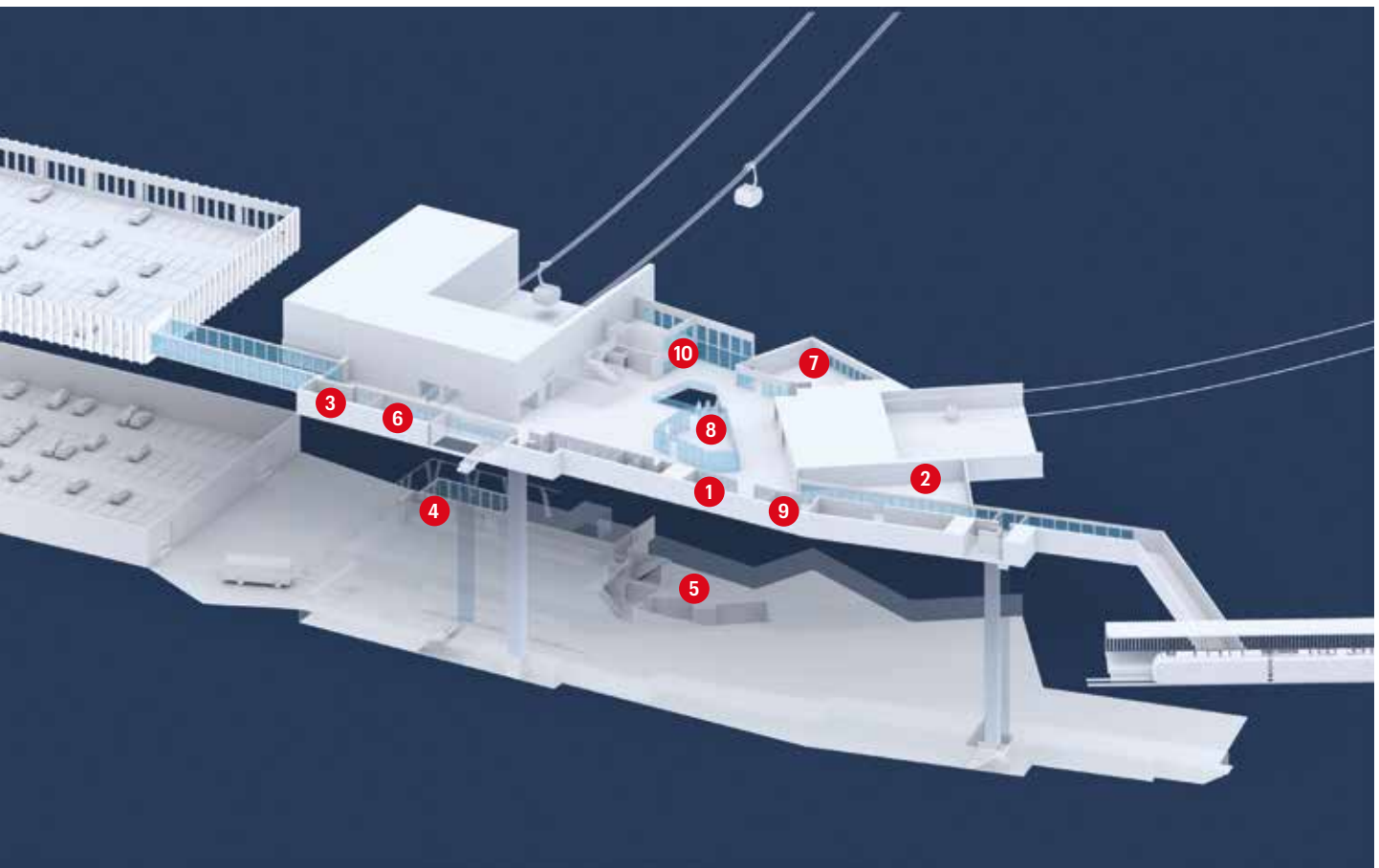


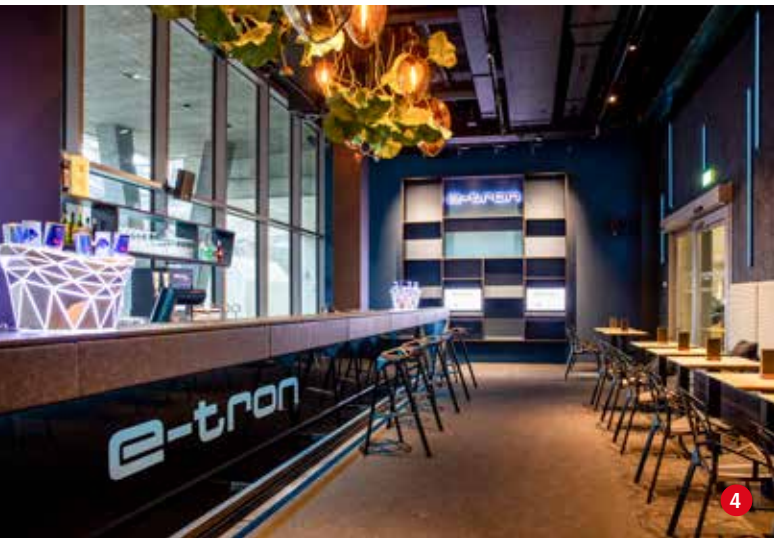
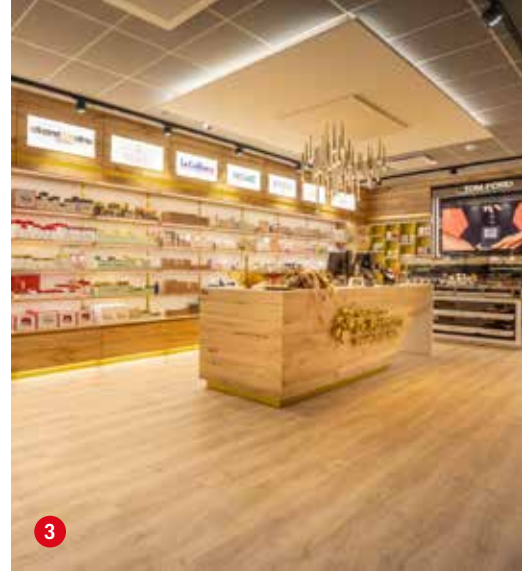
Shopping

Much more than a valley station: the terminal is also the new shopping centre in the region. International top brands and Swiss quality products leave no wish unfulfilled – from chocolate bars to exclusive premium watches.

Don't have your own skis? Forgotten your gloves? No problem, there's a sports shop for that. There you can rent all winter sports equipment from ski boots to helmets. Numerous ski storage units make it possible for you to store your equipment in the immediate vicinity of the lifts.

1	 BURI FASHION DESIGN	2	 coop	3	 Swiss Luxury Store Dr. Portmann Especially for your beauty	4	 e-tron energybar	5	 WINTERSPORT RENT-NETWORK
6	 Lindt MÄTRES CHOCOLATIÈRES SUISSES DEPUIS 1845	7	 KIRCHHOFER SWITZERLAND	8	 JUNGFRAU TOP OF EUROPE Top of Europe Shop	9	 JUNGFRAU TOP OF EUROPE Noodle Soup Bar	10	 JUNGFRAU TOP OF EUROPE Bistro







Eigergletscher station


Only 15 minutes from Grindelwald Terminal to Eigergletscher station. The Eiger Express summit station, starting point for the trip to the Jungfraujoch, the most breathtaking north face of the Alps within reach: this is the Eigergletscher station. It connects the hiking and ski area at the foot of the Eiger North Face with the fascinating world of ice and snow of the Jungfraujoch. If you want to get to the adventure and vantage platform Jungfraujoch – between Eiger, Mönch and Jungfrau – change here. If you are skiing or snowboarding in winter, you can take one of the many downhill routes here. And if you feel like hiking in the summer, you can choose between alpine hiking trails and gently sloping footpaths.


⚓ 2,320 MASL



Grindelwald-Männlichen Gondola Cableway

The rebuilding of what was once the longest passenger cable car in the world has enormous advantages, especially for winter sports enthusiasts: 111 gondolas double the transport capacity from 900 to 1,800 guests per hour. And you will get to the summit station faster too: the journey time has been cut from 30 to 19 minutes.

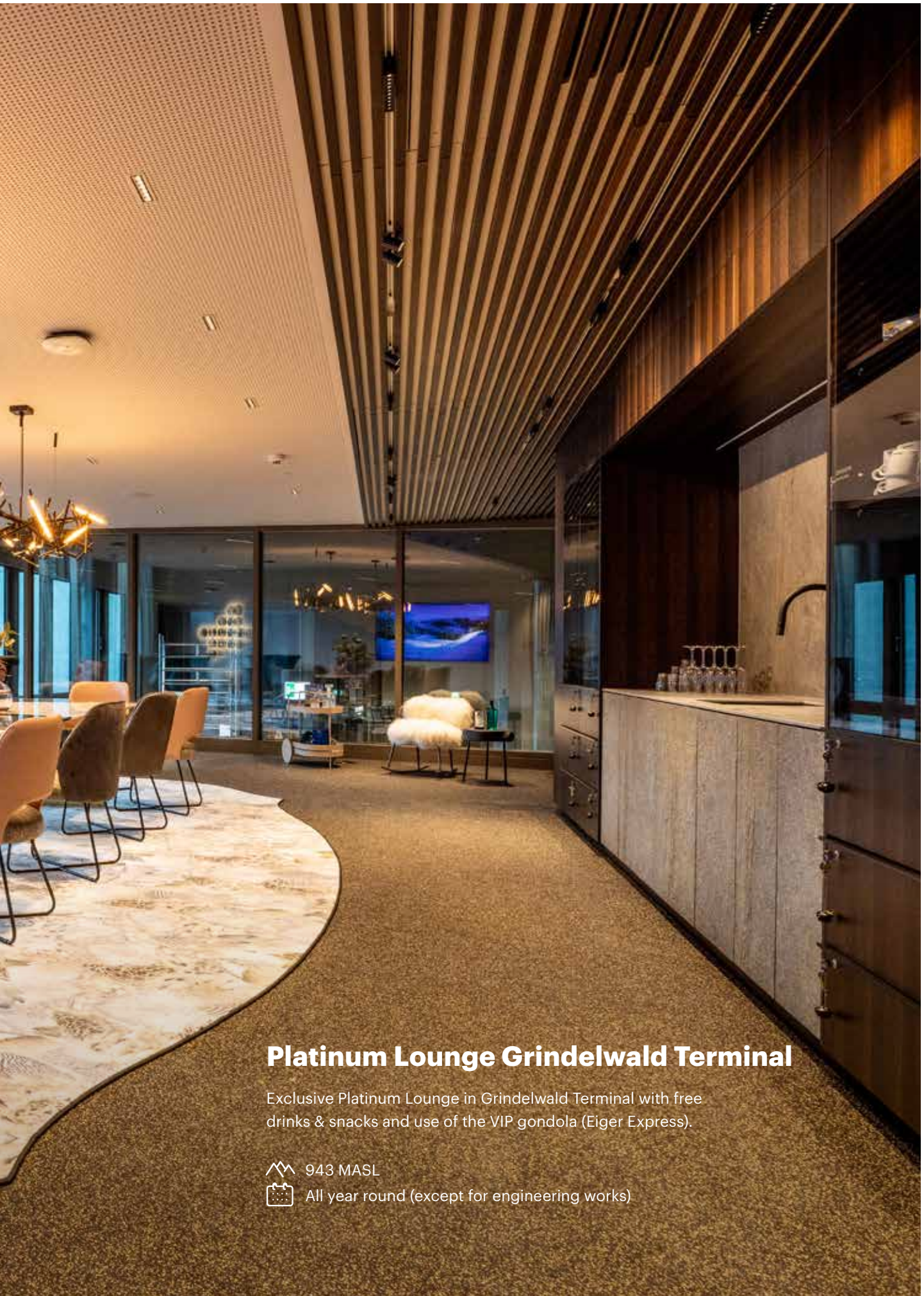
 2,320 MASL

 Mid-December until mid-April

Mid-May until the end of October







Platinum Lounge Grindelwald Terminal

Exclusive Platinum Lounge in Grindelwald Terminal with free drinks & snacks and use of the VIP gondola (Eiger Express).



943 MASL


All year round (except for engineering works)




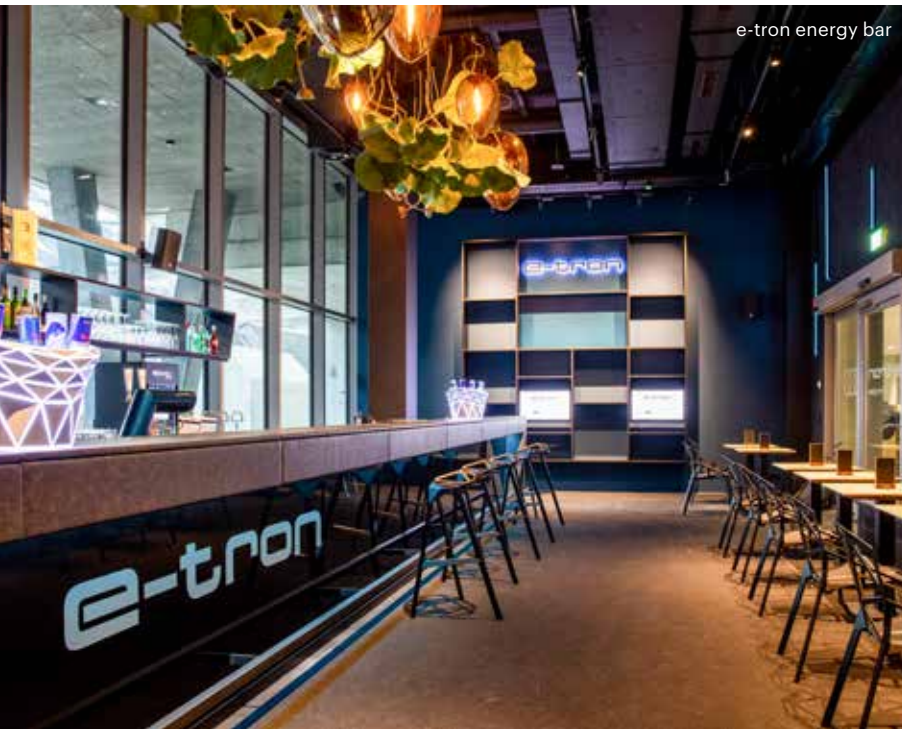


VIP gondola

Exclusive VIP gondola of the Eiger Express tricable gondola.

 943 MASL

 All year round (except for engineering works)



e-tron energy bar



Bistro Grindelwald Terminal



Noodle Soup Bar

Grindelwald Terminal gastronomy

An intensive creamy espresso in the Bistro Grindelwald Terminal, Asian noodle soup in the Noodle Soup Bar or a fancy cocktail in the e-tron energy bar are quick before you go up to the Eigergletscher and Jungfrau-joch with the Eiger Express tricable gondola.

🏔️ 943 MASL

📅 All year round

Railway Station


Grindelwald Terminal railway station is the starting point for getting to the Jungfrauoch or directly to the ski and hiking area at the foot of the Eiger North Face. The Eiger Express takes just 15 minutes from the Grindelwald terminal to the Eigergletscher station. This is 15 minutes on the most modern tricable gondola in the Alps with guaranteed Alpine experience of the finest quality.






Grindelwald Terminal car park

If you arrive by car, there is a car park with 1,032 spaces – as well as a parking guidance system with real-time info. Like the public transport links, the car park is directly connected to the terminal.

 943 MASL


 All year round




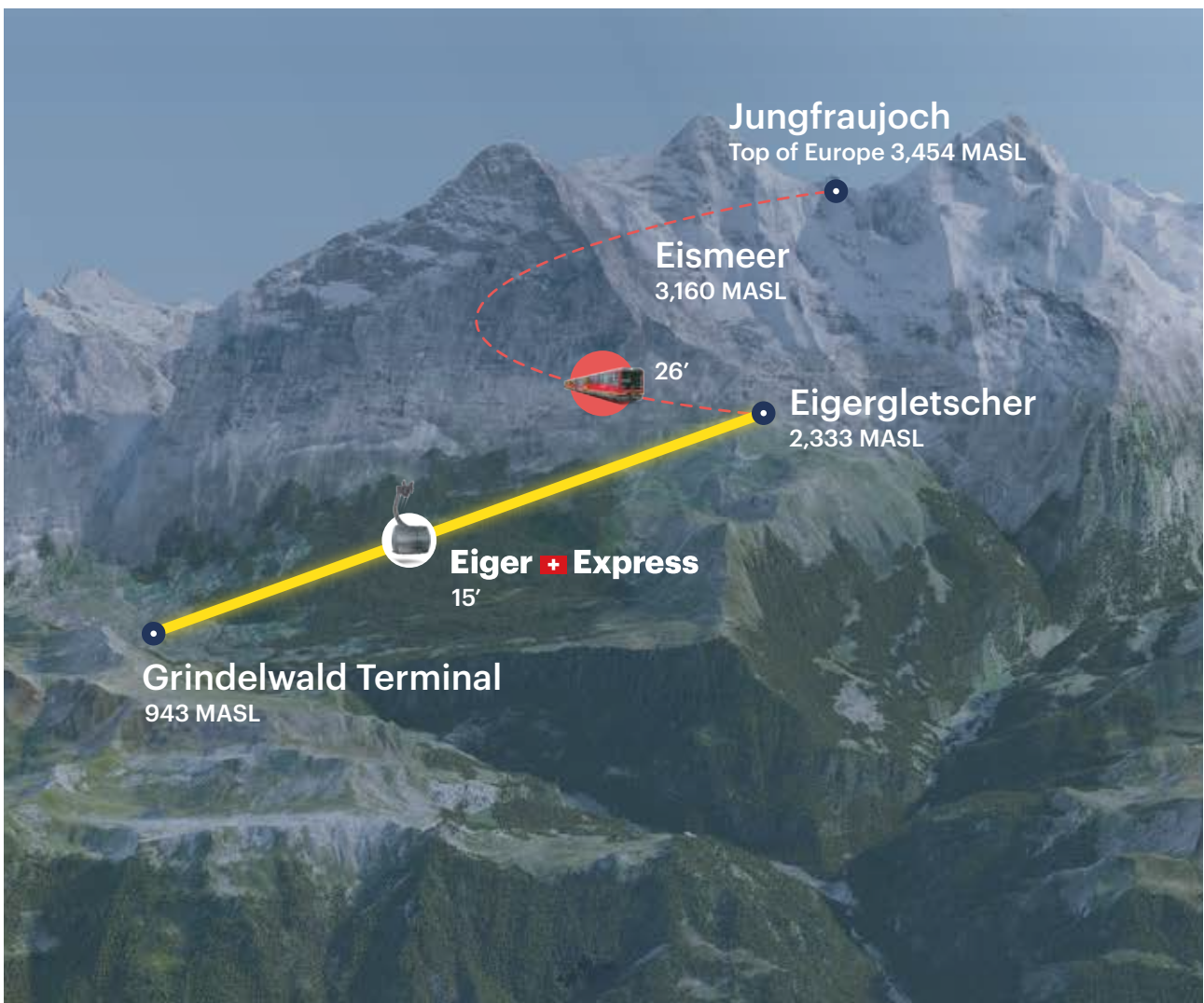


Grindelwald Terminal bus park

- 4 coach parking spaces for disembarking at Grindelwald Terminal, then the buses will park in the “Talgietli”.
- The pick-up point for the ski groups is Grindelwald Grund railway station. This means that the ski groups must take the downhill slope no. 22.
- There are free bus parking spaces directly behind Grindelwald Grund railway station.

 943 MASL

 All year round



Jungfraujoch – Top of Europe

The highlight of every trip to Europe

 **3,454 MASL**

 **365 days a year**

Welcome at 3,454 metres above sea level! A wealth of attractions awaits you on 365 days of the year. Experience the unique high-mountain landscape of the UNESCO World Heritage Swiss Alps Jungfrau-Aletsch and the views of the longest glacier in the Alps, the Aletsch glacier. Take a high-level mountain hike in the clear Alpine air or enjoy a virtual walk with exciting audio-visual entertainment, whatever the weather. Experience the enchantment of the fascinating world of ice and snow.



Jungfrau Railway

The Jungfrau Railway was opened in 1912, a pioneering work among mountain railways. The cogwheel railway transports guests from Kleine Scheidegg to the Jungfrau-joch – Top of Europe, located at 3,454 metres above sea level in a world of rock, ice and snow. The journey leads to the highest railway station in Europe. Of the nine-kilometre route, seven kilometres are in the tunnel, where the railway traverses the Eiger and Mönch mountains. At the Eismeer intermediate station, the trains stop for five minutes and visitors can admire the fascinating mountain world of rock, snow and ice through different viewing windows. The Jungfrau Railway climbs 1,400 metres. The trip takes 35 minutes from Kleine Scheidegg and only 25 minutes from Eigergletscher.



Sphinx vantage terrace

The Sphinx Observation Terrace offers you magnificent views of the Aletsch Glacier, as well as to-wards Italy, France and Germany. An ultra-fast twin elevator will whisk you up to the viewing deck which is 117 metres above the Jungfrau-joch – Top of Europe. The building on the Sphinx also houses a research station where scientists make valuable contributions to the study of the environment.



UNESCO World Heritage
Swiss Alps Jungfrau-Aletsch


Aletsch Glacier


Over 22 km in length and nearly one-kilometre-thick: The Great Aletsch Glacier is the most powerful ice stream in the Alps and the heart of the Swiss Alps Jungfrau-Aletsch UNESCO World Heritage Site. But this isn't a chance occurrence. An ice sheet of approx. 80 square kilometres stretches out in front of your eyes. In total, around twelve billion tonnes of ice lie here. The Jungfrauoch gives you an excellent vantage point from which to enjoy a spectacular view of this alpine wonder of snow and ice.



Mönchsloch Hut

The highest serviced hut in Switzerland can be reached from the Jungfrauoch in 45 minutes via a marked footpath. The path leads through the high alpine glacier world in the middle of the Swiss Alps Jungfrau-Aletsch UNESCO World Heritage.

 3,650 MASL


 Serviced from mid-March to mid-October





Snow Fun Park

Winter sports in summer – crazy, but possible. Whether you are hovering over glacial crevasses from a steel cable, zooming down the piste on skis or a snowboard, or gently gliding down through the sledge run on a sledge – you can enjoy a few hours in the Snow Fun Park in the permanent snow.

 June to mid-October



A 360° cinematic experience

Sometimes on the Jungfrauoch you can't see the mountains for the clouds. However, this has nothing to do with bad weather – quite the opposite. Clouds are fascinating. Who has not dreamed of plunging into this soft cotton-like wonder? The Jungfrau panorama film makes it possible. It provides a 360-degree panorama

of the mountain world that you could never see otherwise – 365 days a year. Visitors race with the camera through clouds, sink into ice crevices or fall into heaps of snow. And this is regardless of what the weather is doing right now.



Ice Palace

Magical sculptures carved from crystal-clear ice line the tour through this man-made glacier tunnel. In the 1930s, mountain guides created these passageways using picks and saws in the very middle of the Jungfrau-firn. Today, artists employ their dexterity and skill to sculpt the ice. Discover their works of art along a glass-like walkway: the realism of the eagle, penguin and bear makes them appear to have been transformed into ice only a moment ago.





Glacier Plateau

The coolest photo spot in the Alps awaits you on the Jungfrauoch: Snow and ice are guaranteed 365 days a year on the plateau, the viewing platform on the Jungfrauoch. And heart-stopping views as well. On one side you will enjoy unobstructed views all the way into Germany and France. On the other side, the Aletsch Glacier stretches out, lined by imposing four-thousand-metre peaks. You won't find another place on earth with views that extend further.



Alpine Sensation

A gripping, multi-media journey through time from the pioneering era of the Jungfrau Railway awaits you on this tour. You will be welcomed by a giant snow globe in which Switzerland presents itself in a light-hearted, modest manner. After stepping onto a moving walkway, you will be shown the touristic development of the Alps as you pass alongside an 80-metre mural. The tour concludes with a homage to the construction workers and their super-human efforts.



Top of Europe Shops – Lindt Swiss Chocolate Heaven

Shopping and snacking above the clouds: Explore the world of chocolate, high-quality watches and original souvenirs. Small, affordable mementos of happiness at a lofty height await you in the Top of Europe Shop: Victorinox pocketknives, all kinds of clothing, watches and even hand-carved wooden figures. In Lindt's Swiss Chocolate Heaven, you'll be able to stock up on sweet delicacies from Switzerland's best-known master chocolatier. Simply heavenly!





Restaurants

Fresh mountain air makes you hungry and thirsty: But luckily our restaurants offer lots of foods and beverages that will slake your thirst and sate your appetite. The fascinating glacier scenery and high-Alpine ambience provide the ideal setting to enjoy all the Swiss cuisine classics in the à-la-carte Restaurant Crystal and in the self-service Restaurant Aletsch. Authentic Indian cuisine on the other hand is available in the Restaurant Bollywood. And when time is short, you can eat quickly, simply and without fuss in the Restaurant Speedy and at the bars.

Grindelwald-First – Top of Adventure



Here you will find adventure galore: Choose between the First Cliff Walk presented by Tissot, First Flyer, First Glider, Mountain Cart, Scooter Bike. Those in search of peace and quiet can walk to the idyllic lake Bachalpsee. Visitors will find a spectacular 15-minute round tour next to the summit station on First. Created from a rock walkway, a unique single-rope hanging bridge and a metal catwalk, it offers a spectacular vantage point at a lofty height, looking towards the Eiger. The tour is suitable for everyone and the metal gratings high above the abyss and the hanging bridge guarantee thrills galore.

 2,168 MASL

 Mid-May until the end of October


Mid-December until the end of March




Schynige Platte – Top of Swiss Tradition



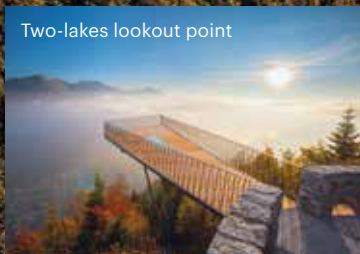
For over 125 years, a mountain brimming with tradition and diversity: picture-postcard vistas, enticing walking trails, daily alphorn concerts, a mountain hotel dating from the belle époque, freshly renovated, and the only botanical alpine garden with over 750 alpine flowers. Lily the Cow will already join younger visitors to the Schynige Platte on their train journey. The new booklet guarantees fascinating enjoyment during the train ride. Having arrived at the top, Lily awaits eagerly at the photo point to star in selfies and show young and old her home on the Schynige Platte.

 1,967 MASL

 End of May until the end of October



Harder Kulm – Top of Interlaken



Two-lakes lookout point and new panorama restaurant – easily reached by funicular in only 8 minutes from Interlaken. The vantage platform affords visitors unrivalled views of the Eiger, Mönch & Jungfrau as well as Lake Thun and Lake Brienz. On the large platform visitors can gaze down into depths through a glazed area in its centre. Thanks to daily evening trips, you can enjoy a spectacular sunset from the restaurant whilst savouring magnificent cuisine.

 1,322 MASL

 Mid-April until the end of November



Jungfrau Ski Region

Most beautiful and unique panorama in the world, with Eiger, Mönch and Jungfrau. Two valleys, three mountain ranges and 211 kilometres of perfectly prepared slopes. In the Jungfrau ski region snow fans can enjoy activities of all types and be in their element. The winter paradise with the backdrop of Eiger, Mönch and Jungfrau offers skiers and snowboarders everything their hearts desire: gentle slopes, steep drops, snow and fun parks, racing tracks and powder parties.

Grindelwald-Wengen

Kleine Scheidegg

Skiers and snowboarders enjoy the pleasures of the slopes in front of picture-perfect landscapes: The Eiger, Mönch and Jungfrau characterise the panorama of this ski area, which fulfils every wish. Sledging fans and winter walkers also find a wealth of variety in this stunning mountain landscape.

⚓ 2,061 MASL

Männlichen

The superbly scenic Männlichen lies between the Grindelwald and Lauterbrunnen valleys. An intricate network of slopes, lifts and cableways leads from there to the Lauberhorn, Switzerland's most famous mountain for skiing. The world-famous Lauberhorn-race piste leads directly down to the car-free village of Wengen.

⚓ 2,230 MASL





Grindelwald-First

Grindelwald-First

One of the Bernese Oberland's most varied winter-sports areas lies on the sunny slopes above Grindelwald. The network of slopes runs from an altitude of 2,500 metres to the valley. In terms of freestyle, First is one of Switzerland's top players. There are also several runs for sledging fans.

⚡ 2,168 MASL

Snowpark Grindelwald-First

The Snowpark Grindelwald-First is an Eldorado for snowboarders and freeskiers. The Snowpark Grindelwald-First has a 130-metre-long halfpipe and two parks of varying degrees of difficulty. Easier boxes in the beginners park and challenging tubes in the advanced park ensure unlimited freestyle fun.

Sales Representatives of Jungfrau Railways

Brazil · South America

Fernando Aquino · fernando.aquino@jungfrau.ch

India

Sony Abraham · sony@jungfrauindia.in

Japan

Minako Kaneko · minako.kaneko@jungfrau.ch

Korea

Jin Song · song@jungfrau.co.kr

North China

Albert An · albert.an@jungfrau.ch

South China

Cherry Zhang · 1226784742@qq.com

Taiwan · Singapore · Hong Kong

Wendy Ying · wendy.ying@jungfrau.tw

Thailand · South East Asia

Pen Tiyyarakul · pen.thamonwan@jungfrau.ch

All other countries

sales@jungfrau.ch

Jungfraubahnen Management AG

Harderstrasse 14
3800 Interlaken, Switzerland

info@jungfrau.ch
jungfrau.ch



JUNGFRAU

TOP OF EUROPE

Jungfrau Express

**DIRECT SBB TRAIN CONNECTIONS BETWEEN
ZÜRICH AIRPORT AND INTERLAKEN OST**



AS OF 11 DECEMBER 2022



Jungfrau Express

Every second hour, the direct connections will take guests conveniently from Zürich Airport to Interlaken Ost and back again.

TIMETABLE JUNGFRAU EXPRESS

Trains Zürich Airport from and to Interlaken West and Interlaken Ost
(as from 11.12.2022)

From Zürich Airport to INTERLAKEN OST

Zürich Airport dep.: 07.45 – Interlaken Ost arr. 09.58
Zürich Airport dep.: 10.45 – Interlaken Ost arr. 12.58
Zürich Airport dep.: 12.45 – Interlaken Ost arr. 14.58
Zürich Airport dep.: 14.45 – Interlaken Ost arr. 16.58
Zürich Airport dep.: 16.45 – Interlaken Ost arr. 18.58
Zürich Airport dep.: 18.45 – Interlaken Ost arr. 20.56

From INTERLAKEN OST to Zürich Airport

Interlaken Ost dep. 07.00 – Zürich Airport arr.: 09.14
Interlaken Ost dep. 09.00 – Zürich Airport arr.: 11.14
Interlaken Ost dep. 11.00 – Zürich Airport arr.: 13.14
Interlaken Ost dep. 14.00 – Zürich Airport arr.: 16.14
Interlaken Ost dep. 16.00 – Zürich Airport arr.: 18.14
Interlaken Ost dep. 18.00 – Zürich Airport arr.: 20.14
Interlaken Ost dep. 20.00 – Zürich Airport arr.: 22.14

Connections are still tentative and subject to changes.
Check timetable on www.rail.ch



EXCLUSIVE VIP OFFER JUNGFRAUJOCH – TOP OF EUROPE

The new **EIGER EXPRESS** tricable gondola will take you from Grindelwald Terminal to the Eiger Glacier station in just 15 minutes. With a direct transfer option, you will reach the **JUNGFRAUJOCH – TOP OF EUROPE** in only 45 minutes. Book now this very exclusive VIP offer. Enjoy a sparkling glass of champagne at the Platinum Lounge then board the exclusive VIP Eiger Express gondola. At the Jungfrauoch an exclusive visit to the Ice Bar will wait for you. A Jungfrau Railways tour guide will be with you during the entire journey.

PRICE IN CHF

- Valid: 1 day (offer valid for one pre-booked day)

2 PAX	3 PAX	4 PAX	5 PAX	6 PAX	7 PAX	8 PAX
2999.-	3449.-	3849.-	4199.-	4499.-	4749.-	4949.-

(net rate, no commission, no further discount)

GUESTS

From 2 up to max. 8 VIP guests

OUR SERVICES

- Access to the VIP Platinum Lounge at Grindelwald Terminal (free drinks & snacks)
- Use of the VIP gondola (Eiger Express) uphill only incl. 1 bottle of Champagne
- Tickets to Jungfrauoch – Top of Europe and back (Routing: Grindelwald Terminal – Eigergletscher – Jungfrauoch return)
- Ice Bar rent at the Top of Europe incl. aperitif (45 min.)
- Lunch at the Restaurant Crystal at Jungfrauoch – Top of Europe
- Fully guided by a professional Jungfrau Railways guide
- Free Parking at Grindelwald Terminal



Platinum Lounge



Ice Bar Jungfrauoch – Top of Europe



VIP Gondola

BOOKING

sales@jungfrau.ch

BOOKING CONDITIONS

Booking at least 14 days in advance

CANCELLATION FEE

A cancellation fee of CHF 1000.– (excl. VAT) will be charged for cancellation within 7 days before the date of travel.

JUNGFRAU
TOP OF EUROPE

Jungfrau Christmas Experience

SWISS CHRISTMAS JUNGFRAUJOCH – TOP OF EUROPE

EVERY YEAR
1 DECEMBER – 6 JANUARY



NEW

CHRISTMAS TREE WITH 200 CHRISTMAS COWS
TRAUFFER KUHgeln



+ FREE SOUVENIR METAL MAGNET



Welcome to Top of Europe

GRINDELWALD-FIRST – Top of Adventure
Take a seat in the cable car and let it take you up the local mountain of the famous mountain village of Grindelwald.

FROM GRINDELWALD TERMINAL IN 45 MINUTES TO THE JUNGFRAUJOCH – TOP OF EUROPE

JUNGFRAUJOCH – Top of Europe
Standing on the Jungfrauoch 3,454 m above sea level, you can feel it with your first step: this is a different world. It's one you have to experience.

GRINDELWALD TERMINAL
The most modern Terminal in the alps. The tricable gondola Eiger Express to the Eiger Glacier and the 10-person aerial gondola to Männlichen start here.

SCHYNIGE PLATTE – Top of Swiss Tradition
The nostalgic cogwheel railway was inaugurated in 1893 and takes visitors through a gorgeous mountain landscape with a unique view of the Eiger, Mönch and Jungfrau.

HARDER KULM – Top of Interlaken
A breathtaking view awaits on Interlaken's local mountain – a must – see for all visitors of the Jungfrau Region.

Spectacular Drone Flight

CRASH LANDING ON YOU
#jungfraujoch #cloy

VISIT THE CRASH LANDING ON YOU FILMING LOCATIONS

THE LOCATIONS OF JUNGFRAU RAILWAY ARE Jungfrauoch – Top of Europe, Eigerletscher, Kleine Scheidegg, Grindelwald-First

JUNGFRAU TRAVEL PASS 2023
Discover Jungfrau Region with maximum comfort and minimum price!

- CHF 145.– pp. for 3 days (discounted ticket with Swiss Travel Pass/ Half Fare Card)
- CHF 190.– pp. for 3 days (standard ticket)
- Available up to 8 days!
- Connecting ticket to Jungfrauoch CHF 61.– pp/CHF 74.– pp. (June/July/August)

GROUP OFFER 2023

- CHF 152.– Journey Grindelwald Terminal – Jungfrauoch – Grindelwald Terminal



Enjoy the Eiger Express as a VIP



Book this very exclusive VIP offer
jungfrau.ch/vip



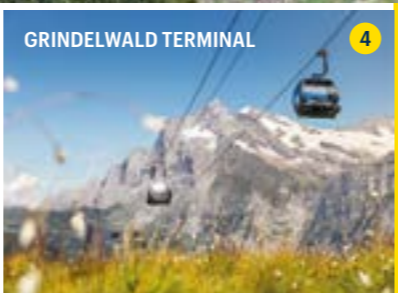
STATION GRINDELWALD TERMINAL 1
Bernese Oberland Railway, new public transport station with connecting passage to the terminal (Eiger Express & GGM)



GRINDELWALD TERMINAL 2
Shopping experience in the valley station Eiger Express and GGM



GRINDELWALD TERMINAL 3
Grindelwald Grund multi-storey car park



GRINDELWALD TERMINAL 4
Replacement of Grindelwald – Männlichen Gondola Cableway



Eiger Express 5
The most modern tricable gondola in the world



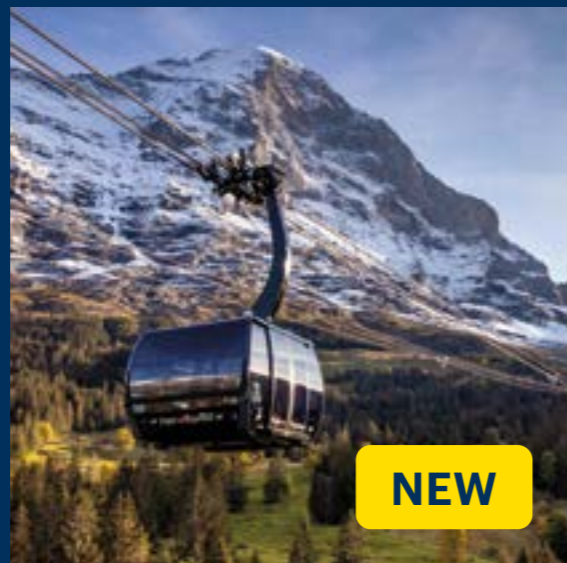
WENGERNALP RAILWAY 6
Rolling stock replacement



JUNGFRAU RAILWAY 7
Rolling stock replacement



GRINDELWALD-FIRST 8
New bus terminal with direct connection to the First cable car from the Grindelwald Terminal.



Jungfrauoch

TOP OF EUROPE · 3'454 MASL

OPEN 365 DAYS A YEAR

- Enjoy the Aletschglacier – Best place to discover snow and ice in Europe 365 days
- Sphinx – the best place in Europe to discover a world of eternal snow and ice
- Ice Palace – impressive ice sculptures 30m deep in the glacier
- Glacier plateau – Take a picture with the Swiss flag
- Lindt Swiss Chocolate Heaven & Top of Europe Shops
- Alpine Sensation – experience the origin story of Jungfrau in a magical setting
- Snow Fun Park – play with the snow, on ski, on sledges or a classic tyrolienne
- Restaurants & Drinks – all your F&B needs are covered!



Grindelwald Terminal

EIGER EXPRESS

47 MINUTES FASTER ON THE TOP OF EUROPE

- State-of-the-art cabins from Grindelwald Terminal to Eiger Glacier station
- Cabins with 26 seats each, 15 minutes ride and heated windows for perfect view at all times
- Shopping center with luxury brands, beauty products and watches
- 1000 parking slots
- Direct connection to public transport (Interlaken – Grindelwald line)



Grindelwald-First

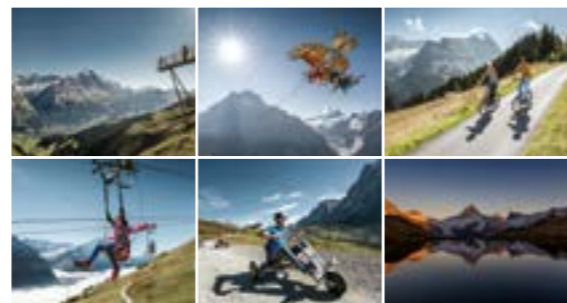
TOP OF ADVENTURE · 2'168 MASL

THE PURE ALPINE EXPERIENCE 10.12.2022 – 22.10.2023

- First Cliff Walk by Tissot: an unforgettable experience with panoramic view
- View point **NEW**
- Only 25 minutes from Grindelwald town to First mountain
- Top adventure activities for all: First Flyer, First Glider, Mountain Cart, Trottbike Scooter for an afternoon of fun
- Hike to the «Pearl of the Alps»: Lake Bachalp is less than 1 hour away

GROUP OFFER 2023 (10pax+)

- Round trip & lunch starting at CHF 61.– pp.



Harder Kulm

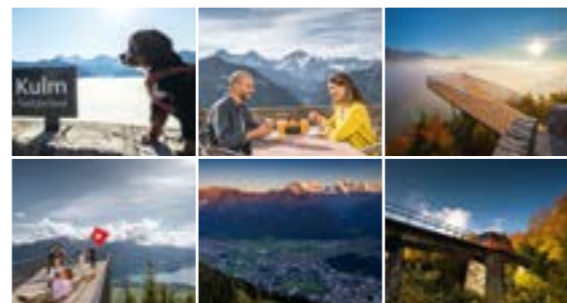
TOP OF INTERLAKEN · 1'322 MASL

FLY ABOVE CITIES, LAKES AND ADMIRE THE SNOWY MOUNTAINS TURNING RED IN THE EVENING 7.4.2023 – 26.11.2023

- Meet «Hardy» the Bernese Alpine Dog
- Cosy lunches or romantic dinners – up until 9.30 pm!
- 1 City: Interlaken, 2 Lakes: Lake Brienz & Lake Thun, 3 Mountains: Eiger, Mönch & Jungfrau
- Only 8 minutes from Interlaken to the top
- Perfect for seminars, events or meetings in the new, modern extension building.

GROUP OFFER 2023 (10pax+)

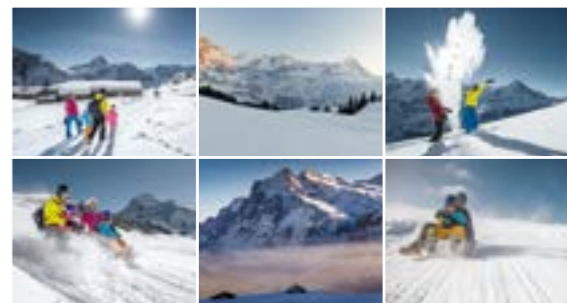
- Round trip & lunch starting at CHF 46.– pp.



Jungfrau Ski Region

GRINDELWALD · WENGEN

- Nothing you cannot do: skiing, snowboarding, Sledging, Winter hiking all easily accessible
- Special night sledging: Eiger Run by night
- 206 kilometres of perfectly prepared slopes
- Skiing in front of Eiger, Mönch and Jungfrau mountains: the best panorama in Switzerland



Selamat datang di Top of Europe

GRINDELWALD-FIRST - Top of Adventure
Pilih kursi di kereta gantung dan akan membawa Anda naik menuju desa Grindelwald yang terkenal diatas gunung

TERMINAL GRINDELWALD
47 MENIT LEBIH CEPAT MENUJU JUNGFRAUJOCH - TOP OF EUROPE

JUNGFRAUJOCH - Top of Europe
Berdiri diketinggian 3.454 m di atas permukaan laut di Jungfrauoch, Anda dapat merasakannya pada langkah pertama Anda: ini adalah dunia yang berbeda. Gunung ini adalah salah satu pengalaman yang harus Anda alami.

TERMINAL GRINDELWALD
Terminal paling modern di pegunungan Alpen. Gondola Eiger Express berteknologi 3 kabel menuju Eiger Glacier dan gondola berkapasitas 10 orang ke Männlichen berangkat dari sini.

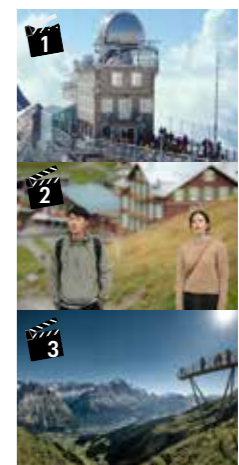
SCHYNIGE PLATTE - Top of Swiss Tradition
Rel kereta beroda gigi nostalgia ini diresmikan pada tahun 1893 dan membawa pengunjung melewati lanskap gunung yang indah dengan pemandangan Eiger, Mönch, dan Jungfrau yang unik.

HARDER KULM - Top of Interlaken
Pemandangan menakjubkan menanti di gunung Interlaken -wajib dilihat bagi semua pengunjung di wilayah Jungfrau.

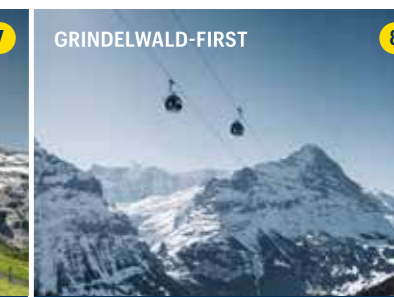
Spectacular Drone Flight

KUNJUNGI LOKASI SYUTING FILM CRASH LANDING ON YOU

LOKASI DARI REL KERETA JUNGFRAU ADALAH Jungfrauoch - Top of Europe, Eigergletscher, Kleine Scheidegg, Grindelwald-First



PENAWARAN GRUP 2023 (10 ORANG+)
· CHF 152.- per orang- Perjalanan Terminal Grindelwald - Jungfrauoch - Terminal Grindelwald



Pengalaman berbelanja di lembah stasiun Eiger Express dan GGM

Pergantian dari Rel Kabel Gondola Grindelwald - Männlichen

Nikmati Eiger Express sebagai VIP

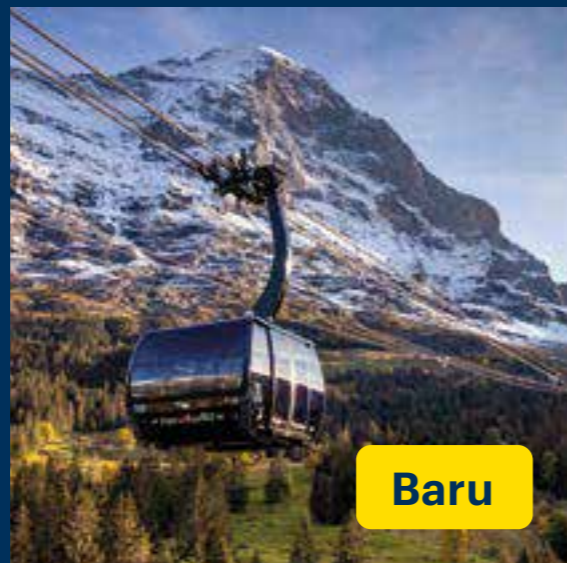
Pesan penawaran VIP yang sangat eksklusif ini melalui jungfrau.ch/vip

Gondola berteknologi 3 kabel paling modern di dunia

Kereta beroda gigi terkini

Kereta beroda gigi terkini

Terminal terbaru dengan sambungan langsung ke kereta gantung First dari Terminal Grindelwald.



Jungfrauoch

TOP OF EUROPE • 3'454 METER DIATAS

PERMUKAAN LAUT BUKA 365 HARI SELAMA SETAHUN

- Nikmati Aletschglacier – Tempat terbaik untuk menemukan salju dan es di Eropa selama 365 hari
- Sphinx – tempat terbaik di Eropa untuk menemukan dunia salju dan es abadi
- Ice Palace – Istana Es yang mengesankan di gletser dengan kedalaman 30 meter
- Glacier Plateau – Berfoto dengan bendera Swiss
- Toko Lindt Swiss Chocolate Heaven & Top of Europe
- Alpine Sensation – pengalaman asal-usul kisah Jungfrau dalam suasana magis
- Snow Fun Park – bermain dengan salju, bermain ski, dengan kereta luncur atau zipline klasik
- Restoran & Minuman – semua kebutuhan makanan dan minuman Anda terpenuhi!

Terminal Grindelwald

EIGER EXPRESS

47 MENIT LEBIH CEPAT MENUJU TOP OF EUROPE

- Kabin canggih dari Terminal Grindelwald ke stasiun Eiger Glacier
- Kabin dengan masing-masing 26 kursi, 15 menit perjalanan dengan jendela berpemanas untuk pemandangan sempurna setiap saat
- Pusat perbelanjaan dengan merek-merek mewah, produk kecantikan, dan jam tangan
- 1000 slot parkir
- Sambungan langsung ke transportasi umum (Jalur Interlaken – Grindelwald)

Periode pemeriksaan :
6 - 10.11.2023

Grindelwald-First

TOP OF ADVENTURE • 2'168 meter di atas permukaan laut

PENGALAMAN MURNI ALPEN

- First Cliff Walk oleh Tissot: pengalaman tak terlupakan dengan pemandangan panorama yang menakjubkan
- Titik Pandang **BARU**
- Hanya 25 menit dari kota Grindelwald ke Gunung First
- Kegiatan petualangan terbaik untuk semua pengunjung: First Flyer, First Glider, Mountain Cart, Trottbike Scooter untuk bersenang-senang di sore hari
- Mendaki ke «Pearl of the Alps»: Danau Bachalp berjarak kurang dari 1 jam

PENAWARAN GRUP 2023 (10 orang+)

- Perjalanan pulang pergi & makan siang mulai dari CHF 61.– per orang.

Periode pemeriksaan :
23.10 - 8.12.2023

Harder Kulm

TOP OF INTERLAKEN • 1'322 meter di atas permukaan laut

TERBANG DI ATAS KOTA, DANAU DAN KAGUMI GUNUNG SALJU YANG BERUBAH MENJADI WARNA MERAH DI MALAM HARI 4.7.2023 – 26.11.2023

- Temui «Hardy» si anjing Alpen Bernese
- Makan siang yang nyaman atau makan malam yang romantis – hingga pukul 21.30
- 1 Kota: Interlaken, 2 Danau: Danau Brienz & Danau Thun, 3 Pegunungan: Eiger, Mönch & Jungfrau
- Hanya 8 menit dari Interlaken ke puncak
- Sempurna untuk seminar, acara, atau pertemuan di gedung baru yang modern.!

PENAWARAN GRUP 2023 (10 orang+)

- Perjalanan pulang pergi & makan siang mulai dari CHF 46.– per orang.

Kawasan Ski Jungfrau

GRINDELWALD • WENGEN

- Tidak ada yang tidak dapat Anda lakukan: bermain ski, berseluncur salju, bermain kereta luncur, mendaki di musim dingin semuanya dapat diakses dengan mudah
- Kereta luncur malam khusus: Eiger Run di malam hari
- 206 kilometer lereng yang dipersiapkan dengan sempurna
- Bermain ski di depan pegunungan Eiger, Mönch, dan Jungfrau: panorama terbaik di Swiss

