

6 must-seen attractions

# HIGHLIGHT LAKE GENEVA REGION





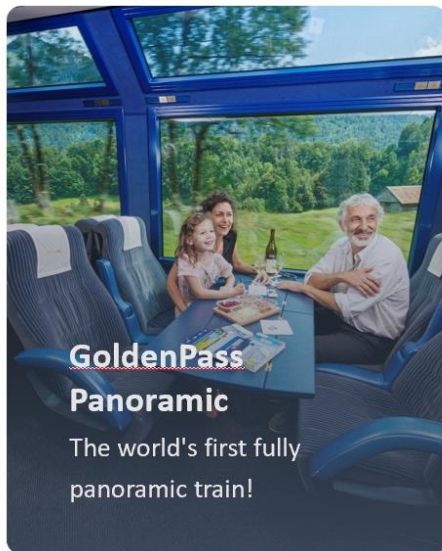
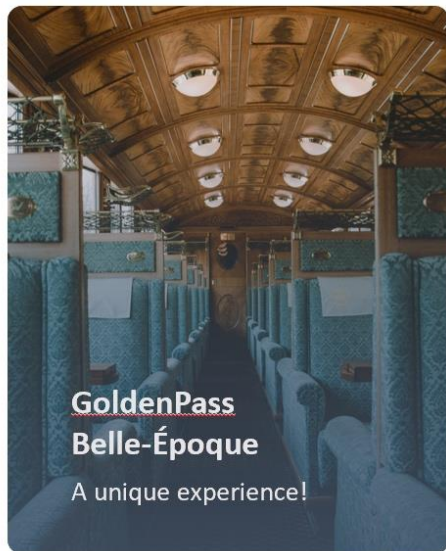
**MOB**

COMPAGNIE DU CHEMIN DE FER  
MONTREUX OBERLAND BERNOIS



# OUR PRODUCTS

SWISSPASS INCLUDED



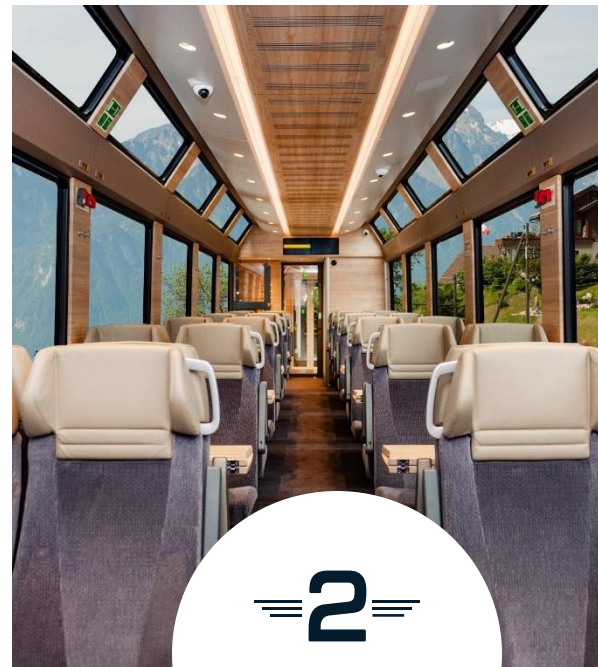
Montreux – Gstaad – Zweisimmen

Montreux – Gruyère  
Bus from Montbovon

Montreux – Gstaad –  
Interlaken  
From 11.12.2022

# GOLDEN PASS EXPRESS

MONTREUX - INTERLAKEN

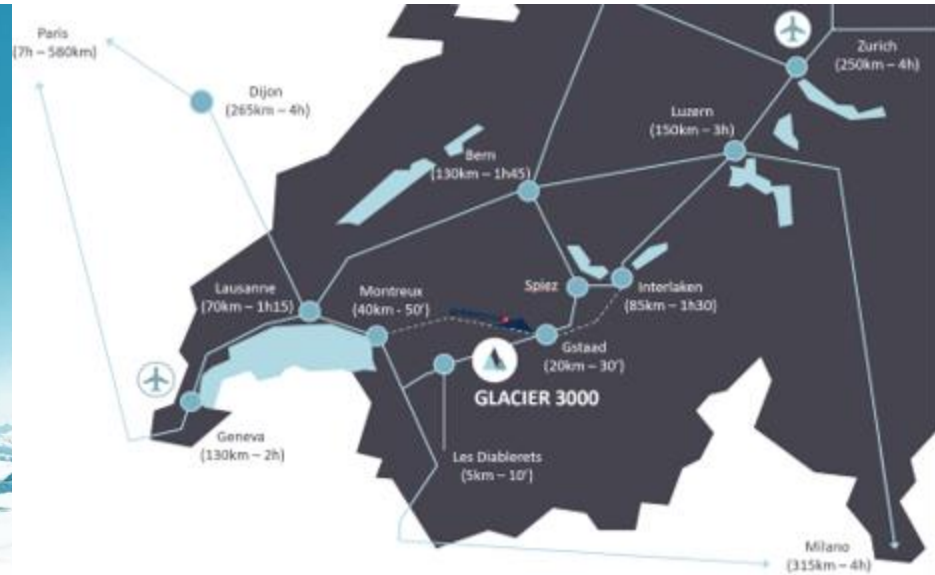
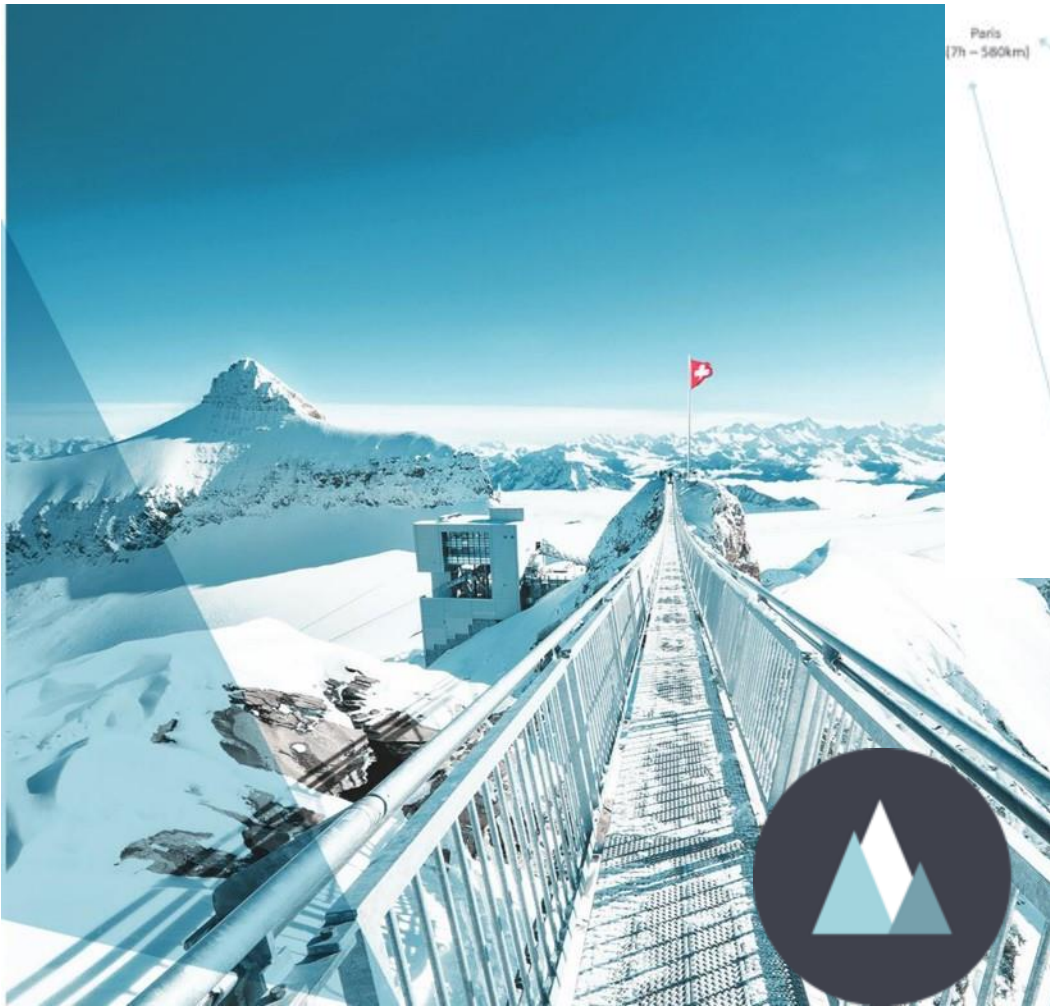




# NEWS



**The future Golden Pass Express 2022-2023**  
*Montreux - Gstaad - Interlaken*  
**From 11 December 2022**



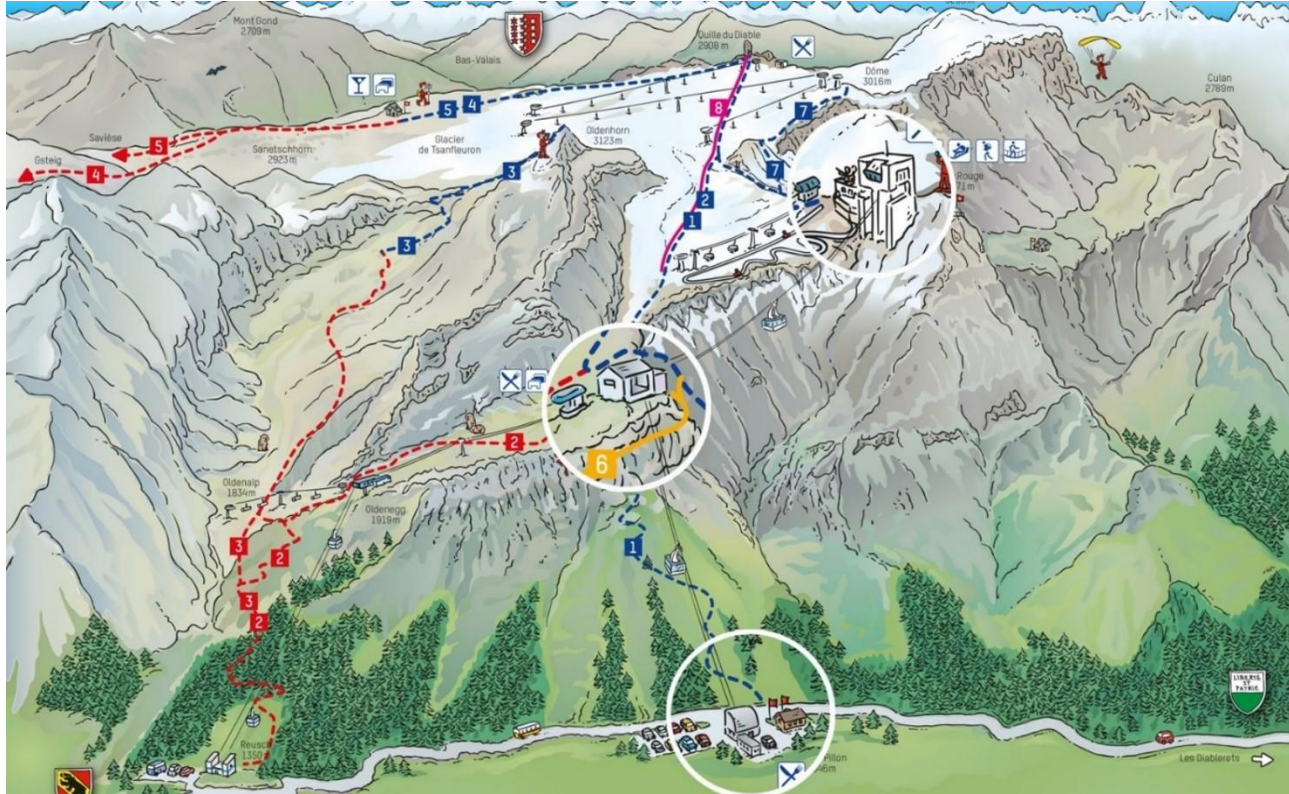
# GLACIER 3000

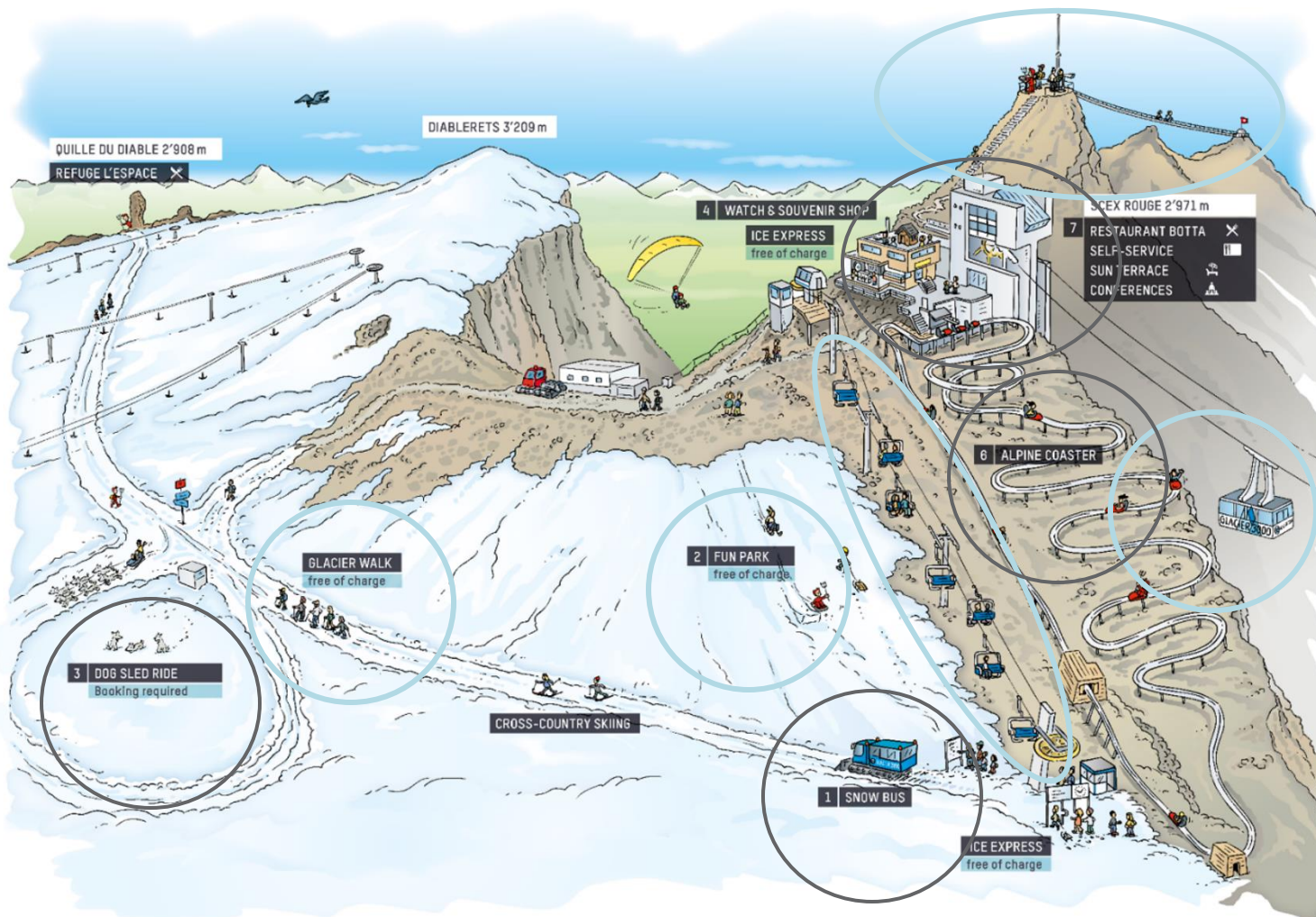


# TO GET TO THE TOP

15 minutes - 1 change - 125 persons

Rack Rate : CHF 85.- / -50% with Swiss Travel Pass / Group price from 10 persons onwards







The only PEAK TO PEAK suspension bridge  
in the world



JUNGFRAU



MATTERHORN



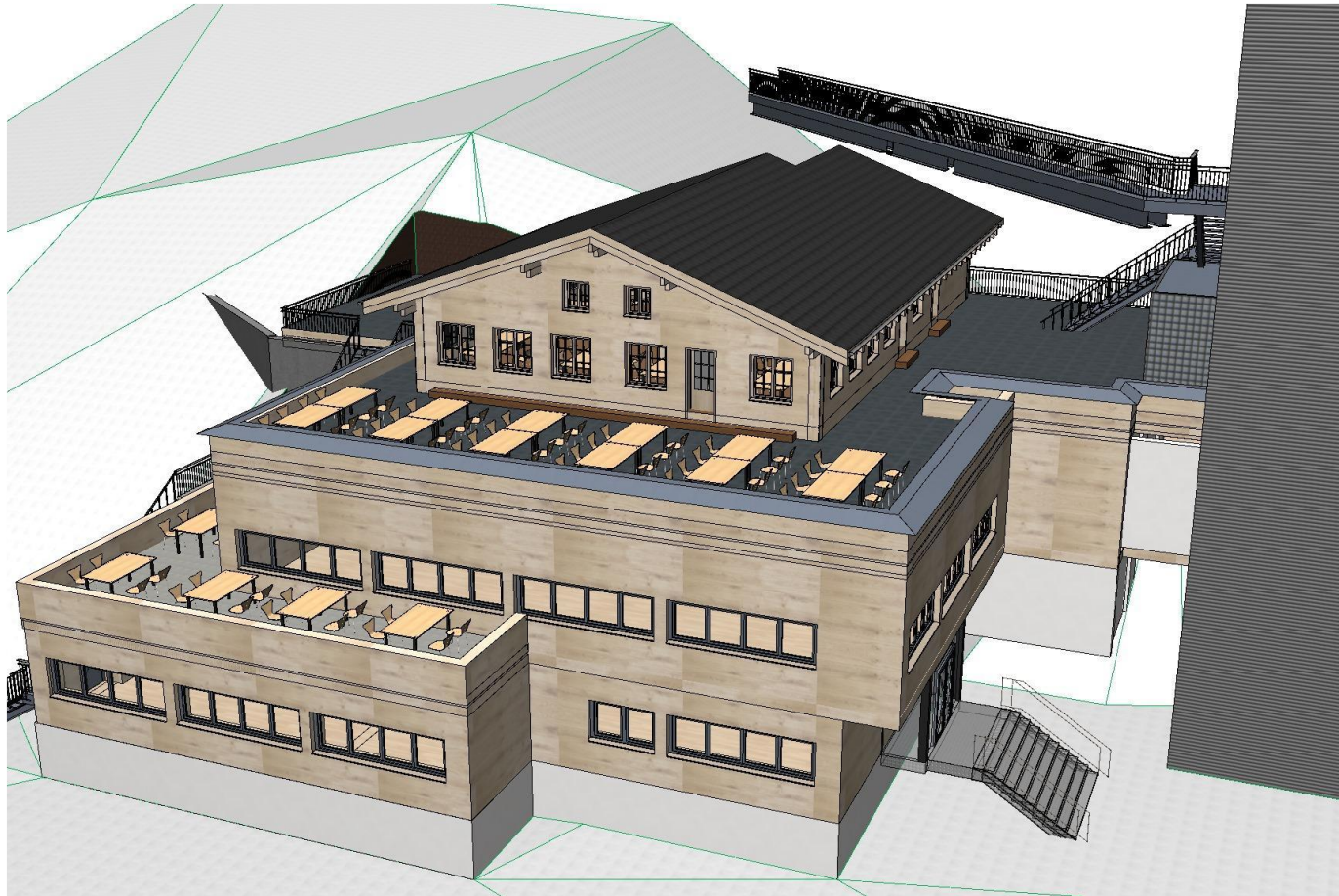
MONT-BLANC

# Restaurant Col du Pillon (200 seats)





# Provisory Restaurant









CGNI 



# Cruise offer 2023

## Lavaux Tour

Lausanne – Vevey – Lausanne

Available from April to October

- ✓ Up to 5 departures Lausanne Vevey and 7 Vevey Lausanne during the summer timetable
- ✓ 1 hour from Lausanne to Vevey (oneway) or 2 hour for return trip
- ✓ The most scenic part of Lake Geneva ( Lavaux – UNESCO)

Additional advantages

- ✓ Connection in Vevey to the Riviera Tour in Vevey
- ✓ Most cruises operated by historic Belle Epoque boats

## Heritage Tour

Lausanne – St Gingolph – Chillon – Montreux  
– Vevey – Lausanne

- ✓ Spring/Autumn: 14:40 – 18:08
- ✓ Summer: 09:30 – 12:33 / 12:40 – 15:40  
14:40 – 18:08 / 15:50 – 18:55

Additional advantages

- ✓ Most cruises operated by historic Belle Epoque boats
- ✓ Possible to make 1.5h trip from Lausanne to Chillon or vice versa



**WITH SWISS TRAVELPASS CUSTOMERS CAN  
TRAVEL FREE OF CHARGE ON ALL OUR BOATS**



# RIVIERA TOUR

## New departure times

|           |                            |
|-----------|----------------------------|
| Vevey:    | 10:10, 12:10, 14:10, 16:10 |
| Montreux: | 10:32, 12:45, 14:45, 16:45 |
| Chillon:  | 10:45, 13:00, 15:00, 17:00 |

## Same departure times from mid-April till mid-October 2022

No more changes of frequencies in spring summer and autumn.



## Connection with MOB GoldenPass train possible

- ✓ Departure Montreux by boat for 2 hour Riviera tour cruise on Belle Epoque boat «Italie» (Optional lunch)  
Connection on MOB Belle Epoque train to Gstaad Zweisimmen (optional lunch)  
Possibility to leave the train in Gstaad for a 1 hour walk in the village
- ✓ Departure Gstaad to Montreux and connection with Riviera Tour cruise on Belle Epoque boat then return from Montreux by train back to Gstaad.
- ✓ GPX-Train Interlaken – Montreux with connection on Riviera Tour cruise in Montreux.

## Connection in Vevey with Lavaux Tour cruise

Possibility to connect from Riviera Tour to Lavaux Tour with increased frequencies between Vevey Marché and Lausanne vice versa. However, we still have the 3-hour cruise from Lausanne to St Gingolph – Chillon – Montreux – Vevey – Lausanne offering a cruise without change from the Riviera to Lausanne (1 departure in spring and autumn, 4 departures in summer).

# Cruises in GENEVA

## Geneva Tour (1 hour commented sightseeing cruise)

✓ Spring /autumn: 14:30, 15:30, 16:30 daily + 10:30, 11:30, 13:30 Saturday and Sunday

✓ Summer : 10:30, 11:30, 13:30, 14:30, 15:30, 16:30 daily

Web App “CGN-Tours” with Online audioguide in English, French, German and Chinese available

## 2-hour cruise on paddle steamer in the afternoon

✓ 15:50 – 17h50 Geneva – Hermance – Geneva

✓ Daily in Summer, Saturday and Sunday in Spring and Autumn

## Geneva – Yvoire – Geneva

✓ Spring and Autumn: 2 per day from Monday to Friday / 3 per day on Saturday and Sunday

✓ Summer: 4 per day including lunch and dinner cruise





# Lunch & Dinner Cruises

## Lunch cruise from Lausanne

From mid April to mid October 2023

Daily: 12:30 – 14:25 Lausanne – Vevey – Lausanne (2h) in Spring and Autumn

Daily: 12:40 – 15:40 Lausanne – Chillon – Lausanne (3h)

## Lunch cruise from Vevey, Montreux, Chillon

Daily from mid April to mid October 2023

✓ 12:10 – 14.05 from Vevey

✓ 12:45 – 14:45 from Montreux

✓ 10:45 – 13:00 or 13:00 – 15:00 from Chillon

## Lunch cruise from Geneva (Jardin-Anglais pier)

Daily in Spring and Autumn 2023

✓ 12:35 – 14:15 Monday to Friday      12:35 – 15:20 Saturday and Sunday

Daily in Summer 2023

✓ 12:35 – 15:20

## Dinner cruise from Lausanne

Daily in June July August and September 2023: 18:15 – 20:35 Lausanne – Vevey – Montreux – Lausanne

## Dinner cruise from Geneva (Jardin-Anglais pier)

Daily in June July August and September 2023: 19:00 – 22:20 Geneva – Yvoire – Geneva

Details of the daily special, 3 course menu or à la carte available on our website: [www.cgn.ch/en](http://www.cgn.ch/en)

Please request the special group menus (> 10 pax) of our catering partner Café Léman [groupe@cgn.ch](mailto:groupe@cgn.ch)



# Lausanne – Evian

## Practical information

- ✓ Up to 15 departures per day in each direction.
- ✓ Duration 35 minutes per way
- ✓ Operating daily all year round 365 7/7
- ✓ Allows a Half day excursion from Lausanne to Evian.
- ✓ As from June 2023 operating with a brand new hybrid boat







CHILLON



SITE CULTUREL  
SUISSE

## A MUST-SEE

**A thousand-year-old historical monument situated in an exceptional natural setting between the Lake Geneva and the Alps.**





# PLAN YOUR VISIT EASILY



## OPENING TIMES

**January to March:** 10am to 5pm (last entry at 4pm)

**April to October:** 9am to 6pm (last entry at 5pm)

**November to December:** 10am to 5pm (last entry at 4pm)



## FACILITIES ON SITE

**Parking:** large parking, also for coaches (5' walk)

**Shop:** souvenirs, postcards, chocolate...

**Food:**

- ✓ Rest area with automatic beverage distributors inside the castle
- ✓ Snackbar and picnic area in the garden
- ✓ Café Byron outside the castle



## HIGHLIGHTS

- ✓ Impressive undergrounds with prisons
- ✓ Amazing viewpoints from the towers and the keep
- ✓ Great halls and rooms with beautiful restored furniture, mural paintings and weapons from Middle Ages
- ✓ Beautiful courtyards



# GUIDED TOUR + WINE TASTING



## CLOS DE CHILLON

Part of the «Lavaux» appellation, Chillon Castle owns 12'500 m2 vineyard spread blissfully along the shores of Lake Geneva and produces its own wine.



## 2 OFFERS IN 1

Castle visit + Castle's Wine tasting



LE  
MUSÉE  
OLYMPIQUE

# PLAN YOUR VISIT EASILY



## OPENING TIMES

Open from 9 a.m. to 6 p.m

All year round (Tuesday to Sunday)

Closed on Mondays (except bank holidays, and on 24, 25, 31 December and 1 January.)

## PERMANENT EXHIBITION

- ✓ Olympic symbols (torches / medals)
- ✓ Origin of the games
- ✓ Evolution of sporting competition
- ✓ Athletes' stories
- ✓ Embody the Olympic Spirit





## THE PARK

- ✓ More than 40 sculptures and sport installations
- ✓ 8'000m<sup>2</sup> of park area
- ✓ 97 steps

## TOM SHOP

- ✓ Official IOC store
- ✓ Buysouvenir



## TOM Café

- ✓ Open from 9am to 6pm, closed on Mondays
- ✓ Panoramic view on the lake and the alps

## SEMINARS & CORPORATES EVENTS

Please contact our team [events.museum@olympic.org](mailto:events.museum@olympic.org)

# RATES FOR TOURISM SECTOR PROFESSIONALS

| ENTRY                      | ONLINE TICKET PURCHASE | ON-SITE TICKET PURCHASE |
|----------------------------|------------------------|-------------------------|
| Adults (aged 16+)          | CHF 10                 | CHF 20                  |
| Adults (10 people or more) | CHF 10                 | CHF 14                  |
| Children (aged 0 to 15)    | FREE                   | FREE                    |
| Driver and tour guide      | FREE                   | FREE                    |
| Audioguide*                | FREE                   | FREE                    |

\* Available in 9 languages, subject to stock availability: French, English, German, Spanish, Italian, Arabic, Chinese, Japanese and Russian.

## ONLINE TICKETING FOR TOURISM SECTOR PROFESSIONALS

You are invited to create an account for your organisation on our ticketing site for tourism sector professionals. Once your account has been validated, you can buy tickets for your clients directly online.

### Benefits:

- Special rate from the first ticket purchased
- Direct access to the exhibitions
- Quick, simple and centralised booking process



Online Ticketing Website

## TO EXTEND YOUR VISIT

Ticket price CHF 10.-

- + Guided tours : CHF 180 (25 pax max, 90', 11 languages)
- + Coffee break : CHF 12
- + Aperitif : CHF 18
- + Weekday lunch : CHF 40
- + Weekend brunch : CHF 55
- + Picnic : CHF 20
- + Gift : catalogue on request

Advance booking required: [events.museum@olympic.org](mailto:events.museum@olympic.org)

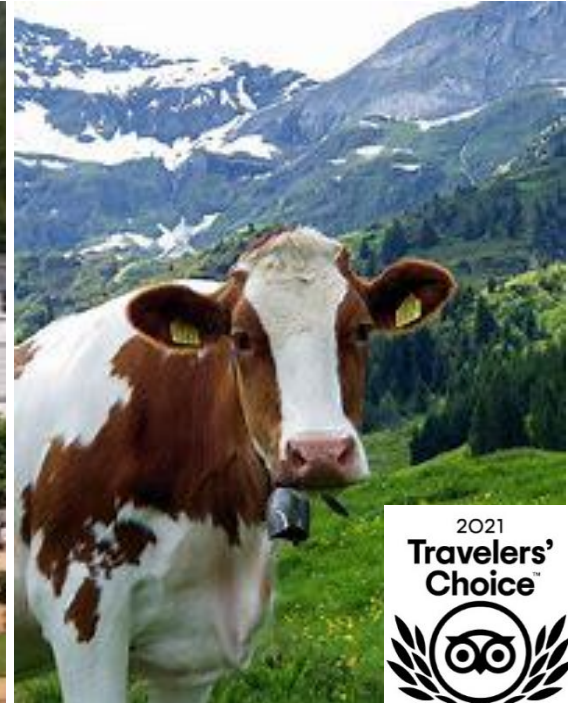


Cailler®



# MAISON CAILLER

The most entertaining, educational and authentic **Swiss chocolate experiences** for the whole family and friends.



# YOUR VISIT



**History** of cocoa & **tradition** of Cailler in an immersive multimedia show



**Authenticity** by experiencing ingredients & real production with all senses



**Emotion** generated by a generous tasting to become part of the Cailler family

# A MUST-DO

The Workshop "Atelier du chocolat"

A variety of courses for all ages with professional chocolatiers







## CHOCOLATE EXPERIENCE

- ✓ **Cailler boutique**: complete Cailler assortment including artisanal chocolate & factory outlet
- ✓ **One-hour family fun walk** around the Cailler factory
- ✓ **Escape game** to take on the "chocolate" challenge in an authentic period wagon
- ✓ **The Café** to enjoy our famous hot chocolate, a range of hot and cold beverages, light snacks, and desserts created by our chocolatiers

# THANK YOU!

Contact us : [info@hlgr.ch](mailto:info@hlgr.ch)

Website : [www.hlgr.ch](http://www.hlgr.ch)

