

LUZERN+
ГЛСЕВНЕ
THE CITY. THE LAKE. THE MOUNTAINS.



Premium Business Events Lucerne – Lake Lucerne

Lucerne - Lake Lucerne Region



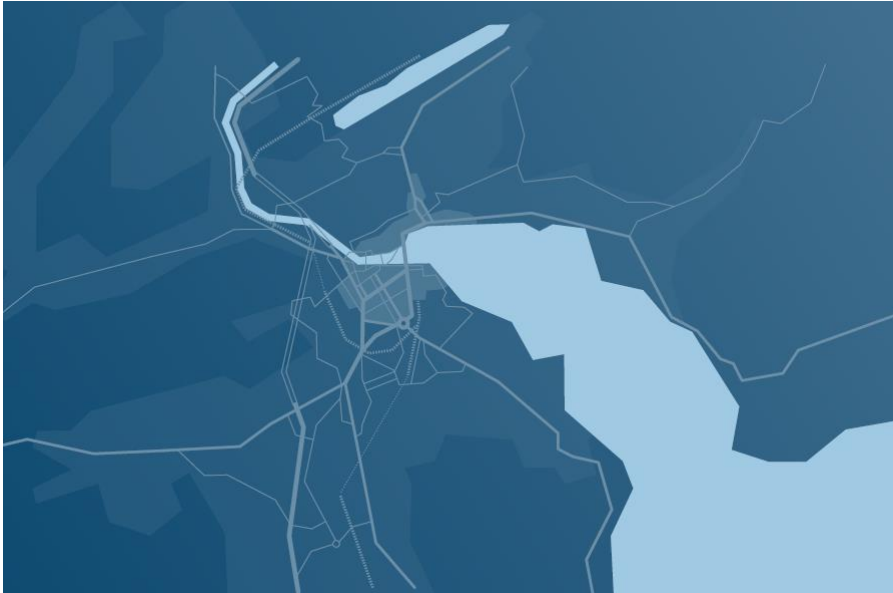
In the heart of Switzerland

Transport link

Easy to reach by train (every half-hour from Zurich, Berne, etc.), by air (approx. 1 hour travel from Zurich or Basel Airport), by ship and by car (A2 / A4 motorway).



City of Lucerne



- Population Lucerne: 81'592
- Population Canton Lucerne: 406'506
- Language: German
- Currency: Swiss Franc (CHF)
- VAT: 3.7 % / 7.7 %
- For hotel guests: inclusiv public transport ticket and free WiFi in the city









The Lucerne – Lake Lucerne region



- 5 different cantons
(Luzern, Uri, Schwyz, Obwalden,
Nidwalden)
- Population total: 680'650
- Well-linked public transport system
- Ideal combination of business and
leisure









Hotel capacities

Hotels City of Lucerne

Category	Number of hotels	Rooms	Beds
5*	5	396	774
4*	15	1'448	2'639
3*	13	684	1'344
Other	25	779	1'650
Total	58	3'307	6'407

Hotels Lake Lucerne Region

Category	Number of hotels	Rooms	Beds
Total	382	9'602	25'000

Capacities Conferencing Venues

Name	No. of rooms	Theatre	Seminar	Banquet
KKL	9	1'840	450	850
Museum of Transport	14	600	252	360
Exhibition Center	9	5'000	4'000	4'000

Lucerne Convention Bureau



Team



Sergio Roth
Head of Lucerne Convention Bureau
+41 (0)41 227 17 10
sergio.roth@luzern.com



Isaline Grichting
Manager Sales & Marketing Association
+41 (0)41 227 17 47
isaline.grichting@luzern.com



Ursina Hess
Manager Sales & Marketing (MICE)
+41 (0)41 227 17 87
ursina.hess@luzern.com



Abel Morais
Manager Sales & Marketing (MICE)
+41 (0)41 227 17 43
abel.morais@luzern.com



Tiffany Peter
Assistant Sales & Marketing (MICE)
+41 (0)41 227 17 42
tiffany.peter@luzern.com

Services LCB

The LCB is the meeting and conference arm of Lucerne Tourism. Services provided by the LCB are free of charge – even hotel enquiries incur no commission.

Main services LCB

- Advice and ideas on planning your event
- Forwarding of information and documentation material to organising committee for participants
- Support, organisation and escort with/of site inspections
- Submission of quotations for room allotments and meeting spaces for small events
- Support with bid documents

New projects



Kempinski Palace Engelberg*****

Titlis Swiss Alps

- Opening spring/summer 2021
- 129 rooms
- Integrated conference centre for up to 460 people
- Located in the heart of the town



Refurbishment Hotel Palace Luzern*****S



- Reopening 2022
- 145 rooms
- 7 conference rooms
- Up to 350 pax
- Only 5* superior hotel in the city

MS Diamant

- Newest boat on Lake Lucerne
- 20 boats in total
- First climate neutral ship in Switzerland
- Max. capacity of 1'000 people



MS Diamant



- Banquet for up to 400 people
- Open gallery
- Cruise ship feeling
- Large outdoor spaces

Radisson Blu Hotel Reussen, Andermatt****S



- Rooms 244
- Beds 280
- Conference rooms 7
- Max. cap. theatere 700



Bürgenstock Resort

- 4 Hotels / 382 rooms total
- 31 Conference rooms:

Theatre	600
Seminar	500
Banquet	450
- Biggest Spa in Central Europe
- Direct connection from Lucerne by boat



Hotels in the City of Lucerne



Grand Hotel National*****



- Rooms 41
- Beds 82
- Conference rooms 7
- Max. cap. theatre 150



Hotel Schweizerhof Lucerne****



■ Rooms	101
■ Beds	196
■ Conference rooms	9
■ Max. cap. theatre	380

Art Deco Hotel Montana****S



- Rooms 61
- Beds 116
- Conference rooms 7
- Max. cap. theatre 130



Palace Hotel & Conferences****S

Bürgenstock Resort



- Rooms 108
- Beds 216
- Conference rooms 31
- Max. cap. theatre 600

Radisson Blu Hotel, Lucerne****s



■ Rooms	189
■ Beds	282
■ Conference rooms	14
■ Max. cap. theatre	250



Seehotel Hermitage****s



- Rooms 69
- Beds 138
- Conference rooms 5
- Max. cap. theatre 120

Ameron Luzern Hotel Flora****



■ Rooms	161
■ Beds	287
■ Conference rooms	4
■ Max. cap. theatre	160

Hotel Continental Park****



- Rooms 92
- Beds 170
- Conference rooms 13
- Max. cap. theatre 240



Hotel Waldstätterhof***S



- Rooms 96
- Beds 165
- Conference rooms 7
- Max. cap. theatre 50

Pilatus Kulm Hotels***S/***



- Rooms 50
- Beds 100
- Conference rooms 7
- Max. cap. theatre 160



Hotels in the Lake Lucerne Region



Frutt Lodge & Spa****S



- Rooms 114
- Beds 228
- Conference rooms 5
- Max. cap. theatre 100

Radisson Blu Hotel Reussen, Andermatt****S



- Rooms 244
- Beds 280
- Conference rooms 7
- Max. cap. theatre 700



Campus Hotel Hertenstein****



- Rooms 62
- Beds 118
- Conference rooms 12
- Max. cap. theatre 200

Hotel Vitznauerhof****



- Rooms 53
- Beds 93
- Conference rooms 8
- Max. cap. theatre 121



Seehotel Waldstätterhof****



■ Rooms	106
■ Beds	160
■ Conference rooms	20
■ Max. cap. theatre	360

Seehotel Wilerbad****



- Rooms 61
- Beds 104
- Conference rooms 14
- Max. cap. theatre 180



Hotel Rigi Kaltbad***S



■ Rooms	52
■ Beds	119
■ Conference rooms	6
■ Max. cap. theatre	150

Jugendstil-Hotel Paxmontana***S



- Rooms 116
- Beds 219
- Conference rooms 8
- Max. cap. theatre 200



Campus Sursee Seminarzentrum***



■ Rooms	550
■ Beds	860
■ Conference rooms	66
■ Max. cap. theatre	500

See- und Seminarhotel FloraAlpina***



- Rooms 56
- Beds 125
- Conference rooms 7
- Max. cap. theatre 140



Event venues in Lucerne



KKL Luzern



- Number of rooms 9
- Theatre 1'840
- Seminar 470
- Banquet 800

Messe Luzern



- Number of rooms 7
- Theatre 5'000
- Seminar 4'000
- Banquet 4'000

Verkehrshaus Conference Center



- Number of rooms 12
- Theatre 600
- Seminar 250
- Banquet 330



Grand Casino Luzern



- Number of rooms 3
- Theatre 500
- Seminar 250
- Banquet 330

Lake Lucerne Navigation Company



- No. of boats 20
- Banquet 400
- Seminar on request
- Theatre on request

Swissporarena



- Number of rooms 12
- Theatre 300
- Seminar 48
- Banquet 600

D4 Business Village Luzern



- Number of rooms 16
- Theatre 170
- Seminar 86
- Banquet -



Eiszentrum Luzern



- Number of rooms 3
- Theatre 3'700
- Seminar 2'500
- Banquet 1'300



Meeting & Incentive Engelberg



Engelberg

- Largest winter and summer holiday destination in Central Switzerland
- 50min from Lucerne
- Direct train connections from Lucerne & easily accesible by car
- Glacier Mt. Titlis



Hotels in Engelberg



- Kempinski Palace Engelberg*****
- Hotel Bellevue Terminus****
- H+ Hotel & SPA Engelberg ****
- Hotel Waldegg****
- Hotel Bänklialp***
- Hotel Schweizerhof***
- Hotel Terrace***
- Hotel Hoheneck
- Hotel Skilodge
- Berghotel Trübsee

Excursions



Klewenalp

Nidwalden

The Klewenalp-Stockhütte area is a hiking, recreation and winter sports area in the canton of Nidwalden. In addition to its central location and easy accessibility, the Klewenalp-Stockhütte mountain area is characterised by the varied alpine landscape and the incomparably beautiful views over Lake Lucerne.



Pilatus

Luzern



The "Golden Round Trip" takes visitors by boat, rack railway, aerial cableway and panoramic gondola to the most beautiful spots around Mount Pilatus and to the summit. This experience to discover the diversity of Lucerne's local mountain is available from May to October. The gondola lift is open all year round.

Rigi

Luzern

Meetings and team events on the queen of the mountains promise events with foresight. Located in the heart of Central Switzerland, you can reach the Rigi easily from any direction. The rack railways from Arth-Goldau or Vitznau as well as the cable car from Weggis take you comfortably into the idyllic mountain world at almost 1,800 metres above sea level.



Stanserhorn

Nidwalden



After the funicular ride from 1893, take the Cabrio aerial cable car up to the Stanserhorn - 1,900 metres above everyday life. 100 kilometres of alpine panorama and ten Swiss lakes lie at your feet and culinary delights await you in the revolving restaurant.

Titlis

Obwalden

Engelberg at the foot of the Titlis is only 45 minutes away from Lucerne. The peak of the highest excursion mountain in Central Switzerland is 3,020 metres above sea level - high enough to be covered with snow even in summer. The ride on the Rotair - the world's first revolving cable car, the view from the Titlis Cliff Walk and the walk through the glacier grotto with its ice sculptures promise pure spectacle.



Exceptional venues



Meggenghorn castle

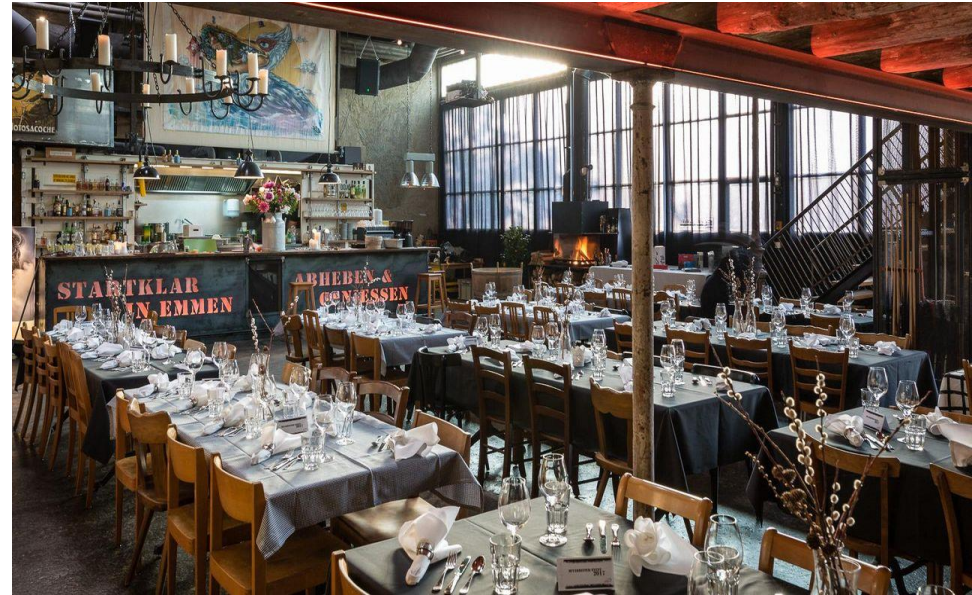


- Number of rooms 3
- Theatre 80
- Seminar 24
- Banquet 66

Startklar eventhall



- Number of rooms 2
- Theatre 115
- Seminar 60
- Banquet 120



Oana citywave & eventlab



- Number of rooms 2
- Theatre 210
- Seminar 180
- Banquet 180

Monastery St. Urban



- Number of rooms 4+
- Theatre 350
- Seminar 200
- Banquet 120

Grafenort manor house



- Number of rooms 5
- Theatre 150
- Seminar 60
- Banquet 100



Heubühne – farm „hinter Musegg“



- Number of rooms 2
- Theatre 130
- Seminar 100
- Banquet 100

Social programmes



«Urchig» Äplerchilbi and a meal from grandma's kitchen



In the event venue «Urchig» in Kulmerau near Lucerne, company events, club excursions or birthday parties can be celebrated. The offer includes the traditional Äplerchibli (Alpine Experience) with a delicious 3-course meal.

- Availability all year
- Number of persons 10 - 140
- Price from CHF 150.-/person

Night at the Swiss Museum of Transport



«Night at the museum» includes stories about travelling and freight transport at night, plus the guides explain what happens in Switzerland in terms of mobility when the sun goes down.

- Availability on request
- Number of persons max. 20
- Price CHF 160.-/group

Let's get social & follow us!

#MyLucerne
#LakeLucerneRegion



@ilove_lucerne



@ilovelucerne



@ilovelucerne



@luzerntourismus



**Lucerne Tourism &
Convention Bureau**