

# VALAIS MATTERHORN REGION.

SALES MANUAL EUROPE 2022.



MATTERHORN REGION  
SWISS ALPS

# Summary.

Access to Valais.	2
Access within Switzerland.	3
Welcome to the MRAG.	5
Our Partners.	8
We are here to help you!	10
General conditions.	11
Alpine Skiing.	12
Winter activities.	15
Hiking.	17
Excursions.	19
Panoramic trains.	22
Culture and tradition.	25
Gastronomy.	28
Adventure/alpinism.	30
Wine tourism.	32
Wellness – thermal baths.	34
Mountain biking.	35
Guest cards.	37
Hotel prices.	38
Timetable cableways.	40

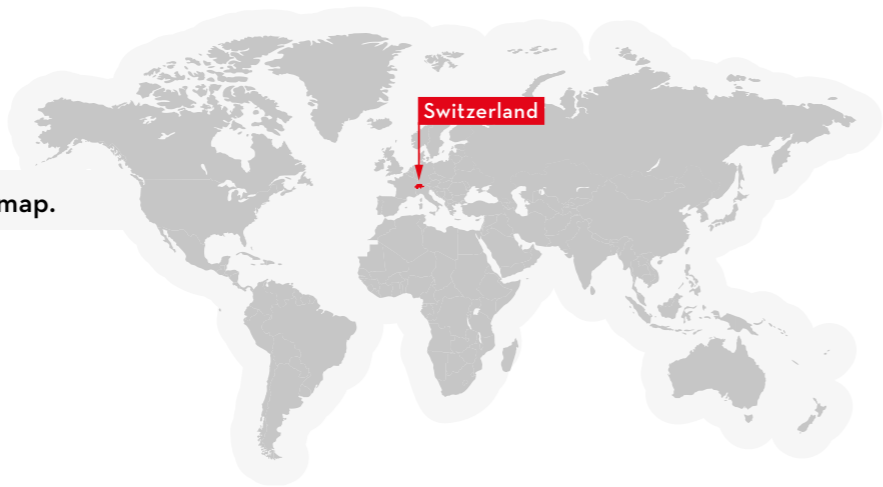
Impressum

Content	Matterhorn Region AG
Design	Forme
Cover	David Carlier
Pictures	David Carlier
	Silvano Zeiter
	Pascal Gertschen
	Finnegan Laver
	Sylvain Cochard
	Alban Mathieu
	Frederic Huber
	Giglio Pasqua
	Myriam Brunner
	Tamara Berger
	Paul Cardi
	Michael Portmann
	Stefan Kürzi



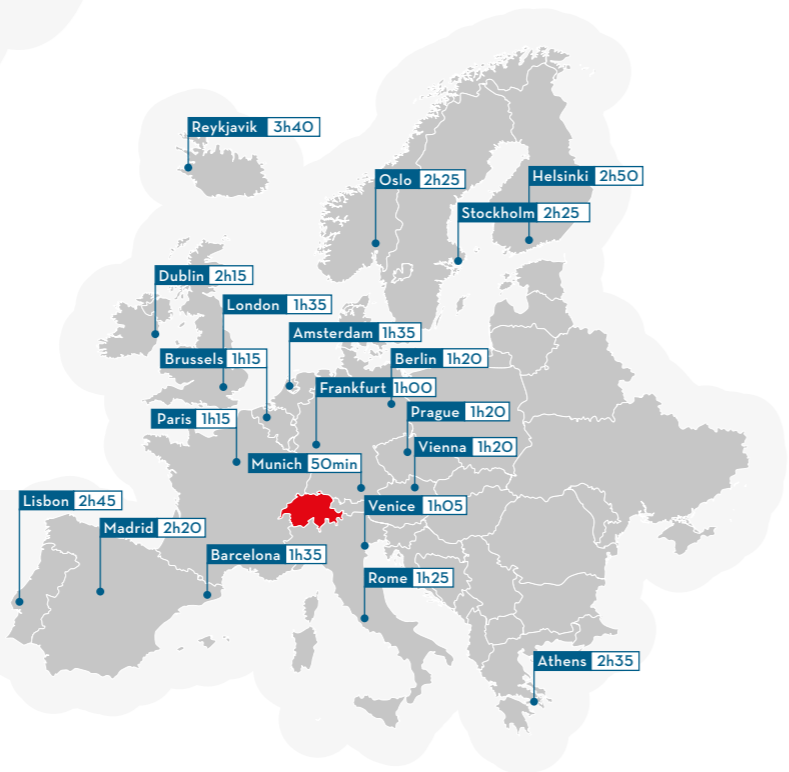
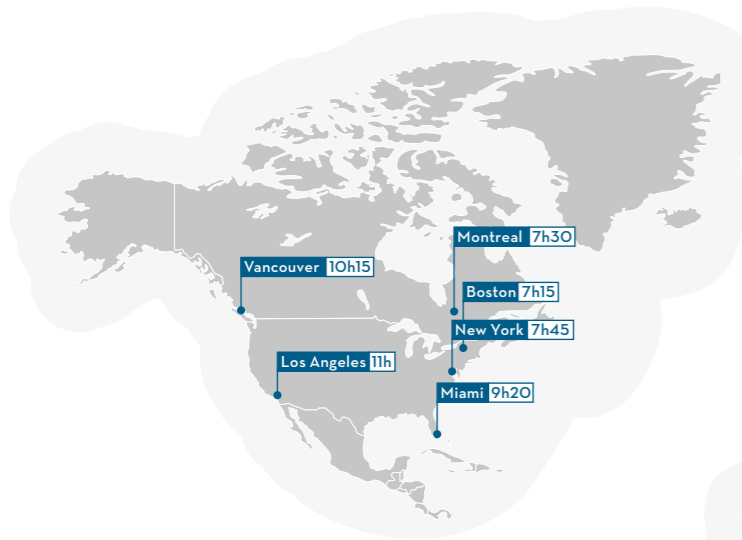
# Access to Valais.

Switzerland on the world map.



## Intercontinental access to Switzerland.

Approx. flight times to Zürich (ZRH), Geneva (GVA), Basel (BSL) or Milan (MXP) airport.



## European access to Switzerland.

Approx. flight times to Zürich (ZRH), Geneva (GVA), Basel (BSL) or Milan (MXP) airport.

# Access within Switzerland.

## All-in-one ticket – Swiss Travel Pass

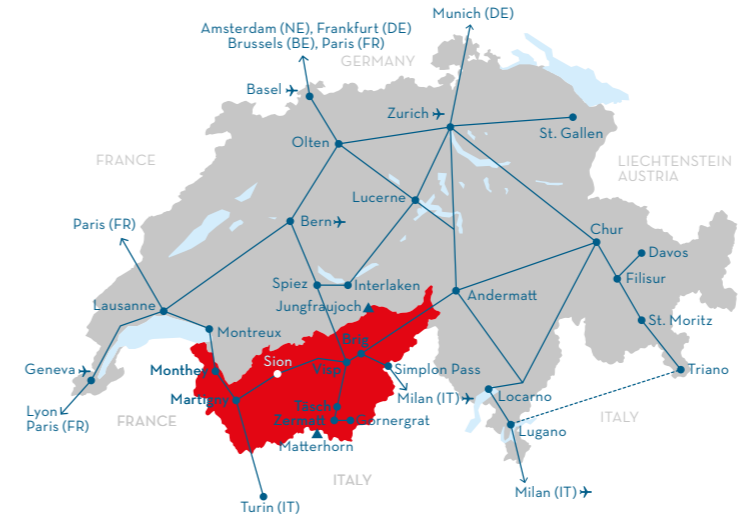
Welcome to the country with the world's densest public transport network. Wherever you wish to go there's a connection. One country – one ticket: with the Swiss Travel Pass, you can enjoy practically unlimited travel by train, bus and boat throughout Switzerland.

### Included services:

- Unlimited travel by train, bus and boat, including premium panoramic trains

- Public transportation in more than 90 towns and cities
- Young travellers up to their 25th birthday receive a 30% discount off the standard price of a Swiss Travel Pass (from 1 January 2022)
- Free admission to more than 500 museums
- Up to 50% discount on most mountain railways

Information about further tickets and offers for families: [mystsn.net/tickets](https://mystsn.net/tickets)



## Distances within Switzerland.

Journey time to Brig and Martigny by car or train.

	Martigny		Brig	
Andermatt	3h10	2h40	2h00	1h40
Basel	2h45	2h20	2h10	3h15
Bern	1h45		1h05	2h15
Chamonix	1h30	0h55	2h30	1h50
Chur	4h30	3h45	3h30	3h45
Davos	5h20	4h15	4h45	4h30
Domodossola	1h30	2h10	35min	1h00
Geneva	1h45		2h30	
Interlaken	1h45	2h00	1h10	2h00
Locarno	3h40	3h00	2h45	2h15
Lugano	4h50	3h40	3h15	2h45
Montreux	35 min		1h15	1h40
Milan	4h30	3h15	3h30	2h15
St. Gallen	3h30	4h00	3h15	4h00
St. Moritz	6h15	5h00	5h20	4h30
Vaduz	3h40	4h20	3h45	
Zurich	2h45		2h10	3h00





# Welcome to the Valais Matterhorn Region.

The Valais Matterhorn Region is the ideal destination for enjoying the good things in life, testing and surpassing one’s limits, spending precious family time together or just bringing peace to body and soul thanks to a pure alpine environment and a magnificent mountain landscape.

## Top winter activities.



**1** Have fun trying out one of the longest ski runs in the Alps.



**2** Tackle a toboggan run and race against friends.



**3** Enjoy Valais specialties, soaking up the sun on a scenic terrace.



**4** Embark on a spectacular snowshoe or ski excursion off the beaten tracks.



**5** Savour a fondue in an unexpected place like an igloo or gondola lift.



**6** Ski or snowboard down a secured freeride itinerary.



**7** Stroll across a frozen lake.



**8** Lace on a pair of skates and spend an afternoon at an ice rink perfecting your pirouettes.



**9** Join a dog-sled race.

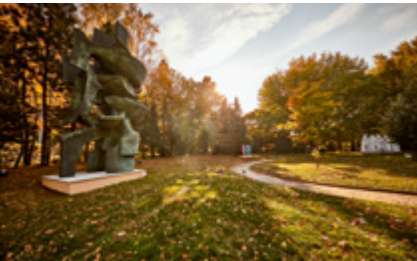


**10** Enjoy the fresh mountain air along a winter walk.

Top summer activities.



1 Stroll through a picture-postcard village with its wooden chalets and barns.



2 See one of more than 2,500 shows, concerts and exhibitions at the theatres, music venues, museums and galleries the Valais has to offer.



3 Tackle one of the 18 via ferratas in Valais or climb your first 4,000 m/ 13,000 ft peak with a professional UIAGM Mountain Guide.



4 Explore the interior of one of Valais' dams.



5 Hike in paradise: stroll through a shady forest or enjoy a dip in a mountain lake.



6 Marvel at the region's geological marvels.



7 Get some height and haul yourself up one of the 20 mountain passes in Valais on a road bike.



8 Spend the night in one of the 50 Swiss Alpine Club (SAC) huts.



9 Walk along a glacier accompanied by a professional UIAGM Mountain Guide.



10 Explore the countless mountain bike trails the canton has to offer.

To enjoy all year-round.



1 Relax in the soothing hot water of one of Valais' five thermal baths.



2 Savour some of the many gastronomic specialties the Valais has to offer, starting with a Raclette du Valais AOP.



3 Meet the St. Bernard dogs, emblems of the region, at Barryland in Martigny or at the Grand St. Bernard Pass.



4 Stroll around one of the many Valais museums to visit a special exhibition.



5 Check out the panorama of Valais mountains from a fresh perspective on a tandem paragliding flight.



6 Visit a winemaker at a vineyard or cellar and taste the best Valais wines.



7 Admire the Matterhorn, our iconic pyramid-shaped mountain, famous worldwide.



8 Go for a walk along a historical "bisse" irrigation channel.

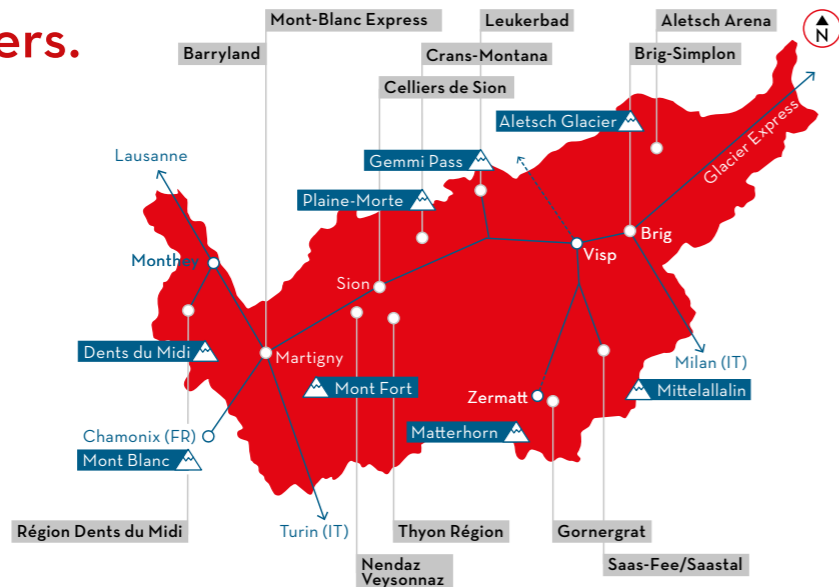


9 Visit a castle or fortress.



10 Hike or bike along one of the many historical routes that crisscross Valais.

# Our Partners.



## Aletsch Arena – A natural experience at the Great Aletsch Glacier.

- **Base resort altitude:** 1,925 m/6,316 ft (Riederalp)
- **Summit elevation:** 2,869 m/9,412 ft (Eggishorn)
- **Three viewpoints:** Moosfluh (2,333 m/7,654 ft), Bettmerhorn (2,647 m/8,684 ft), Eggishorn (2,869 m/9,412 ft)
- The three viewpoints offer the best view across the 20 km/12.6 mi long Aletsch Glacier, the longest ice flow in the Alps and the heart of the Swiss Alps' Jungfrau-Aletsch UNESCO World Heritage Site
- **Swiss Travel Pass & Half Fare Card:** 50% off cable car rides in the area
- **Aletsch Explorer:** One ticket for unlimited rides on the cableways and train in the area. Includes all three viewpoints
- **Car-free destination**
- **Ski in - ski out**
- **Grand Tour of Switzerland site**



## Brig Simplon – Between history, culture and leisure.

- **Town altitude:** 691 m/2,267 ft
- **Highest elevation in the area:** Rosswald 1,819 m/5,968 ft (by cable car) Simplon Pass 2,007 m/6,585 ft (by car)
- Every guest who pays the visitor tax receives a **guest card** including 50% admission to the Stockalper Castle (official tours from 01.05.-31.10), free skate rental at the ice sports centre "iischi arena" and many other discounts
- **Swiss Travel Pass & Half Fare Card:** 50% off cable car rides to Rosswald
- **Brigerbad: Largest outdoor thermal swimming pool in Switzerland**
- **Stone-Eagle:** Measures 9.3 m/30 ft high on the Simplon Pass



## Saas-Fee/Saastal – In the middle of the 4,000 m high peaks.

- **Base resort altitude:** 1,800 m/5,906 ft
- **Summit elevation:** 3,500 m/11,482 ft (Mittelallalin)
- **USP's:** Car-free glacier village, Summer ski area (20 km/12.4 mi), Highest mountain of Switzerland
- (Dom – 4,545 m/14,911 ft), Ice Pavilion at 3,500 m / 11,483 ft)
- **Swiss Travel Pass & Half Fare Card:** 50% reduction on cable car prices for pedestrians
- **SaastalCard (guest card):** Summer: all cable cars (except Metro Alpin to Mittelallalin) and post buses included
- **Winter:** post buses included
- **World records:** Highest underground train (Metro Alpin) and highest revolving restaurant in the world



## Leukerbad – The largest thermal spa resort in the Alps.

- **Base resort altitude** (Leukerbad) 1,411 m/4,629 ft
- **Summit elevation** 2,610 m/8,563 ft (Torrent Schwalbennest)
- **Largest natural thermal spa resort** in the Alps with over 500 years of thermal spa tourism
- **32 thermal pools** and thermal springs up to 51 C/124 F
- **Free bus** (Leuk and Leukerbad) with Swiss Travel Pass + 50% for Torrent and Gemmi Cableways
- **Free Leukerbad Card Plus (LBC+)** reductions and free services for every overnighter
- **Mountain & Spa Pass** (CHF 40.- p.p./per day) access to all cableways, viewpoints and public thermal spas. Added benefits for guests with the LBC+ card
- **European's longest and oldest** via Ferrata
- **Gemmi – Top of Leukerbad** viewpoint with connection to the Bernese Oberland
- **Local specialties** Varner Wine, dried sausages, "Sud 51" beer and cheeses from Leukerbad farmers



## CMA – Open 365 days a year.

- **Base resort altitude** Crans-Montana 1,500 m/4,921 ft
- **Summit elevation** 3,000 m/9,842 ft (Plaine Morte)
- **Two viewpoints** Plaine Morte (3,000 m/ 9,842 ft), Cry d'Er (2,200 m/ 7,217 ft)
- **Swiss Travel Pass & Half Fare Card** Valid on bus between Sion and Crans and on the funicular and bus between Sierre and Montana
- **Pass Altitude (Summer only)** One ticket for unlimited rides on the cableways in the area. Includes access to the viewpoints.
- **"Family destination"** quality label
- **Possibility of Ski in - ski out hotels and appartements**
- **The mountain resort with the broadest view of the Alps**
- **World Cup ski competitions**
- **European Masters golf**



## Thyon Région – Slow life.

- **Base resort altitude**
- Thyon: from 1,800 to 2,100 m/5,905 ft to 6,890 ft
- **Summit elevation**
- 2,413 m/7,917 ft (Tsermetta)
- 2,490 m/8,170 ft (Mont Rouge)
- **Three viewpoints:**
- Thyon 2000 (2,100 m/6,890 ft), Etherolla (2,890 m/9,481 ft), Trabanta (2,193 m/7,194 ft)
- **HostCard** with car-free destination in winter and discounts on summer activities
- **Ski in - ski out**
- **Biggest ski resort - 4 Vallées** - entirely located in Switzerland
- Located in the **Val d'Hérens region** and its rich culture in summer



## Nendaz /Veysonnaz – Biggest ski resort entirely located in Switzerland.

- **Base resort altitude:** Nendaz: 1,400 m/4,593 ft, Veysonnaz: 1,400 m/4,593 ft
- **Summit elevation:** 3,336 m/10,945 ft (Rosablanche)
- **Three viewpoints:** Thyon 2000 (2,000 m/6,561 ft), Tracouet (2,200 m/7,217 ft), Mont-Fort (3,330 m/10,925 ft)
- **Biggest ski resort - 4 Vallées** - entirely located in Switzerland
- **Ski in - ski out**
- **World Cup ski competitions**
- **Swiss Travel Pass & Half Fare Card:** Valid on bus between Sion, Nendaz/Veysonnaz
- **Pass Altitude (Summer only):** One ticket for unlimited rides on the cableways in the area. Validity from three to six days. Includes all three viewpoints.
- **Valais Drink Pure Alphorn Festival** Unique event with international Alphorn players



## Région Dents du Midi – The swiss accent of the Portes du Soleil.

- **Base resort altitude** Champéry: 1,050 m/3,445 ft, Val-d'Illiez: 950 m/3,117 ft, Les Crosets: 1,700 m/5,577 ft, Champoussin: 1,580 m/5,184 ft, Troistorrens: 770 m/2,526 ft, Morgins: 1,400 m/4,593 ft
- **Summit elevation** Croix-de-Culet viewpoint: 1,963 m/6,440 ft
- **Swiss Travel Pass/Half-price card** 50% off cable car rides in the area
- **Multi Pass (summer only)** Sleep in any resort in the area and get free access to all cable cars in the entire Portes du Soleil region (France and Switzerland) in addition to more than 60 free activities and discounts.
- **Nearest Valais resort** to Geneva (1h40)
- **Biggest international ski and bike resort** (France and Switzerland)
- Home of the **Swiss Wall**, one of the steepest ski slopes in the world.
- **Ski-in ski-out resorts**
- **First ski touring trail in Switzerland**
- **"Eau Rouge"** river, Morgins' iron source of water – unique in the world



## Gornergrat Bahn – The Matterhorn Railway.

- The Gornergrat train takes you up from Zermatt to Gornergrat at 3,100 m/10,170.6 ft above sea level.
- View of 29-4,000 metre / 13,000 ft peaks (of which 48 in Switzerland) including the Matterhorn!
- The Gornergletscher is the **second biggest glacier in the Alps**
- Accessible 365 days without changing Trains
- Departure 50 metres from Zermatt train station
- Guaranteed seats (Priority Boarding)
- Opening windows with great photo Opportunities
- Switzerland's first electric cogwheel railway (1898), and second worldwide
- Travel time: 33 minutes (one way)
- Various summer/winter activities
- My Matterhorn Movie/Film plus Photopoint
- Zoom the Matterhorn: The multimedia experience world
- **Glacier Express Window** on the Swiss Alps Panoramic train between St.Moritz / Davos and Zermatt



## Les Celliers de Sion – The first Oenoparc in the heart of Valais.

- Les Celliers de Sion invites you on a unique exploration of the history and wines of the Bonvin and Varone estates.
- The oenoparc is **open daily** from 10am to 8pm.
- **Free entrance** to the Wine shop
- Outdoor packages can be booked from April to October. For FIT: Thursday, to Sunday
- For **GROUPS:** Daily
- Indoor packages can be booked every day for FIT or GROUPS. For FIT: Friday, Saturday, Sunday



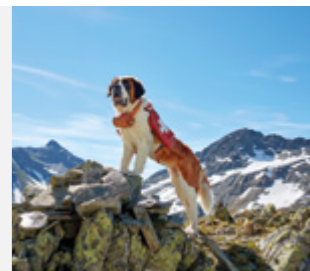
## The Mont-Blanc Express – The best way to see the Mont-Blanc.

- **The Mont-Blanc Express train** has linked the Rhône valley and the Mont Blanc, Martigny and Chamonix since 1906.
- After travelling up the steep rack-and-pinion track between Vernayaz and Salvan, with its 20% gradient, you will discover the spectacular **Trient valley** and typical alpine villages steeped in history: Les Marécottes, Finhaut and Vallorcine.
- The Mont-Blanc-Express runs **all year round**
- Length: **23 km**
- Journey time: **90 minutes**
- To be **discovered along the route:** Trient Valley, Verticalp Emosson



## Barryland – The museum dedicated to the St. Bernard.

- Barryland is a **family-friendly interactive museum** dedicated to the famous St. Bernard dogs, which were first bred by canons on the nearby St. Bernard Pass.
- The museum is **open daily from 10am until 6pm**. The only exceptions are December 24th and 25th when it is closed throughout the day.
- **Free entrance** to the museum for all Swiss Travel Pass holders.
- **Did you know that a St. Bernard dog...** ... reaches a height of 65 to 90 cm /25.6 to 35.5 in at the shoulder? ... can be long or short haired? ... sleeps between 12-15 hours a day? ... can live up to 9 years on average if kept and cared for properly? ... can smell up to 50 times better than humans?





## We are here to help you!

Our Market Managers have extensive knowledge of Valais' destinations and products. Thanks to our dynamic reservation platform, we can book accommodations, excursions, activities, ski tickets & rentals and much more!

Tell us about your customers' needs and desires and we will create the perfect travel package for them. We are

your one-stop solution for product recommendations, brochures & maps, bookings, logistics and billing.

Our booking team can get you the best available prices at net rates and provide you with top-notch customer service 7 days a week, before, during and after your customers' stay in our region. Contact us now so we can help you discover the best Valais has to offer.

### Our Booking Team.

booking@matterhornregion.ch  
+41 27 327 35 90



Peter Lehner



Christina Ruffener



Rim Alamari

### Our Market Managers.



**Emilie Morard**  
Head of Markets Europe  
Market Manager UK/France  
+41 27 327 35 66  
emilie.morard@valais.ch



**Valérie Delessert**  
Market Manager for BeNeLux  
+41 27 327 35 94  
valerie.delessert@valais.ch



**Lucie Guntern**  
Market Manager for Italy/  
Nordics  
+41 27 327 35 88  
lucie.guntern@valais.ch



**Miriam Nussbaumer**  
Market Manager for Germany  
+41 27 327 35 77  
miriam.nussbaumer@valais.ch

### Practical information at a glance.

**Surface of the canton:** 5,224.49 km<sup>2</sup>/2,017.19 mi<sup>2</sup>  
**Capital:** Sion  
**Inhabitants:** 343,955 - 2019  
**Language:** French (Valais), German (Wallis) and English widely spoken  
**Currency:** Swiss Francs (Euros in some shops)  
**Electrical current:** 230 volts AC / 50 Hz  
**Socket type:** J & type C  
**Tips, VAT & Service charges:** Included in prices  
**Climate:** 4 distinctive seasons  
**Phone country code:** +41 or 0041  
**Time zone:** Central European Time (CET), summer time applies from end of March to end of October

### Valais Matterhorn Region in numbers.

45 peaks above 4,000 m/13,000 ft  
40,000 ha/98,842 ac of natural parks  
1 UNESCO World Heritage Site  
8,000 km/4,970 mi of hiking trails  
100 "bisses" (irrigation channels)  
2,000 km/1,243 mi of road cycling routes  
1,500 km/932 mi of mountain bike trails  
2,000 km/1,243 mi of ski slopes  
4,000 animal species  
8 "Family Destination" resorts  
5 thermal spa resorts  
55 grape varieties  
66 restaurants listed by Gault & Millau  
8 Michelin-starred restaurants  
8 PDO-PGI (AOP/IGP) products

## General conditions.

### Price policy

All offers in CHF, prices subject to change.  
All rates are per person.  
Prices depend on the exchange rate of the day with your local currency.  
FIT: 1-9 PAX  
Groups: from 10 PAX  
Group rate applies from 10 persons on.  
For groups from 10 persons on: tour leader free of charge for all services.  
Children: from 6 to 16 years old  
Piccolo: under 6 years

### Children Policy

In hotel accommodation:  
6-15.99 years old (additional bed with parents in twin room): 50% reduction.  
0-5.99 years old (share-bed with parents in twin room): free of charge.  
For all other products special children conditions are available.

### Cancellation conditions.

Cancellation fees are calculated on the total price of the product:  
30 days before arrival: no costs  
29-15 days before arrival: 50% of the total price  
14-7 days before arrival: 80% of the total price  
6-0 days before arrival: 100% of the total price

### Reduction conditions

21-14 days before arrival: 30% of the entire group can be cancelled FOC  
13-07 days before arrival: 10% of the entire group can be cancelled FOC



[clean-and-safe.ch](https://clean-and-safe.ch)





Alpine Skiing.

With 45 peaks higher than 4,000 m/13,000 ft, the Valais Alps offer an unrivalled destination for outdoor activity enthusiasts. In winter, 2,000 km/1,243 mi of marked and well-groomed slopes, divided among 34 ski areas, welcome snow sports enthusiasts and promise breathtaking views of the majestic mountains all around. Switzerland’s highest ski areas are here, with slopes up to 3,800 m/12,467 ft, above sea level,

guaranteeing excellent snow conditions. Valais boasts many other superlatives too, such as Europe’s longest ski slope (25 km/15.5 mi) and the world’s highest underground funicular and highest revolving panoramic restaurant, perched at an altitude of 3,500 m/ 11,482 ft, high above Saas-Fee.

Skisafari.

**Valais** 11.12.2021-25.04.2022 & Dec 2022 - Apr 2023

Take advantage of Valais’ inherent diversity and discover a new ski area every day with centrally located accommodation and an exclusive Skisafari ski pass, providing access to every ski slope in the canton.

Services included

- 4 to 5 nights in the same hotel with breakfast
- 3 days of skiing within 5 consecutive days or 4 or 5 days of skiing within 6 consecutive days (1 day per ski area)
- Access to all ski areas in Valais
- Guest's choice of hotel in every destination in Valais

Offer	Rates
*4 nights & 3 ski days	From CHF 354
*5 nights & 4 ski days	From CHF 450 / 528

\*Per person sharing a double room, excluding visitor's tax.  
Prices are indicative and will depend on the rate of the day when reserving this package.  
Please check the "Marketplace Valais" booking platform to ensure the best available rate for the desired dates. 10% commission on current prices for B2B bookings.

Skiing in the Aletsch Arena.

**Aletsch Arena** 08.12.2021 - 18.04.2022 & 08.12.2022 - 15.04.2023

Discover 104 km/64 mi of dream slopes between Riederalp, Bettmeralp and Fiesch-Eggishorn in the Aletsch Arena. Located between 1,845 m/ 6,053 ft and 2,869 m/9,413 ft, the resort has ideal skiing conditions from December to April. Ski-in, ski-out are magic words to a skier – and magic that is possible almost everywhere in the Aletsch Arena. Most holiday accommodation on this sunny car-free plateau is right on the slopes.

Services included for FIT and groups

- 4 or 7 nights in a standard hotel valley with breakfast
- 3 or 6 days ski pass Aletsch Arena

4 nights and 3 days	FIT	Groups
Adults	CHF 563.60	CHF 491.60
Children	CHF 281.80	CHF 245.80
Piccolo	Free	Free
7 nights and 6 days	FIT	Groups
Adults	CHF 1,001.50	CHF 875.50
Children	CHF 500.75	CHF 437.75
Piccolo	Free	Free

Skiing in Saas-Fee.

**Saas-Fee/Saastal** November 1st until mid-April

Perfectly groomed ski slopes reach from 3,600 m/11,811 ft right down to the car-free village on 1,800 m/5,905 ft. The ski area counts 100 km/ 62 mi of slopes, surrounded by 13 4,000-metre peaks (13,000 ft). Saas-Fee is one of the ski areas in the world where snow is guaranteed. Enjoy great snow conditions almost 6 months a year.

Services included for FIT and groups

- 4 or 7 nights in a hotel with breakfast
- 3 or 6 days ski pass Saas-Fee
- Visitors' tax

4 nights and 3 days	FIT	Groups
Adults	CHF 651	CHF 551
Children	CHF 330	CHF 280
Piccolo	Free	Free
7 nights and 6 days	FIT	Groups
Adults	CHF 1,152.50	CHF 975.50
Children	CHF 581.75	CHF 493.75
Piccolo	Free	Free

First Time Ski Experience at Arnouva.

**Crans-Montana Mountain Resort** Winter season according to the cable car timetable

You’re never too old or too young to start learning to ski. Have a try with a ski teacher who will accompany you every step of the way until you can manage on your own. Choose the length of your course depending on your ambitions and carry on using your ski pass all day after the class. And for when those fresh air hunger pangs strike, the restaurant in the beginner’s area is open the whole afternoon.

Services included for FIT and groups

- Ski Ticket for one, two or three hours
- Ski lesson for one, two or three hours

Option

- Ski ticket for the entire ski area for the rest of the day
- Ski equipment rental (ski, ski boots, helmet)
- Winter equipment rental (pants, jacket, gloves)
- Three-course lunch at Arnouva Restaurant

Category	FIT	Groups
Adults	1 hour CHF 120	1 hour CHF 110
	2 hours CHF 170	2 hours CHF 160
	3 hours CHF 220	3 hours CHF 210
Children (from 6 to 16 years old)	1 hour CHF 115	1 hour CHF 105
	2 hours CHF 165	2 hours CHF 155
	3 hours CHF 215	3 hours CHF 205
Piccolo (under 6 years old)	1 hour CHF 105	1 hour CHF 100
	2 hours CHF 155	2 hours CHF 150
	3 hours CHF 205	3 hours CHF 200



The largest Snow Garden in Valais.

**Thyon Région** Daily during the ski season

Discover the amazing sensation of skiing or snowboarding with this experience designed expressly for beginners under the safe guidance of a professional instructor in the 4 Vallées, Switzerland's biggest ski area. And when it comes to kids, Thyon has the largest snow garden in Valais, enabling your children to discover the joys of skiing in a quality setting, with experienced instructors.

Services included for FIT and groups

- Ski/snowboard equipment and helmet
- Professional instructor
- Adults: ski pass printse sector
- Children + Piccolo: snow garden pass

Category	FIT	Groups
Adults	CHF 184	CHF 154
Children	CHF 184	CHF 154
Piccolo (available from 3 years old)	CHF 123	CHF 107

Option for children (in addition to the snow garden pass): ski pass for 2 ski lifts CHF 8



Freeride with a mountain guide.

**Thyon Région** All day on request – min 4 pax

For one half-day, discover our beautiful region while enjoying the liberty of freeriding! Enjoy this outing with friends in complete safety thanks to the supervision of one of our mountain guides.

Services included for FIT and groups

- 1 Mountain Guide for 8 pax

Category	FIT	Groups
Adults	CHF 90	CHF 85



Freeride with a professional.

**Nendaz or Veysonnaz** Mid-December until mid-April

Experience the ultimate ski sensations supervised by a professional freerider while exploring the 4 Vallées ski area, Switzerland's largest ski area with 400 km/7,249 mi of slopes including 7 freetrack options.

Services included for FIT and groups

- 2 overnights
- 1-day 4 Vallées ski pass
- Equipment rental
- Safety equipment rental (shovel, probe and avalanche transceiver)
- Professional guiding
- Lunch in a mountain restaurant

Category	FIT (min. 2 pax)	Groups
Adults	CHF 674	CHF 581
Children (from 12 years old)	CHF 456.50	CHF 376.50



Ski Safari Nendaz and Veysonnaz.

**Nendaz & Veysonnaz** Mid-December until mid-April

Explore the 400 km/249 mi of the largest ski area in Switzerland by day and visit the charming villages of Nendaz & Veysonnaz in the evening. Stay in Veysonnaz for 4 nights before spending an additional 4 discovering Nendaz. Carry on having fun on the slopes and let your luggage transfers be taken care of for you.

Services included for FIT and groups

- 4 overnights in Nendaz
- 4 overnights in Veysonnaz
- 6-day 4 Vallées ski pass
- Equipment rental
- Luggage transfers

Low season	FIT (min. 2 pax)	Groups
Adults	CHF 1,302*	CHF 1,162
Children	CHF 685*	CHF 615
Piccolo	CHF 157*	CHF 129
High season	FIT (min. 2 pax)	Groups
Adults	CHF 1,318*	CHF 1,176
Children	CHF 693*	CHF 623
Piccolo	CHF 157*	CHF 129

\*Prices per person, for minimum 2 pax.



Ski-in / Ski-out Unlimited.

**Région Dents du Midi – Les Crosets** Mid-December until mid-April

Discover the many slopes that make up the largest international ski area in the world. Imagine having breakfast and going straight to the top of the 600 km/373 mi of ski slopes just by pushing the door of your hotel. With us, anything is possible.

Services included for FIT and groups

- 7 overnights in a 3\* Hotel ski-in / ski-out with breakfast
- 5 days of skiing within 6 consecutive days in the ski area of Les Portes du Soleil

Category	FIT	Groups
Adults*	CHF 2,204	CHF 2,145
Children	CHF 1,714	CHF 1,684
Piccolo	CHF 707	CHF 707

\*Package available for a minimum of 2 people: price for a double/twin room.



Winter activities.

When the snow crystals sparkle in the sunshine and the Valais Alps reveal all their fairy-tale beauty, it is time for everyone who loves winter to take out their walking boots, snowshoes or touring skis to explore the many trails and routes that lead across the pristine white slopes. This is a boundless playground for all who love nature, the ideal destination for all kinds of active holidays. From gentle walks to challenging ascents, the

choice is vast: the canton boasts winter walking trails, marked snowshoeing trails and secured ski-touring parks. Those who prefer a less energetic outing will enjoy a ride in a dog sleigh, an original experience sure to delight visitors of all ages.

Guided snowshoe tour.

**Aletsch Arena** 08.12.2021- 18.04.2022 & 08.12.2022 - 15.04.2023

A snowshoe tour with a guide who knows the area well is the best way to explore the Aletsch Arena on snowshoes. Your guide will take you to the most beautiful spots in the area while giving advice on technique and presenting some amazing highlights.

Services included for groups

- Guided snowshoe tour
- Priceless view on the Great Aletsch Glacier
- Not included: eventual cable car ticket (suggestion: Aletsch Explorer)

Category	Groups
Adults	CHF 33
Children	CHF 33
Piccolo	CHF 33



Torchlight walk followed by a delicious Swiss cheese fondue.

**Saas-Fee/Saastal** December until mid-April

Let your vacation awaken your senses. Start with a fairy-tale night walk above Saas-Fee, and then enjoy a delicious cheese fondue in the glacier village. What could be more romantic? The Swiss national dish surely tastes even better in this atmosphere-filled setting.

Services included from four persons

- Guided torchlight walk
- Cheese Fondue dinner

Category	Groups
Adults	CHF 45
Children	CHF 45
Piccolo	Free



## Winter Wonderland. Skiing, sledging, walking & bathing.

**Leukerbad** Mid-December until April

An unforgettable winter wonderland awaits you with 55 km/34 mi of ski slopes, 40 km/25 mi of winter hiking trails, 5 km/3 mi of sledge runs, and 40 km/25 mi of cross-country skiing trails. You choose! Find your dream winter experience either on the Gemmi and Torrent mountains or in the village itself. A relaxing, bubbly warm-up awaits you afterwards (or before) in one of the public thermal spas.

### Services included for FIT and groups

- 1 day Snow & Spa Pass: Cable car (Gemmi, Torrent, Snowpark) and 3-hour admission ticket for a public spa (Leukerbad Therme, Walliser Alpentherme\* or Therme 51\*\*)

Category	FIT	Groups
Adults	CHF 62.90	CHF 59.20
Children	CHF 53.55	CHF 50.40
Piccolo	Free	Free

\* Walliser Alpentherme: No access for children under 8 years old.

\*\*Therme 51\*: only for FIT.

## Snowshoeing at 3,000 m on the Plaine Morte.

**Crans-Montana Mountain Resort** Winter season according to

### the cable car timetable

Imagine the wide open spaces of the Plaine Morte surrounded by mountain peaks. Hear the crunching of the snow beneath your feet in the invigorating glacial air. Experiencing the immaculate powder on the glacier is what this snowshoe walk at 3,000 m is all about. All equipment available from our sports store and guides available for longer escapades.

### Services included for FIT and groups

- Return cable car ticket
- Snowshoe equipment rental

### Option

- Winter clothing rental
- Snowshoeing guide for CHF 50 per hour

Category	FIT	Groups
Adults	CHF 110	CHF 88
Children (from 6 to 16 years old)	CHF 90	CHF 72
Piccolo (under 6 years old)	n/a	n/a



## Olympic curling workshop.

**Région Dents du Midi – Champéry** All year round (except May\*)

Discover a Youth Olympic venue where every world curling champion has played in #Lausanne2020! This is a thrilling game of skill and strategy on ice in which players slide enormous polished granite stones down a lane, towards a target or aimed at the other team's stones for spectacular "take-outs". Give it a shot!

### Services included for FIT and groups

- Equipment rental
- Coach

\*Annual maintenance work for 2-3 weeks during the month of May.  
Please ask if the offer is available.

Category	FIT	Groups
Adults	CHF 50	CHF 42
Children (from 9 years old)	CHF 50	CHF 42
Piccolo	n/a	n/a

## Husky sledding experience.

**Région Dents du Midi – Morgins** December until April

Discover the wonderful world of mushing with the Val de They wolf team! The adventure begins with an introduction to the dogs, the equipment and driving the sled; followed by a trip on the passenger seat for a 2.5 km/1.5 mi loop. After a short break for the dogs, you'll be able to drive the sled with your own team of dogs. The musher will guide you with his sled while children can have another round as passengers with the musher. Once the rides are over, you'll have time to take pictures with the dogs and hug your crew of the day.

### Services included for FIT

- Mushing workshop with a professional
- Sled dog ride

Category	FIT
Adults	CHF 52.50
Children	CHF 42
Piccolo	Free



## Hiking.

More than 8,000 km/4,970 mi of marked trails in Valais ensure that hiking enthusiasts are spoilt for choice. Walks of all difficulty lead across spectacular mountain landscapes, through fragrant forests of ancient larch trees, beside refreshing "bisses" (historical irrigation channels), through a lush natural park, along historical routes and via vineyard trails:

the options are boundless. Hikers and other outdoor adventure enthusiasts will appreciate the beauty of pristine nature, home to a wealth of flora and fauna, with glorious scenery to accompany each route. Throughout the region, from the floor of the Rhone valley up to the majestic glaciers, hikers can look forward to bewitching panoramic views.

## Aletsch Explorer.

**Aletsch Arena** 08.12.2021 - 23.10.2022 & 08.12.2022 - 22.10.2023

The Aletsch Explorer is a combined cableway and train ticket including unlimited travel in the Aletsch Arena. One to 21-day tickets are available.

### Services included for FIT

- Free travel on all Aletsch Bahnen AG (Riederalp, Bettmeralp, Fiesch-Eggishorn) services.
- Free travel on the Brig - Mörel - Betten Talstation - Fiesch-Fürgangen train line

Category	FIT	Groups
Adults	CHF 49.60	CHF 34.80
Children	CHF 24.80	CHF 17.40
Swiss Travel Pass	CHF 24.80	CHF 17.40
Piccolo	Free	Free

## Saas Trekking.

**Saas-Fee/Saastal** Mid-June until mid-October

Walk the adventure trail up to the Almagelleralp and enjoy a night in the Saas mountains. The next day you walk around 3.5 hours to Kreuzboden.

### Services included for FIT and groups

- 1 overnight at Almagelleralp incl. half board
- Cable car ticket Saas-Almagell - Furggstalden
- Cable car ticket Kreuzboden - Saas-Grund

Category	FIT	Groups
Adults	CHF 113	CHF 95.50
Children	CHF 56.50	CHF 48
Piccolo	CHF 37.50	CHF 32.50

## Pure Alpine Water.

**Nendaz** July - August

Discover how Alpine water has shaped the Nendaz region by walking with a guide along a bisse, an irrigation channel created in the past to water mountain crops and orchards. Visit the Cleuson Dam, see snow and admire the breathtaking view on top of the Mont-Fort (3,330 m/10,925 ft).

### Services included for groups

- 2 overnights
- Return transfer by cable car to the Mont-Fort
- Visit to the Cleuson Dam
- Guided walk along a bisse
- Lunch in a high altitude restaurant
- Transfers

Category	Groups
Adults	CHF 376
Children	CHF 235.50



## Nendaz Trekking.

**Nendaz & Veysonnaz** July - August

Depart from Veysonnaz and hike through the Nendaz Valley to Nendaz. Walk at your own rhythm and spend your nights in friendly lodges in the heart of the mountains, or in cabins situated in the middle of idyllic sites surrounded by the majestic landscapes between these two destinations. (Non-accompanied tour with the possibility of including the services of a guide).

### Services included for FIT and groups

- 2 overnights in mountain huts including full-board without drinks
- Transfers by cable car
- Bus transfer
- Topographical map

Category	FIT & Groups
Adults	CHF 178.50
Children	CHF 126
Piccolo	n/a



## Wild plants and their secret well-being properties.

**Région Dents du Midi** April - October

Discover a variety of wild plants accompanied by a mountain enthusiast. Learn how to make balms or herbal teas beneficial to your well-being from the countless varieties of flowers and aromatic herbs nature offers us summer and winter alike.

### Services included for FIT and groups

- Guided tour in the mountains
- Workshop (3h)

Category	FIT	Groups
Adults	CHF 88.50	CHF 66.30
Children	CHF 77.40	CHF 66.30
Piccolo	n/a	n/a

## Thermal Canyon – an impressive hike through the gorge.

**Leukerbad** May - October

This two-hour summer hike takes you over a variety of hiking paths starting in Leukerbad, passing through flower meadows and then continuing up to the gorge of the River Dala where the suspension bridge beside the stunning waterfall is an absolute must see. With a bit of luck, you might also get a glimpse of our famous Valais Hérens cows or grazing ponies.

### Services included for FIT

- Individual walk without a guide

### Services included for groups

- Accompanied walk with an English speaking guide

Category	FIT	Groups
Adults	Free	CHF 8
Children	Free	CHF 8
Piccolo	Free	Free



## Excursions.

However you choose to travel in Valais – by train, bus or cable car – your excursions begin well before you reach your final destination. Winding roads, charming villages, historical alpine passes and idyllic landscapes provide ever-changing views, with the majestic 4,000-metre summits (13,000 ft) as a dramatic backdrop. Throughout the canton, more than 100 cable cars are ready to carry you to panoramic

viewpoints on some of the highest peaks: the perfect way to appreciate the bewitching beauty of the alpine scenery and the majesty of the glaciers at the end of the valleys. Take advantage of the opportunity to enjoy a meal at one of Europe’s highest panoramic restaurants and try some local delicacies – and so savour the incomparable wealth of Valais flavours.

## Viewpoint Package Aletsch Glacier.

**Aletsch Arena** 08.12.2021 - 23.10.2022 & 08.12.2022 - 22.10.2023

With a trip to Moosfluh, Bettmerhorn or Eggishorn, the viewpoint package combines the joys of nature with culinary delights and is an absolute must, including cableways, admission to exhibitions and a meal.

### Services included for groups

- Cable car journey from the valley to the viewpoint (Mörel-Moosfluh, Betten Talstation - Bettmeralp or Fiesch - Eggishorn)
- 3-course menu at Restaurant Aletsch Mörel, Panorama-Restaurant Bettmerhorn, or Alpenlodge Fiescheralp according to the viewpoint place
- Admission to the Bettmerhorn Glacier World multimedia exhibition, along with the Eggishorn trail and energy spots.
- Free bus parking in Betten Talstation, Fiesch
- One of the three destinations has to be selected (19.04.2022-03.06.2022 & 16.04.2023-02.06.2023: only Viewpoint Bettmeralp is possible)

Category	Groups
Adults	CHF 45.90
Children	CHF 36.90
Swiss Travel Pass	CHF 36.90
Piccolo	CHF 7.20



## Viewpoint Package Allalin.

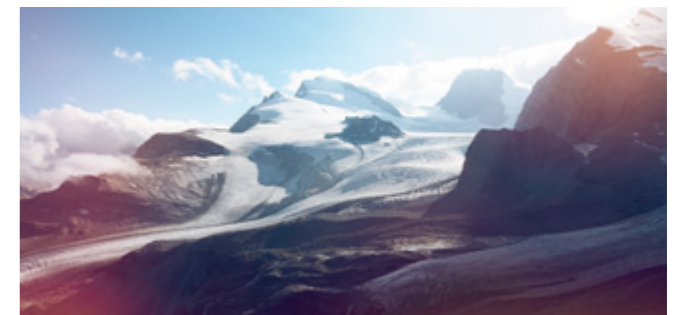
**Saas-Fee/Saastal** June - April

Visit one of the biggest Ice Pavilions and enjoy the 360° view at the highest revolving restaurant in the world, surrounded by the highest 4000-metre peaks (13,000 ft) in Switzerland.

### Services included for FIT and groups

- Return cable car ticket up to Mittelallalin (3,500 m/11,482 ft)
- Entrance to the Ice Pavilion
- Lunch at the revolving restaurant
- Extra runs on request possible during May (only for groups)

Category	FIT	Groups
Adults	CHF 135	CHF 75
Children	CHF 70	CHF 60
Piccolo	CHF 20	CHF 15



## Gemmi: A stunning viewpoint, Alpine Crossing & Rösti Fun.

**Leukerbad** 18.12.2021 - 17.04.2022 & 21.05.2022 - 06.11.2022

Welcome to the Gemmi – the very top of Leukerbad, with a breathtaking view at 2,350 m/7,710 ft making you feel as free as the local bearded vulture (Bartgeier) bird. The Gemmi Alpine Crossing is a historical hike from Leukerbad to Kandersteg, undertaken by many famous people including Thomas Cook and Johann Wolfgang von Goethe. The shorter, circular trail around the Lake Dauben takes around two hours from the Gemmi Pass and either hike can be rounded off with lunch at the viewpoint.

**Services included for FIT and groups**

- Cable car transfer Leukerbad – Gemmi – Lake Dauben – Leukerbad
- Rösti Fun at the new Gemmi Restaurant
- Guided hike in English around Lake Dauben for GROUPS

Category	FIT	Groups
Adults	CHF 52	CHF 56
Children	CHF 26	CHF 22.50
Piccolo	n/a	n/a



## Plaine Morte View Point Package.

**Crans-Montana Mountain Resort** Winter season according to

**the cable car timetable**

Words can hardly describe the breathtaking view from the top of the Plaine Morte (3,000 m). With imposing 4,000 m summits visible both near and far, this flat glacier is a wonder to observe with its soft powder-covered surface in winter and scarred ice with its little lakes in summer. After observing the delightful scenery, take a break at the restaurant and enjoy a traditional cheese fondue.

**Services included for FIT and groups**

- Return cable car ticket
- Lunch: to choose between a cheese fondue lunch at the Plaine Morte restaurant or a three-course menu at Les Violettes restaurant

Category	FIT	Groups
Adults	CHF 110	CHF 88
Children (from 6 to 16 years old)	CHF 90	CHF 72
Piccolo (under 6 years old)	CHF 20	CHF 16



## St-Léonard’s Underground Lake.

**Thyon Région** Daily from mid-March to end of October

St-Léonard’s subterranean lake is nestled in the Rhone Valley in the heart of the Swiss Alps. Around 300 metres long, this is the largest natural underground lake in Europe which can be explored by boat. You’ll meet your guide at a depth of 30 metres under the vineyards and join him or her aboard a large rowing boat to start your journey. Enjoy the peace of this amazing place during a 30 min boat trip on the crystal-clear water.

**Services included for FIT and groups**

- Guided tour of the Lake

Category	FIT	Groups
Adults	CHF 12	CHF 10
Children (from 10 to 16 years old)	CHF 6	CHF 5
Piccolo (under 6 years)	Free	Free



## Grande Dixence dam – Thrill package.

**Thyon Région** Daily from mid June to mid October

The Grande Dixence dam, the world’s highest gravity dam. Discover the inside of this giant infrastructure with a “sound and light” guided tour. Then try a 700 m-long ZipLine in the void, taking you along this concrete colossus.

**Services included for FIT and groups**

- Guided tour of the dam
- 1 zipline descent
- 1 cableway ride in both directions

Summer season	FIT	Groups
Adults	CHF 34	CHF 30
Children	CHF 17*	CHF 15*
Piccolo (from 4 years old)	n/a	n/a

\*If the weight is more than 40 kg, the price for the child is CHF 18.- (child is then not accompanied by his/her parent).



## Top of the 4 Vallées.

**Nendaz** Mid-December - April / July - August

Head to the top of the Mont-Fort, the highest mountain in the 4 Vallées culminating at 3,330 m/10,925 ft above sea level. Enjoy a breath of the unequalled fresh air as well as the breath-taking view and a delicious meal on the summit.

**Services included for FIT and groups**

- 1 overnight
- Return cable car ticket to the Mont-Fort
- Lunch in a high altitude restaurant
- Transfers by car to the cable car station and return

Summer season	FIT	Groups
Adults	CHF 179.50	CHF 166.50
Children	CHF 87.50	CHF 82.50
Piccolo	CHF 47	CHF 31
Winter season	FIT	Groups
Adults	CHF 217.50	CHF 205.50
Children	CHF 109	CHF 103
Piccolo	CHF 62	CHF 44



## Viewpoint & Alpine Gourmet.

**Région Dents du Midi - Champéry**

18.12.2021 - 10.04.2022 & July - October

Experience the best of Switzerland with a memorable adventure in the Région Dents du Midi! Start by taking the quaint mountain train to Champéry, then climb aboard our famous red and white cable car for an exciting ride to the top of La Croix-de-Culet (1,962 m/6,437 ft) in under five minutes. Enjoy 360° panoramic views over the Alps and a delicious traditional cheese fondue from a vast, sunny terrace at the top.

**Services included for FIT and groups**

- Cable car transfer
- Fondue

Summer season	FIT & Groups
Adults	CHF 36,85*
Children	CHF 21**
Piccolo	CHF 8***
Winter season	FIT & Groups
Adults	CHF 40*
Children	CHF 30**
Piccolo	CHF 8***

\*Extra cost for a fine gourmet menu: CHF 16

\*\*Extra cost for a fine gourmet menu: CHF 5.25

\*\*\*No fine gourmet menu



## Panoramic trains.

In Valais, spectacular scenery frames every train journey. Some historical transport facilities have even been redesigned to offer panoramic views of the mountains. The choice is thrilling. The Mont-Blanc Express, for example, takes you all the way to Chamonix, at the foot of Mont Blanc; the Glacier Express links St. Moritz/Davos and Zermatt via

magnificent alpine landscapes; and the Gornergrat Bahn, Europe’s highest open-air cog railway, takes you from Zermatt to the Gornergrat, a high panoramic ridge with glorious views of the Matterhorn. All you have to do is relax in comfort in your seat and take advantage of your journey to enjoy some of the scenic highlights of Valais.

### Gornergrat Viewpoint Package. (Riffelhaus 1853 & 3100 Kulmhotel)

**Gornergrat Bahn** All year round

Enjoy a 3-course lunch at 3100 m altitude in the Kulmhotel Gornergrat with a spectacular view of the Matterhorn and many other famous four thousand-metre peaks surrounding Zermatt.

**Services included for FIT and groups**

- Train ride: Zermatt – Gornergrat – Riffelberg – Riffelalp – Zermatt
- 3-course menu at the 3100 Kulmhotel Gornergrat (also possible at the Hotel Riffelhaus 1853 on the Riffelberg)

December - April	FIT	Groups
Adults	CHF 122	CHF 101
May	FIT	Groups
Adults	CHF 144	CHF 118
June - August	FIT	Groups
Adults	CHF 166	CHF 135
September - October	FIT	Groups
Adults	CHF 148	CHF 122

### Cogwheel Experience with best view to the Matterhorn.

**Gornergrat Bahn** All year round

Anyone who wishes to become acquainted with the most picturesque facet of the Alpine world quickly realizes one thing - seeing the Gornergrat at first hand is a must. Enjoy a spectacular view of the Matterhorn and many other famous four thousand-metre peaks surrounding Zermatt.

**Services included for FIT and groups**

- Train ride: Zermatt - Gornergrat - Zermatt
- In 2021/2022, the ticket from Zermatt to Gornergrat entitles the holder to enter the Multi-media experience world “Zoom the Matterhorn” at the top of the Gornergrat.

November - April	FIT	Groups
Adults	CHF 88	CHF 61.60
June - August	FIT	Groups
Adults	CHF 126	CHF 88.20
September - October / May	FIT	Groups
Adults	CHF 110	CHF 77

### Igloo lunch fondue for two.

**Gornergrat Bahn** February - mid April

Enjoy a breathtaking trip on the rack railway to Gornergrat, then head for Rotenboden station and take a 10-15-minute walk to the igloo village where the legendary fondue will be served with a hot drink. Back on foot to either Rotenboden or Riffelberg and train ride back to Zermatt.

**Services included for FIT and groups**

- Train ride: Zermatt - Gornergrat - Zermatt
- Welcome tea/coffee or mulled wine “Glühwein”
- Cheese fondue (outdoors)

Category	FIT & Groups
Adults (price per person)	CHF 99
1/2 Fare Card, GA, STP	CHF 68
Children	CHF 41
Piccolo	n/a

### Meet the traditional blacknose sheep.

**Gornergrat Bahn** End of June - September

Who hasn’t seen them before, the famous, black-nosed sheep from Zermatt? Their spiralled horns, black faces and ears and white woolly coat - which is special in itself. During the months from June to September these sheep graze on the Gornergrat. They wear collars that can be tracked with GPS and every visitor will be able to locate them. The shepherdess who keeps her eye on them will be there too and can give you lots of interesting facts about these animals and their environment. Guided walks available upon request.

**Services included for FIT and groups**

- Train ride: Zermatt - Gornergrat - Zermatt
- Discover the blacknose sheep in the Gornergrat area via GPS
- The shepherdess Deborah will give the guests exciting information about the sheep breed from Tuesday to Sunday between 1.30pm and 3pm

November - April	FIT	Groups
Adults	CHF 88	CHF 61.60
June - August	FIT	Groups
Adults	CHF 126	CHF 88.20
September - October / May	FIT	Groups
Adults	CHF 110	CHF 77



### Sledging fun (Rotenboden to Riffelberg).

**Gornergrat Bahn** Depending on weather conditions,

open from Christmas to Easter, short-term changes possible

Experience winter with a difference having lots of fun and enjoying yourself on the Rotenboden – Riffelberg, the highest toboggan run in Switzerland. The 1.6 km ride from Rotenboden (2815 m a.s.l.) down to Riffelberg (2582 m a.s.l.) lasts about 10 min. Trains from Riffelberg up to Rotenboden depart every 10 min. Toboggans are available for hire at the Rotenboden station.

**Services included for FIT and groups**

- Train ride: Zermatt – Rotenboden – Zermatt
- Incl. unlimited tobogganing between Rotenboden – Riffelberg
- From 11am to 4pm
- Toboggan rental: CHF 10

Pass	FIT & Groups
Adults	CHF 56
Tax, GA, SHFC, STP	CHF 43
Children	CHF 29
Piccolo	Free

### Glacier Express.

**Glacier Express** All year round

From Zermatt and the Matterhorn, this panoramic trip goes over 291 bridges and through 91 tunnels as it crosses the Swiss Alps to St. Moritz. The journey from St. Moritz to Zermatt (or vice versa) takes a whole day and on the Glacier Express will be a truly culinary experience! Catering for your guests should be booked in advance. Lunch or dinner (on the afternoon trains) is served directly at passengers’ seats. The on-board kitchen believes in the importance of authentic Swiss produce, whenever possible, from the regions through which the Glacier Express travels.



Itinerary	FIT		Groups	
	2. class	1. class	2. class	1. class
St. Moritz-Zermatt	CHF 152	CHF 268	CHF 106.40	CHF 187.60
St. Moritz-Brig	CHF 114	CHF 201	CHF 79.80	CHF 140.80
Chur-Zermatt	CHF 119	CHF 210	CHF 83.40	CHF 147
Chur-Brig	CHF 81	CHF 143	CHF 56.80	CHF 100.20

Seat	11.12. - 13.05.2022	14.05. - 23.10.2022
1 <sup>st</sup> and 2 <sup>nd</sup> class	CHF 39	CHF 49
Excellence class	CHF 420	
Meals		
2-course menu	CHF 40	
3-course menu	CHF 47	
4-course menu	CHF 52	

## Mont-Blanc Express: Martigny–Chamonix.

**Mont-Blanc Express** All year round

Pass through mysterious forests and cross plunging gorges as you travel along-side vertiginous rock faces between Martigny and Chamonix, while admiring the majestic mountain scenery of the unspoiled Trient Valley.

**Services included for FIT and groups**

- Train ride: Martigny – Chamonix and back

Category	FIT & Groups
Day pass Mont-Blanc Express	CHF 49
Children	CHF 28
Piccolo	CHF 9



## Zoo des Marécottes. The highest in Europe.

**Mont-Blanc Express** Every day in summer

**From Wednesday until Sunday from autumn to spring**

Discover most representatives of our indigenous Alpine fauna in a purely natural setting in the middle of a larch forest: deer, marmots, foxes, lynx, bears and many other species in their own habitat covering 35,000 m².

**Services included for FIT and groups**

- Train ride: Martigny – Les Marécottes and back
- Zoo admission

Category	FIT & Groups
Adults	CHF 24
Children	CHF 14
Piccolo	CHF 7



## Verticalp Emosson.

**Mont-Blanc Express** Spring to autumn

A spectacular and unforgettable experience during which three unique rail systems take you to the amazing natural site of Emosson facing the panorama of the legendary Mont-Blanc: a funicular, a mini-funicular and a panoramic train.

**Services included for FIT and groups**

- Train ride: Martigny to Le Châtelard and back
- Round trip on one of the steepest funiculars in the world
- Round trip on the panoramic train facing the Mont-Blanc
- Round trip on the mini-funicular from the bottom to the top of the Emosson dam

Category	FIT & Groups
Adults	CHF 59
Children	CHF 32
Piccolo	CHF 19



## Culture and tradition.

Valais is the cradle of a fascinating cultural heritage; castles, fortifications, museums and many other ancient buildings bear witness to a rich history. This is also a land of living traditions, such as those surrounding cattle of the local Hérens breed. The cows naturally lock horns to establish a hierarchy within the herd, and compete in organised cow fights with the victor crowned “queen”. Visitors can also see these typical cattle during the ascent to the mountain pastures in

spring and the descent in autumn. The St Bernard Museum and Dogs offer a chance to learn all about this iconic breed from Valais and to see dogs and puppies close-up in the kennel. In the side valleys, visitors may well hear the sound of an alphorn, echo of a time when these instruments served as a means of communication. A busy calendar of music festivals, exhibitions and theatre performances reflects the canton’s openness to the world and its joie de vivre.

## Yodelling workshop with Aletsch Glacier view.

**Aletsch Arena** 04.06.2022 - 23.10.2022

**& 03.06.2023 - 22.10.2023**

Originally, yodelling enabled herders to communicate across large distances. Join a taster course and discover how clear a yodel call can sound at the energy spots on the Moosfluh, Bettmerhorn and Eggishorn where the positive effect of the Earth’s radiation is especially strong! You’ll find out how relaxing and liberating yodelling actually is with the added advantage of creating a close connection to this unique landscape.

**Services included for groups**

- 2 hours yodelling workshop with a yodelling expert
- Glacier view, (exclusive cable car ticket, f.e. Aletsch Explorer)

Category	Groups
Adults	CHF 20
Children	CHF 15
Piccolo	CHF 15

## Tour of the historic Villa Cassel.

**Aletsch Arena** 04.06.2022 - 23.10.2022

**& 03.06.2023 - 22.10.2023**

Explore the historic Villa Cassel, its exhibitions and UNESCO World Heritage Alpine garden. This traditional mansion once belonged to a rich English banker who went to Riederalp to recuperate from burnout. Nowadays it is the home of the nature conservation association, Pro Natura Aletsch.

**Services included for FIT and groups**

- Entrance to the melting Aletsch glacier and climate change exhibition
- Individual tour through the public areas of the historic Villa Cassel
- Entrance to the Alpine garden
- Not included: eventual cable car ticket to include the Aletsch Glacier view

Category	FIT & Groups
Adults	CHF 8
Children	CHF 8
Piccolo	Free

## World of Alphorns.

**Nendaz** All year round

Learn how to play the Alphorn, a traditional Swiss instrument and with some luck, you could be blowing your first notes. After having discovered more about Nendaz’ heritage, enjoy a tasting of local products.

**Services included for FIT and groups**

- 2 overnights with breakfast
- 1-hour Alphorn class with a professional
- Tasting of local products

Summer season	Groups
Adults	CHF 185
Children	CHF 95
Piccolo	CHF 22.50
Winter season	Groups
Adults	CHF 215
Children	CHF 110
Piccolo	CHF 22.50

## Stockalperschloss – impressive palace.

### Brig Simplon

**Summer: 01.05.-31.10.2022, except Monday (for FIT)**

**9.30am/10.30am/1.30pm/2.30pm/3.30pm/4.30pm\***

**Winter: 03.01.-25.04.2022 & 02.01.-24.04.2023,**

**only Tuesday (for FIT)**

**For groups, possible every day throughout the year.**

Characterized by a four-story main building, three towers and a three-story arcade courtyard, the square towers with gilt onion domes are named Kaspar, Melchior and Balthasar, which is understood to be an allusion to the three wise men. In his day, 17th century, Kaspar Stockalper was the most brilliant early capitalist in the world. Explore his Palace during a fascinating tour.

(\*only June-September)

#### Services included for FIT

- Guided tour through the castle (approx. 1h) in D

#### Services included for groups

- Guided tour through the castle (approx. 1h) in D/FR/EN/IT

Category	FIT	Groups
Adults	CHF 8	CHF 6.40
Children	CHF 3	CHF 6.40
Piccolo	Free	Free



## Goldrush in Gondo. Gold panner for a day.

### Brig Simplon 15.06.-15.10.2022 on fixed dates

Gold-bearing gravel banks have been lying in the Zwischbergental river for many millennia. Long-forgotten, this gold treasure has a beautiful light yellow, shiny colour. With shovel and gold pan at the ready, what is probably the last gold washer from Gondo will take you on a search for this yellow metal – just waiting to be found and carried home.

#### Services included for FIT and groups

- Visit to the gold mine
- Gold panning on the creek
- Lunch (Valais platter)
- Services accompanied by a guide (German. Other languages on request.)
- For groups, possible every day throughout the summer (June – mid-Oct.)

Category	FIT & Groups
Adults	CHF 99
Children	CHF 79
Piccolo	Free

## Ride the Little Simplon Express.

### Brig Simplon For groups: All year round

The “Little Simplon Express” tourist train takes you past Brig and Naters’ most beautiful attractions during its 30-minute tour, during which you will hear explanations about buildings and the history. Can be privatized for groups all year-round. Runs each day of the week during high season (July - August) for FITs.

#### Services included for FIT

- Ride the “Little Simplon Express” in D

#### Services included for groups

- Ride the “Little Simplon Epxress” in D/F/E/I/NL

Category	FIT	Groups
Adults	CHF 6	CHF 14.40
Children	CHF 3	CHF 7.20
Piccolo	Free	Free

## Visit the museum.

### Barryland All year round

Visit Barryland, learn about the history of the St. Bernard dogs through an interactive exhibition and meet the dogs. The museum is a great spot for animal lovers of all ages who would like to experience the history of Switzerland’s national dog while getting a chance to greet these lovable canines.

#### Services included for FIT and groups

- Museum admission

Category	FIT	Groups
Adults	CHF 9	CHF 8
Children	CHF 5	CHF 4
Piccolo	Free	Free



## Lunch at the museum restaurant.

### Barryland All year round

**Timing: 10.30am - 3pm**

After working up an appetite, discover the museum’s excellent “Café de Barry” restaurant which offers its own unique, delicious take on local Valais cuisine.

#### Services included only for groups

- 2-course meal or 3-course meal (two options to choose from when making the booking)

#### Packages

- Museum visit, “Meet and Greet” and 3-course lunch (2h)

**Depending on hygiene regulations and/or the presence of the dogs, the availability of this product may vary.**

2-course lunch	FIT	Groups
Adults	CHF 26	CHF 24
Children	CHF 18	CHF 16
Piccolo	CHF 8	CHF 6
3-course lunch	FIT	Groups
Adults	CHF 32	CHF 30
Children	CHF 19	CHF 17
Piccolo	CHF 12	CHF 10

## Barryland experience Packages.

### Barryland All year round

**Timing: 10.30am - 3pm**

Offer your group a unique opportunity to interact with the dogs and a certified dog trainer. This activity is suitable for families and adults of all ages and fitness levels who wish to get to know this fantastic breed. No more than 15 people per group.

#### Services included for FIT and groups

- Small packages: Museum visit and “Meet and Greet”
- Large packages: Museum visit, “Meet and Greet” and 3-course lunch

**Depending on hygiene regulations and/or the presence of the dogs, the availability of this product may vary.**

**Due to the Covid situation, there are different conditions for the product "meet & greet". It is only possible to watch the dogs through a window. The visitors watch our dog keeper in action with our Saint Bernard's: playing, learning or being hair brushed.**

Small Package	FIT	Groups
Adults	CHF 21	CHF 18
Children	CHF 17	CHF 14
Piccolo	Free	Free
Large Package	FIT	Groups
Adults	CHF 45	CHF 42
Children	CHF 33	CHF 30
Piccolo	CHF 12	CHF 10





# Gastronomy.

When it comes to gastronomy, Valais is a land as generous as the rays of sunshine that caress its vineyards, allowing it to produce sublime wines. An essential dish on any visit to Valais is Raclette: the multiple servings of melted cheese, accompanied by potatoes, cornichons and silverskin onions, make for the most convivial of meals. Another typical local

speciality showcases some of the finest Valais produce: the Assiette Valaisanne (Valais platter), consisting of Valais dried meat IGP, Valais cured ham IGP, Valais cured bacon IGP, cured sausage, Valais rye bread AOP and Raclette du Valais AOP cheese. Another highlight: delicious swiss cheese fondues, to be enjoyed with a glass or two of fine Valais wine.

## Typical Swiss stay in Aletsch Arena.

### Aletsch Arena

Enjoy a typical Swiss dinner such as fondue or Raclette du Valais and stay in a traditional wooden chalet-style hotel in the car-free villages of the Aletsch Arena. Explore the treasures of this UNESCO world heritage site with a local hiking guide.

#### Services included for groups

- 1 overnight with breakfast in a traditional Swiss chalet hotel in a single or double room (Standard room, 3\* hotel, valley. Different prices for mountain hotel.)
- 1 typical Swiss dinner
- Half day hiking guide
- Aletsch Explorer for all cable cars and train Brig-Fiesch
- Visitors' tax

Standard Hotel Valley Summer (18.04.-16.12.22 & 15.04.-15.12.2023)	Groups
Adults in double room	CHF 177.30
Adults in single room	CHF 188.30
Children (same room as the adults)	CHF 116.15
Piccolo (same room as the adults)	CHF 40
Standard Hotel Valley Winter (18.12.20-11.04.21 & 17.12.21-24.04.22)	Groups
Adults in double room	CHF 218.30
Adults in single room	CHF 263.30
Children (same room as the adults)	CHF 136.65
Piccolo (same room as the adults)	CHF 40



## Fondue Gondola.

### Saas-Fee/Saastal Several dates during winter

If you are looking for a romantic evening program for you and your loved ones, we have just the thing for you. Saas-Fee's views of the mountains by night and its atmosphere-filled lighting promise a magical experience that is sure to linger in your memory for many years to come.

#### Services included for FIT and groups

- Cable car ride
- Fondue dinner, dessert, tea and wine

Category	FIT & Groups
Adults	CHF 70
Children	CHF 35
Piccolo	CHF 35

## A scenic Valaisan village & culinary delights.

### Leukerbad – Albinen May - October

The scenic mountain village of Albinen belongs to the “Inventory of Swiss Heritage Sites”. It has preserved its unique character with its old wooden houses and barns darkened by the sun. Join a herbal hike (optional) and get to know the wild plants and fruits that Hannelore and Sasha transform into culinary delicacies including a stop at their rustic Godswaergjistubu guest-house and the enchantment of a true, grandmother-style 3-course menu.

#### Services included for FIT

- Grandmother-style 3-course menu at the unique Godswaergjistubu guesthouse
- Public round trip transfer (30 min)

#### Optional service (flat rate from 1 to 10 PAX)

- Herbal hike through Albinen village and surroundings, accompanied by an English-speaking guide: CHF 150

Category	FIT
Adults	CHF 30
Children	CHF 30
Piccolo	Free

## Visit to the Corbyre mountain dairy farm.

### Crans-Montana Mountain Resort Summer season

The mountains have provided people with food and other wonders for centuries. Visit one of Crans-Montana's most popular mountain dairy farms, where the owner will be delighted to tell you about rural life and the cheese-making process. After a small apéritif and tasting of the farm's products, a short walk will lead you back to the nearby restaurant where lunch will be served.

#### Services included for FIT and groups

- Return cable car ticket
- Tour of the cheese-making facilities accompanied by the owner
- Cheese and wine tasting
- Three-course lunch at the Arnouva Restaurant
- Guided walk to the mountain dairy farm (**only for groups**)

Category	FIT	Groups
Adults	CHF 65	CHF 52
Children (from 6 to 16 years old)	CHF 45	CHF 36
Piccolo (under 6 years)	n/a	n/a



## Mountain pasture visit and cheese tasting.

### Thyon Région

#### Each Wednesday between end of June and end of August.

Discover how an Alpine pasture works and how cheese is made. You will be able to see each step of production, followed by a chance to taste different cheeses.

#### Services included for FIT and groups

- Explanatory visit with a local guide
- Cheese tasting (serac, raclette), and 1 drink

Category	FIT	Groups
Adults	CHF 30	CHF 26
Children (from 6 to 16 years old)	CHF 15	CHF 13
Piccolo (under 6 years)	n/a	n/a

- Available in summer FIT and group (until mid-September)





## Adventure/alpinism.

Valais loves sunshine and the sun loves Valais: 300 days of sunshine a year provide ideal conditions for all kinds of outdoor activities. When temperatures climb in summer, the air is soothingly fresh at higher altitudes: another good reason for a spot of climbing or mountaineering, or even tackling the ascent of one of the 45 peaks higher than 4,000 m/13,000 ft in

Valais. The mighty glaciers provide a unique spectacle: visitors can even take a few steps on the bluish ice on an excursion with a UIAGM Mountain Guide. Adrenalin seekers will enjoy exploring Valais from the skies on a paragliding flight, or tackling one of the 18 via ferratas (fixed rope routes) scattered around the canton.

### Ranch Le Caribou.

**Thyon Région** Daily between end of June and end of August.

Perched 2,000 metres above sea level, Thyon's Ranch Le Caribou is an ideal location and offers the perfect starting point for horse rides in the Valais Alps. With different packages available such as combining an out-ride with a visit to authentic mountain pastures, this is also an opportunity to taste local produce.

#### Services included for FIT

- 1-hour ride
- 1 terroir dish ("assiette valaisanne" – a Valais selection of cheeses and cold meats) and 1 drink

Category	FIT*
Adults	CHF 52
Children	CHF 52
Piccolo	n/a

\*Maximum 5 people at the same time. Also available for groups. Prices on request.  
Not available for people weighing over 90 kg.

### My first 4,000-metre peak (13,000 ft).

**Saas-Fee/Saastal** July - September

Though an altitude of 4,027 m/13,212 ft may sound daunting, almost anyone can safely reach the summit of the Allalin with the help of a UIAGM Mountain Guide. Cross the magical 4,000-metre mark (13,000 ft) for the first time in your life and experience something truly uplifting. Book your mountaineering adventure now and benefit from our fantastic Allalin deal.

#### Services included for FIT and groups

- 2 overnights with breakfast
- SaastalCard (Cable cars and Postbus incl.)
- Metro Plus Ticket
- UIAGM Mountain Guide
- Mountain equipment (excluding mountain boots)
- Visitors' tax

Category	FIT	Groups
Adults	CHF 496	CHF 409
Children	n/a	n/a
Piccolo	n/a	n/a

Flat rate for 1-3 Pax with UIAGM Mountain Guides, on request.

### Alpine Canyon.

**Saas-Fee/Saastal** All year round on request

This spectacular guided tour in the upper part of the Fee Gorge takes you across suspension bridges, ladders and steel ropes. Duration 2h, ankle-high trekking boots are required.

#### Services included for FIT and groups

- UIAGM Mountain Guide
- Equipment (harness, via ferrata set, helmet and gloves)

Category	FIT	Groups
Adults	CHF 112	CHF 92
Children (from 10 years old)	CHF 112	CHF 92
Piccolo	n/a	n/a

Flat rate for 1-3 Pax CHF 432.

### Glacier Tour.

**Saas-Fee/Saastal** December - April and June - October

Tour with crampons (summer) or snowshoes (winter) from Längfluh on the Fee Glacier, roped tour with a UIAGM Mountain Guide. Duration 3h, approx. one hour on the glacier. Ankle-high waterproof trekking shoes, winter clothing, gloves, beanie, sunglasses and sun cream are required.

#### Services included for FIT

- Cable car ticket Saas-Fee – Längfluh return
- UIAGM Mountain Guide
- Equipment (Harness, snowshoes/crampons)

#### Services included for groups

- According to FIT
- Possible in May on request

Category	FIT	Groups
Adults	CHF 198	CHF 157
Children (from 8 years old)	CHF 171	CHF 135.50
Piccolo	n/a	n/a

Flat rate for 1-3 Pax: CHF 564 (without cable car ticket).



### Via Ferrata Jegihorn.

**Saas-Fee/Saastal** July - September

Following your overnight stay, head up to Kreuzboden to climb the highest Via Ferrata in the Western Alps to the summit of the Jegihorn. Thrills guaranteed as you cross the Via Ferrata bridge! Duration: around 6 hours.

#### Services included for FIT (3 - 4 PAX) and groups (5 - 6 PAX)

- 1 overnight with breakfast
- SaastalCard (Cable cars and Postbus incl.)
- UIAGM Mountain Guide
- Equipment (harness, via ferrata-set, helmet)
- Visitors' tax

Category	FIT	Groups
Adults	CHF 281	CHF 198
Children (from 10 years old)	CHF 237.50	CHF 162
Piccolo	n/a	n/a

### Aletsch glacier hike.

**Aletsch Arena** 04.06.2022 - 23.10.2022

& 03.06.2023 - 22.10.2023

**FIT: every day / Groups: every day on request**

Discover the 20 km/12.4 mi long Great Aletsch Glacier with a local UIAGM Mountain Guide, the longest glacier in the Alps and part of the UNESCO world heritage. The day tour starts in Fiesch, walking to the Gletscherstube hut at Lake Märjelen, the real starting point for the glacier experience, hiking 2 hours on the Great Aletsch Glacier.

#### Services included for FIT and groups

- Guided tour of between 7-8 hours (~6 hours walking time), led by an experienced professional mountain guide
- Equipment (harness, snowshoes/crampons)
- Excl. cable car ticket

Category	FIT	Groups
Adults	CHF 81	CHF 81
Children (minimum age 10)	CHF 63	CHF 63



### Paragliding.

**Aletsch Arena** All year round

Circle like an eagle above the Aletsch Arena and admire the impressive Aletsch Glacier as well as 4,000 m/13,000 ft peaks including the Jungfrau, Matterhorn and Mont Blanc from a different angle. In Fiesch-Eggishorn, a paragliding and hang-gliding mecca, newcomers can take to the air, safely secured, in a tandem flight with an experienced professional.

#### Services included for FIT

- 30 minute paragliding flight
- Pictures can be purchased after the flight, exclusive cable car ticket

Category	FIT
Adults	CHF 162
Children	CHF 162
Piccolo (minimum age 4)	CHF 162



## Wine tourism.

With 5,000 ha/12,355 ac of vineyards, Valais is Switzerland's leading winegrowing region, accounting for one third of Swiss production. The terraced vineyards extend from Martigny to Salgesch in Upper Valais and often feature dry-stone walls, built using expertise passed down for generations: skills listed by UNESCO as part of the Intangible Cultural Heritage of Humanity. Valais is also home to some of Europe's highest vineyards, located at an altitude of 1,100 m/3,609 ft

at Visperterminen. The favourable climate – dry and sunny – and the diversity of soils enable nearly 60 different grape varieties to flourish. Alongside robust red wines, produced with indigenous grape varieties, winemakers also favour Pinot Noirs, the main grape variety in the well-known Dôle blend. The range of white wines extends from light and delicate Chasselas (or Fendant) to specialities including late-harvest wines that are full-bodied and complex.

### Wine-tasting and raclette in Varen.

#### Leukerbad – Varen All year round

Varen is a scenic wine-making village above the Rhone Valley. It is well-known for its viticulture and so-called “butterfly wine”. Enjoy a unique wine-tasting and raclette and savour the unusual flavours of six different, locally produced wines from the vintner's cellars.

##### Services included for FIT

- Tasting of six different wines
- All-you-can-eat raclette

##### Services included for groups

- According FIT-services
- Private Round trip transfer (30 min)
- Accompanied by an English speaking guide

Category	FIT	Groups
Adults	CHF 64	CHF 84
Children	CHF 32	CHF 42
Piccolo	Free	Free

### Wine experience in Les Celliers de Sion.

#### Les Celliers de Sion All year round

This indoor package will introduce you to the most famous Valais wines and traditional dishes: local wines, cheeses and meat from our mountain cows – the pure flavours of a unique region. Discover our history and all you need to know about wine-making thanks to our short movie and guided tour. Take advantage of your visit to Les Celliers de Sion to stroll through our vineyards and immortalize the extraordinary views in your mind.

Daily from 10am to 8pm for groups (10 to 60 pax).  
For FIT starting from 2 pax. Friday to Sunday on request.  
Duration: 1h15.

##### Services included for FIT and groups

- Guide
- Film and exhibition
- Three wines per person to choose during the tasting workshop: Specialty wines, Terroir & Grand Cru or Exceptional vintages
- Valais platter and regional aperitif

Category	FIT & Groups
Adults	CHF 40
Children	CHF 20



### Wine experience in the vineyards.

#### Les Celliers de Sion April - October

Prepare to be breathless, be it for the view, the wines or the food that you will be able to enjoy during this outdoor experience! The purpose of this experience at Les Celliers de Sion is to relax as you let yourself be guided through tastings of wines and local products in a modern centre and a traditional gatehouse where you'll discover the many contrasting aspects of Valais. Magnificent wines and traditional dishes from the region, all in a honeymoon setting, what more could one ask for?

Daily for groups (10 to 60 pax).  
Duration: 3-4h.

##### Services included for groups

- Three wines per person to choose during the tasting workshop: Specialty wines, Terroir & Grand Cru or Exceptional vintages
- Transfer by bus to our Guérîte Brûlefer and walk in the heart of the vineyard (10 min.)
- Traditional Wine & Dine at the Guérîte Brûlefer
- Walk or bus back to Les Celliers de Sion
- A guide will be with you during the entire experience

Category	Groups
Adults	CHF 119
Children	CHF 59,50



### Vineyards by e-bike.

#### Les Celliers de Sion April - October

Explore our vineyard on our Kalkhoff electric bikes and enjoy a majestic view of the Rhone Valley, as well as delicious local products and wines from our estate. If you are a nature lover looking for a peaceful and calm experience, choose our “picnic” option; or if you'd like to spend an extraordinary day in the heart of Valais discovering the area's gastronomic and winegrowing knowledge, choose our three-course “meal” option. Picnic: Monday to Sunday, 10am - 1.30pm. Duration: 4h30, from 10 to 25 km/6 to 15.5 mi. Gatehouse meal: Thursday to Sunday at 10am, 11am and 12pm. Duration: 5h30, from 15 to 25 km/9 to 15.5 mi. Children under 16 without a category M Swiss driving licence may not take part.

##### Services included for FIT and groups (max 15 PAX)

- An electric bike with helmet
- A GPS App (please come with your mobile phone charged and – if possible – a USB cable). Several routes are available
- A picnic or meal with water
- Wine to take home

Category	FIT & Groups (Adults)
Picnic	CHF 79
Gatehouse Meal	CHF 109



### Sion & Wine Tour.

#### Sion Annual, except on Sundays

Follow your guide on a walk through the heart of Sion - a subtle blend of historical discovery and wine-related delights. The tour includes the visit of three historical monuments located in Sion's old town (place of Planta, Sorcerer's Tower, Roman baths) and usually closed to the public; along with a tasting of five local wines and a selection of cold cuts and cheeses.

##### Services included for FIT and groups

- 2h guided tour & tasting

Category	FIT	Groups
Adults	CHF 52.70	CHF 49.60
Children	CHF 26.40	CHF 26.40
Piccolo	CHF 4.60	CHF 4.60

### Sierre/Salgesch, a journey for the senses.

#### Sierre/Salgesch 01.03. - 30.11.2022/23, except Monday & Tuesday

After a short walk through the quiet city of Sierre you will arrive at the Château de Villa, a historic estate where a choice of Valais wines awaits you for a tasting. You will then get the chance to taste five different types of raclette cheese. After this culinary highlight, it is time to make your way along the wine trail from Sierre to Salgesch (approx. 1h). You can then round off your journey with a visit to the wine museum.

##### Services included for FIT and groups

- Wine tasting and all-you-can-eat raclette lunch followed by an apricot sorbet dessert
- For the children a child menu will be served
- Admission to the Salgesch Wine Museum
- Accompaniment by an English speaking guide (**only for groups**)

Category	FIT	Groups
Adults	CHF 58.10	CHF 86.95
Children	CHF 24.60	CHF 24.60
Piccolo	CHF 12.85	CHF 12.85



Wellness – thermal baths.

The thermal springs of Valais are inexhaustible sources of life-giving energy, full of precious minerals drawn from ancient rocks. Millions of litres of water gush from the depths of the mountains every day, at temperatures of more than 40 degrees. The thermal spa resorts of Leukerbad, Brigerbad and Breiten are renowned for the quality of their springs, and offer visitors the opportunity to relax and enjoy the soothing benefits

of the warm water in an idyllic setting at the heart of the Valais Alps. The choice of facilities, wellness treatments and activities is wide, from water aerobics and yoga sessions to relaxing massages – making Valais the ideal destination for a refreshing and invigorating escape.

Relaxing bath at the largest thermal spa resort in the Alps.

Leukerbad All year round

Leukerbad is the largest and highest thermal spa resort in the Alps also well known for its 500-year-old bath culture. Every day 3.9 million litres of thermal water emerge from the mountain with the temperature of up to 51°. Enjoy a relaxing bath in one of the three public spas while savouring the picturesque mountain panorama – 365 days a year.

Services included for FIT and groups

- 3h admission ticket for a public thermal spa (Leukerbad Therme, Walliser Alpentherme\* or Therme51°)

Category	FIT	Groups
Adults	CHF 21.25	CHF 20
Children	CHF 16.60	CHF 15.60
Category	FIT	Groups
Sauna (naked area)	CHF 34	CHF 34
Romain-Irish Baths	CHF 59.50	
Champagne breakfast incl. Daypass	CHF 44	CHF 44
Champagne breakfast incl. Daypass. Children	CHF 16	CHF 16

\*Walliser Alpentherme: No access for children under 8 years old.  
\*\*Therme 51°: only for FIT.

Brigerbad – a thermal bath oasis.

Brig Simplon All year round

Discover the biggest outdoor thermal bath site in the Alps with its indoor and outdoor thermal baths and spacious wellness centre featuring saunas, steam baths, “Kneipp” basins as well as massages and well-being pools enabling wonderful moments of relaxation.

Services included for FIT and groups

- 3h admission ticket for thermal baths

Category	FIT	Groups
Adults	CHF 21*	CHF 13.30*
Children	CHF 16*	CHF 9.10*
Piccolo	Free	Free

\*Prices are subject to change

Yoga Break.

Veysonnaz May - October

Take some time for yourself and practice yoga with a professional teacher in an Alpine forest, along a special yoga path. Discover more about Veysonnaz’ cultural heritage with a tasting of regional products.

Services included for FIT and groups

- 2 overnights
- 2-hour yoga class with a professional
- Tasting of local products

Category	FIT	Groups
Adults	CHF 223	CHF 205
Children	CHF 111.50	CHF 102.50
Piccolo	n/a	n/a

Mountain biking/cycling.

With 2,000 km/1,243 mi of well-marked cycle routes and 1,500 km/932 mi of mountain bike trails, Valais is heaven for enthusiasts: one vast adventure playground. From the valley floors to the mountain summits, from the vineyards and the orchards to the dramatic alpine passes, there are routes to suit all tastes and levels of ability. The region also boasts 13 pumptracks and 26 downhill mountain bike runs in 6 bikeparks, offering

endless variety. Beginner or expert trails, blue, red or black runs, technical passages or flowing sections, natural or artificial jumps, rocks or roots: the flow trails of Valais promise high thrills and boundless pleasure. And thanks to more than 100 cable cars and other lifts, mountain bikers enjoy carefree access to the most exciting terrain.

Discovery Trail Leukerbad.

Leukerbad July - November

This area in the heart of the Valais has always been a biking spot for locals, but now the word has got out its popularity is increasing exponentially! Twelve signposted routes and a spectacular 220 km/137 mi long network with challenging and tricky trails await you. With our 1 Day Mountain & Spa Pass, biking fun is guaranteed from the Torrent down to the Rhone Valley, with a warm bubble bath in Leukerbad as a reward.

Services included only for FIT and groups

- Cable car ticket for Gemmi & Torrent (bike transport)
- Mountain bike rental
- 3-hour admission ticket for a public spa (Leukerbad Therme, Walliser Alpentherme or Therme 51°)

Category	FIT	Groups
Adults	CHF 91.90	CHF 89.00
Children	CHF 62.70	CHF 60.60

Optional upgrade

Category	FIT	Groups
Mountain bike guide 1 Day (6 hours)/1-8 Pax	CHF 315	CHF 315
Mountain bike guide Day (3 hours)/1-8 Pax	CHF 189	CHF 189

Extendable for several days with discount.

Valais Alpine Bike.

Crans-Montana, Leukerbad, Unterbäch, Grächen, Brig, Blatten,

St-Luc, Grimentz July - September

Multi-stage tour with daily luggage transport. Top 7 trails in the Upper and Central Valais. 80 km/50 mi of single trails. Nature and panoramas.

Stages

- Stage 1: Arrival in Crans-Montana
- Stage 2: Crans-Montana – Leukerbad
- Stage 3: Leukerbad – Unterbäch
- Stage 4: Unterbäch – Grächen
- Stage 5: Grächen – Brig
- Stage 6: Brig – Blatten
- Stage 7: Blatten – St-Luc
- Stage 8: St-Luc – Grimentz | Departure

Other variants with less stages. Information on request.

Services included for FIT

- 7 overnights with breakfast in mid-range hotels (mostly certified bike hotels)
- Daily luggage transport
- Public transport and cable cars
- Detailed travel documents & GPS files to download

Low Season	FIT
Double Room°	CHF 1,259.00**
Single Room*	CHF 1,518.00**
High Season	FIT
Double Room°	CHF 1,325.00**
Single Room*	CHF 1,584.00**

°Indicative rate per person sharing a double room, excluding visitor’s tax.  
\*Person staying in a single room or in a double room with single use, excluding visitor’s tax.  
\*\*Prices are subject to change.



# Rhone Route Cycling Holidays.

Oberwald, Brig, Sion, Martigny, Montreux, Morges, Geneva

May - October 2022

The Rhone-Route connects – between Oberwald and Geneva – completely different types of landscapes: In Goms, the landscape is alpine and the route consists for the most part of downhill rides. In Brig, the Rhone valley widens. The Rhone-Route offers scenic and cultural variety and the flat route profile makes it perfect for casual cyclists as well.

### Services included

- 5 nights with breakfast in 4 or 3-stars hotels (see prices of both categories in the table below)
- Daily luggage transport
- Detailed travel documents & GPS files to download

### Stages

- Stage 1: Oberwald/Ulrichen – Brig
- Stage 2: Brig – Sion
- Stage 3: Sion – Martigny
- Stage 4: Martigny – Montreux/Vevey
- Stage 5: Montreux/Vevey – Morges/Nyon
- Stage 6: Morges/Nyon – Geneva

Low Season	Hotel ****	Hotel ***
Double Room*	CHF 738.35*	CHF 603.95
Single Room**	CHF 981.10	CHF 784.55
High Season	FIT	
Double Room*	CHF 780.35	CHF 637.55
Single Room**	CHF 1,023.10	CHF 818.15

\*Indicative rate per person sharing a double room, excluding visitor's tax.

\*\*Person staying in a single room or in a double room with single use, excluding visitor's tax.



## Guest cards.

Come just as you are and enjoy a carefree holiday, taking advantage of the facilities at your resort free of charge. Thanks to the local visitor cards, it has never been so easy to discover the treasures of Valais!

Guest cards are usually automatically given to guests from the first overnight stay (hotel or apartment/ chalet rental).

### Aletsch Arena – guest card

- Free admission to various cultural activities.
- Reduction on cable car tickets and various other activities.

alescharena.ch/visitor-card



### Saas-Fee/Saastal – Saastal Card

- In summer, as of the 1st overnight, free use of the cable cars in the Saas Valley (except Metro Alpin).
- Summer & winter: Postbus in the Saas Valley included.
- Summer & winter: Reduction of up to 30% on a total of 36 offers.

saas-fee.ch/saastalcard



### Leukerbad Card Plus (LBC+)

- 10% off passes to public thermal spas and for the Torrent and Gemmi cableways (all year round).
- Free access to the local shuttle and PostBus Leukerbad-Flaschen-Albinen / Leukerbad-Inden incl. Rumeling (all year round).
- Free access to the Sportarena Leukerbad: tennis, squash, badminton, etc. (summer only).

leukerbad.ch/stay/guest-card-lbc



### Région Dents du Midi – Multi Pass

Included from your 1st overnight stay.

- Free access to 22 mountain lifts for hikers.
- Free access to 6 inter-resort shuttles.
- 60 free activities with another 60 discounted activities.

regiondentsdumidi.ch/en/activity/summer/multipass



Hotel prices.

All prices per person in CHF, exclusive tourist tax.  
Group rate applies from 10 persons on.  
For groups from 10 persons on = tour leader free of charge for all services

Aletsch Arena					
Hotel	Room Type	Summer 18.04.2022 - 16.12.2022 15.04.2023 - 15.12.2023		Winter 17.12.2021 - 18.04.2022 16.12.2022 - 15.04.2023	
		GROUP	FIT	GROUP	FIT
Standard Valley (***.Q)	Single	94.-	113.-	109.-	131.-
	Twin/Double	79.-	95.-	89.-	107.-
	Double single use	138.-	166.-	158.-	190.-
	Triple	69.-	83.-	79.-	95.-
Superior Valley (****.Q)	Single	104.-	125.-	119.-	143.-
	Twin/Double	89.-	107.-	99.-	119.-
	Double single use	158.-	190.-	178.-	214.-
	Triple	79.-	95.-	89.-	107.-
Standard Mountain (**-.Q)	Single	95.-	109.-	170.-	184.-
	Twin/Double	84.-	98.-	125.-	139.-
	Double single use	140.-	168.-	230.-	258.-
	Triple	70.-	84.-	115.-	129.-
Superior Mountain (****.Q)	Single	155.-	165.-	170.-	184.-
	Twin/Double	110.-	120.-	140.-	150.-
	Double single use	180.-	200.-	230.-	258.-
	Triple	90.-	100.-	115.-	129.-
Halfboard	HB Standard 3-course			25.-	30.-
	HB Superior 4-course			38.-	40.-
Tourist Tax	Adult 3.50 CHF / Child 1.75 CHF				
Porterage	Cable Car - Hotel 4.- CHF, Valley-Mountain 8.- CHF one way				

Brig					
Hotel	Room Type	Low season 03.01.2021 - 11.06.2021 19.09.2021 - 17.12.2021 10.01.2022 - 11.06.2022		High season 12.06.2021 - 18.09.2021 18.12.2021 - 09.01.2022 12.06.2022 - 30.09.2022	
		GROUP	FIT	GROUP	FIT
Standard	Single	71.-	81.-	86.-	96.-
	Twin/Double	56.-	66.-	66.-	76.-
	Triple	51.-	61.-	61.-	71.-
Superior	Single	93.-	103.50	97.-	119.-
	Twin/Double	72.50	87.50	77.50	98.-
	Triple	72.-	82.50	82.50	92.50
Halfboard	Standard 3-course			GROUP/FIT 27.-	
	Superior 3-course			GROUP/FIT 29.50	
Tourist Tax	Adult 2.- CHF / Child 1.- CHF				

**Hotel categories**

Basic: \*\*  
Standard: \*\*\*  
Superior: \*\*\*sup. / \*\*\*\*  
Deluxe: \*\*\*\*sup. / \*\*\*\*\*

**Children Policy**

**6 – 15.99 years old** (additional bed with parents in twin room); 50% reduction  
**0 – 5.99 years old** (share-bed with parents in twin room); free of charge

Saas-Fee/Saastal					
Hotel	Room Type	Low season, June - Nov		High season, Dec- Apr	
		GROUP	FIT	GROUP	FIT
Standard	Single	75.-	90.-	100.-	120.-
	Twin/Double	65.-	80.-	86.-	106.-
	Triple	50.-	65.-	66.-	86.-
Superior	Single	95.-	110.-	120.-	140.-
	Twin/Double	85.-	100.-	100.-	120.-
	Triple	70.-	95.-	80.-	100.-
Deluxe	Single	140.-	155.-	180.-	200.-
	Twin/Double	110.-	125.-	140.-	160.-
	Triple	95.-	110.-	120.-	140.-
Halfboard	Standard 3-course			GROUP/FIT 30.-	
	Standard 4-course			GROUP/FIT 40.-	
Tourist Tax	Summer: Adult 7.- CHF/ Child 3.50 CHF				
	Winter: Adult 4.50 CHF/ Child 2.25 CHF				
Porterage	5.- CHF				

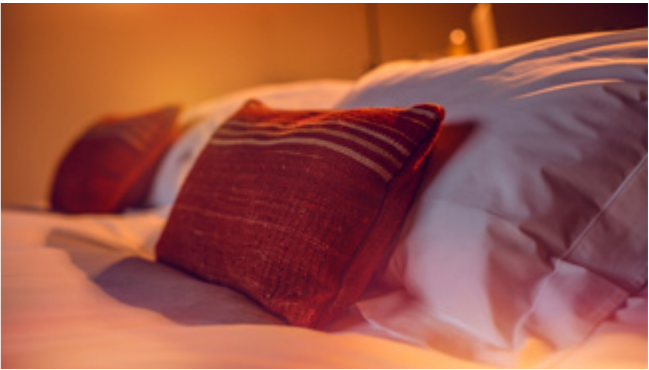
Leukerbad					
Hotel	Room Type	Summer 10.04.2021 - 16.12.2022 23.04.2023 - 15.12.2023		Winter 17.12.21 - 10.04.2022 16.12.22 - 23.04.2023	
		GROUP	FIT	GROUP	FIT
Standard	Single	75.-	95.-	85.-	105.-
	Twin/Double	65.-	85.-	75.-	95.-
	Triple	60.-	80.-	70.-	90.-
Standard own Thermal baths	Single	85.-	105.-	95.-	115.-
	Twin/Double	75.-	95.-	85.-	105.-
	Triple	70.-	90.-	80.-	100.-
Superior own Thermal baths	Single	119.-	139.-	119.-	139.-
	Twin/Double	92.50	112.50	92.50	112.50
	Triple	81.70	101.70	81.70	101.70
	Double single use (additional)		20.-		20.-
Deluxe own Thermal baths	Single		215.-		285.-
	Twin/Double		132.50		162.50
	Triple		110.-		125.-
Halfboard	Standard 3-course			25.-	30.-
	Superior 3-course			29.50	35.-
	Deluxe 3-course			65.-	75.-
Tourist Tax	Adult 6.- CHF / Child 3.- CHF				
Porterage	5.- CHF per way (exception Deluxe 5* Hotel free of charge)				



Thyon Région					
Hotel	Room Type	Summer, June - October		Winter, December - April	
		GROUP	FIT	GROUP	FIT
Standard	Single	105.-	105.-	140.-	120.-
	Twin/Double	80.-	85.-	90.-	90.-
	Triple	70.-	77.-	80.-	83.-
Superior	Single	120.-	140.-	150.-	165.-
	Twin/Double	85.-	90.-	100.-	100.-
	Triple	75.-	80.-	85.-	90.-
Halfboard	Standard 3-course			GROUP/FIT 35.-	
	Superior 3-course			GROUP/FIT 40.-	
Tourist Tax	Adult 3.20 CHF / Child 1.60 CHF				

Nendaz/Veysonnaz					
Hotel	Room Type	Summer 01.05.2022 - 30.11.2022		Winter Medium Season 01.12.2021 - 30.04.2022 01.12.2022 - 30.04.2023	
		GROUP	FIT	GROUP	FIT
Standard	Single	94.-	112.-	112.-	140.-
	Twin/Double	69.-	78.-	84.-	90.-
	Triple	55.-	64.-	63.-	72.-
Superior <sup>1</sup>	Single	191.-	210.-	295.-	324.-
	Twin/Double	117.-	129.-	169.-	186.-
	Triple	92.-	100.-	127.-	138.-
Halfboard	Standard 3-course			GROUP/FIT 35.-	
	Superior 3-course			GROUP/FIT 58.-	
Tourist Tax	Nendaz: Adult 3.50 CHF / Child 1.75 CHF Veysonnaz: Adult 3.- CHF / Child 1.50 CHF				

<sup>1</sup>Deluxe + 53.- CHF per room per night



Région Dents du Midi					
Hotel	Room Type	Summer, May - Nov		Winter, Dec - Apr	
		GROUP	FIT	GROUP	FIT
Basic	Single	76.-	95.-	97.-	122.-
	Twin/Double	54.-	68.-	76.-	95.-
	Triple	34.-	42.-	54.-	68.-
Standard	Single	88.-	110.-	110.-	138.-
	Twin/Double	67.-	84.-	88.-	112.-
	Triple	46.-	58.-	68.-	84.-
Superior	Single	120.-	145.-	160.-	180.-
	Twin/Double	68.-	85.-	90.-	115.-
	Triple	74.-	93.-	100.-	125.-
Deluxe	Single	221.-	277.-	268.-	335.-
	Twin/Double	158.-	198.-	184.-	230.-
	Triple	132.-	164.-	158.-	198.-
Halfboard	Standard 3-course			33.-	37.-
	Superior 3-course			50.-	56.-
Tourist Tax	Adult 3.- CHF / Child 1.50 CHF				

Timetable cableways and panoramic trains.

All timetables are subect to change

Aletsch Arena				
Departure	Winter 08.12.21 - 18.04.22	Spring 19.04.22 - 03.06.22	Summer 04.06.22 - 23.10.22	Autumn 24.10.22 - 07.12.22
Riederalp - Moosfluh	9am - 4.30pm	–	8.30am - 4.30pm	–
Bettmeralp - Bettmerhorn	9.30am - 4.30pm	9.30am - 1.30pm	8.30am - 4.30pm	Available for groups on request. Higher prices.
Fiescheralp - Eggishorn	9.30am - 4.10pm* (every 30 min)	–	8.55am - 4.55pm (every 30 min)	–
The cable cars from the valley to the plateau Mörel - Riederalp / Betten - Bettmeralp run 365 days a year, starting early morning (+- 6am) until late at night (11pm) at least every 1/2h.				

\*From 19. Dec - 18. April



Saas-Fee/Saastal		
Departure	Winter Saas-Fee: 01. Nov - 15. April Saas-Grund: Weekend before Christmas - Easter Monday	Summer 15. June - 15. Oct
Mittelallalin	8.30am - 4pm (every 20 min)	8am - 3.30pm
Hannig	9.15am - 4.15pm	9am - 4.30pm
Laengfluh	8.30am - 4.15pm (every 20 min)	9am - 4.15pm (every 40 min)
Spielboden	8.30am - 4.15pm	9am - 4.15pm
Kreuzboden	9am - 4pm	8am - 4.30pm*
Hohsaas	9am - 3.45pm	8.15am - 4.15pm**

\*Jul - Aug: 7.30am - 4.45pm

\*\*Jul - Aug: 7.45am - 4.30pm

Leukerbad		
Departure	Winter Mid Dec - Mid Apr	Summer End of June - Nov
Torrent	8.45am - 4pm	8.45am - 5.15pm
Gemmi	9am - 5pm	8.30am - 5pm (every 30 min)

Cran Montana Mountain Resort			
Departure	Winter	Summer Mid July - first week of September	Inter Season
Crans - Cry d'Er	7. Dec - 10. April 8.45am - 4.30pm	9am - 4.30pm	In alternance with Montana - Arnouva 9.15am - 4.30pm
Montana - Arnouva	mid Dec -10. April 8.45am - 4.30pm	10am - 4.30pm	In alternance with Crans - Cry d'Er 9.15am - 4.30pm
Violettes Express and Funitel Plaine Morte	mid Dec -10. April 8.45am - 4.30pm	9am - 4.30pm	11. April - mid July 9.15am - 4.30pm

Thyon Région			
Departure	Winter	Summer	Weekends only
Thyon 2000	10. Dec - 18. Apr 8.30am - 4.30pm	9. July - 21. Aug 9am - 4.30pm	27. Aug - 11. Sep 9am - 4.30pm
Les Collons	10. Dec - 18. Apr 8.30am - 4.30pm	9. July - 21. Aug 9am - 4.30pm	27. Aug - 11. Sep 9am - 4.30pm
Les Masses	10. Dec - 18. Apr 8.30am - 4.30pm	–	–

Nendaz/Veysonnaz			
Departure	Winter	Summer	Weekends only
Nendaz	10. Dec - 16. Apr 8.45am - 4.30pm / 8.45am - 4.45pm*	25. Jun - 31. Oct 9am - 4.30pm	18+19. Jun
Veysonnaz	10. Dec - 16. Apr 8.45am - 4.30pm / 8.45am - 4.45pm*	25. Jun - 21. Aug 9am - 4.30pm	27. Aug - 18. Sep 9am - 4.30pm
Siviez-Mont-Fort	3. Dec - 16. Apr 8.45am - 3.30pm / 8.45am - 3.45pm*	2. Jul - 21. Aug 8.30am - 4pm, (every 30 minutes)	27. Aug - 18. Sep 8.30am - 3.30pm (every 30 minutes)

\* From 18. Feb to end of season / last depart from Mont-Fort by cableways

Région Dents du Midi		
Departure	Winter	Summer
Champéry - Croix-de-Culet	8.30am - 4.30pm	8.45am - 4.45pm
Les Crosets - Mossettes	8.30am - 4.30pm	9am - 4.45pm
Morgins - Foilleuse	8.30am - 4.30pm	9am - 4.45pm

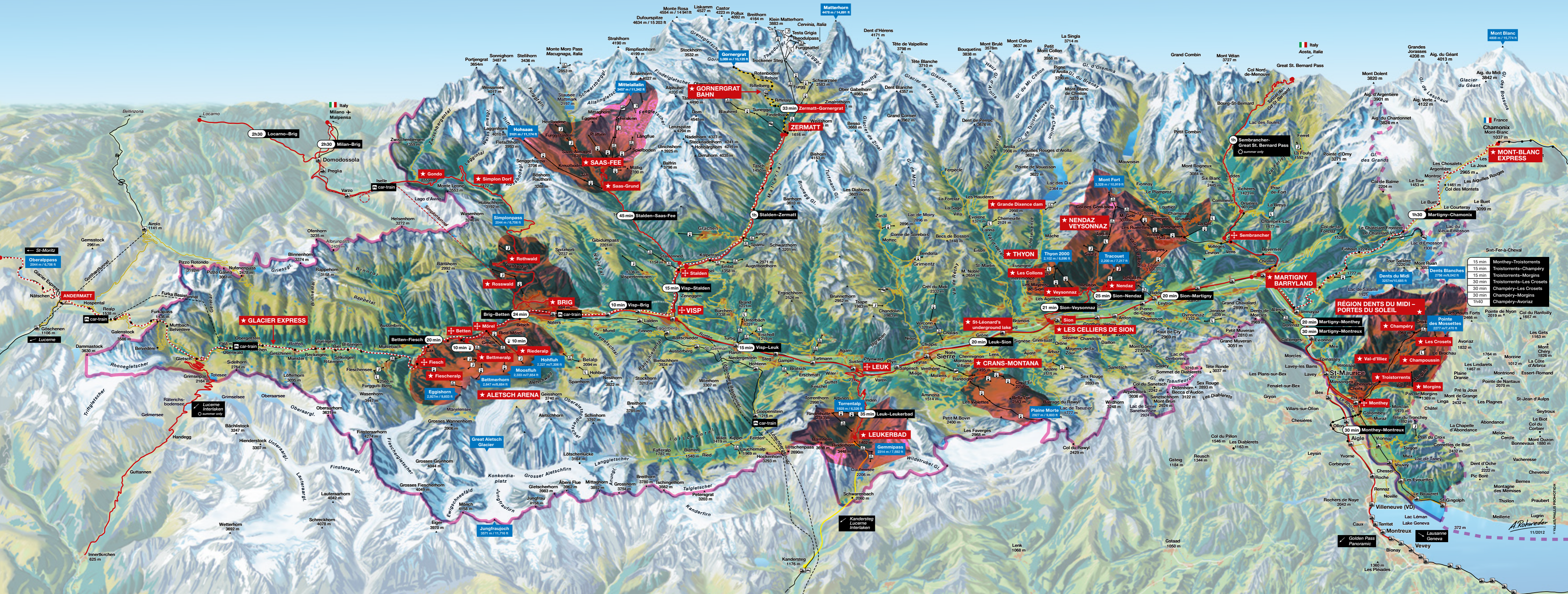
Glacier Express												
Winter 11.12.2021 - 13.05.2022		Summer 14.05.2022 - 23.10.2022					Winter 11.12.2021 - 13.05.2022		Summer 14.05.2022 - 23.10.2022			
902*	904	900	902*	904	906		923*	925	901	903*	905	907
8.52am	9.52am	7.52am	8.52am	9.52am	–	Zermatt	5.10pm	6.10pm	–	5.10pm	6.10pm	8.10pm
10.18am	11.18am	9.18am	10.18am	11.18am	2.18pm	Brig	3.50pm	4.50pm	1.40pm**	3.50pm	4.50pm	6.50pm
2.34pm	3.34pm	1.24pm**	2.34pm	3.34pm	6.58pm	Chur	11.05am	12.26pm	9.25am	11.05am	12.26am	2.16pm
4.37pm	5.37pm	–	4.37pm	5.37pm	9pm	St. Moritz	8.51am	9.48am	7.02am	8.51am	9.48am	–

\*Excellence Class

\*\*last stop

Gornergrat Bahn – The Matterhorn Railway				Mont-Blanc Express/TMR	
Departure	Winter	Summer	Inter Season	Departure	01.01-31.12
Zermatt	8.24am - 9.50pm (every 24 minutes)	8am - 9.50pm (every 24 minutes)	8.05am	Route Martigny (CH) – Chamonix (F)	7.18am - 7.18pm (every hour)
			8.35am		
			9.10am - 6.30pm (every 48 minutes)		
Gornergrat	7.35am	7.35am	7.42am	Route Chamonix (F) – Martigny (CH)	7.30am - 6.28pm (every hour)
	9.07am - 8.07pm (every 24 minutes)	8.43am	8.47am - 7.32pm (every 35 minutes)		
		9.07am - 8.07pm (every 24 minutes)			
The trains from Täsch to Zermatt run 365 days a year, starting at 5.55am until 9.55pm, every 20 minutes. Travel time: 12 min.					





15 min	Montney-Troistorrents
15 min	Troistorrents-Champéry
15 min	Troistorrents-Morgins
30 min	Troistorrents-Les Crosets
30 min	Champéry-Les Crosets
30 min	Champéry-Morgins
30 min	Champéry-Avoriaz

A. Rohrer  
11/2012  
© VALAIS WALLIS PROMOTION

© 2021 MRAG  
All rights reserved.

**MATTERHORN REGION AG**

Rue Pré-Fleuri 6  
1951 Sion (Switzerland)

+41 27 327 35 90  
[booking@matterhornregion.ch](mailto:booking@matterhornregion.ch)  
[matterhornregion.ch](http://matterhornregion.ch)



**MATTERHORN REGION**  
SWISS ALPS

