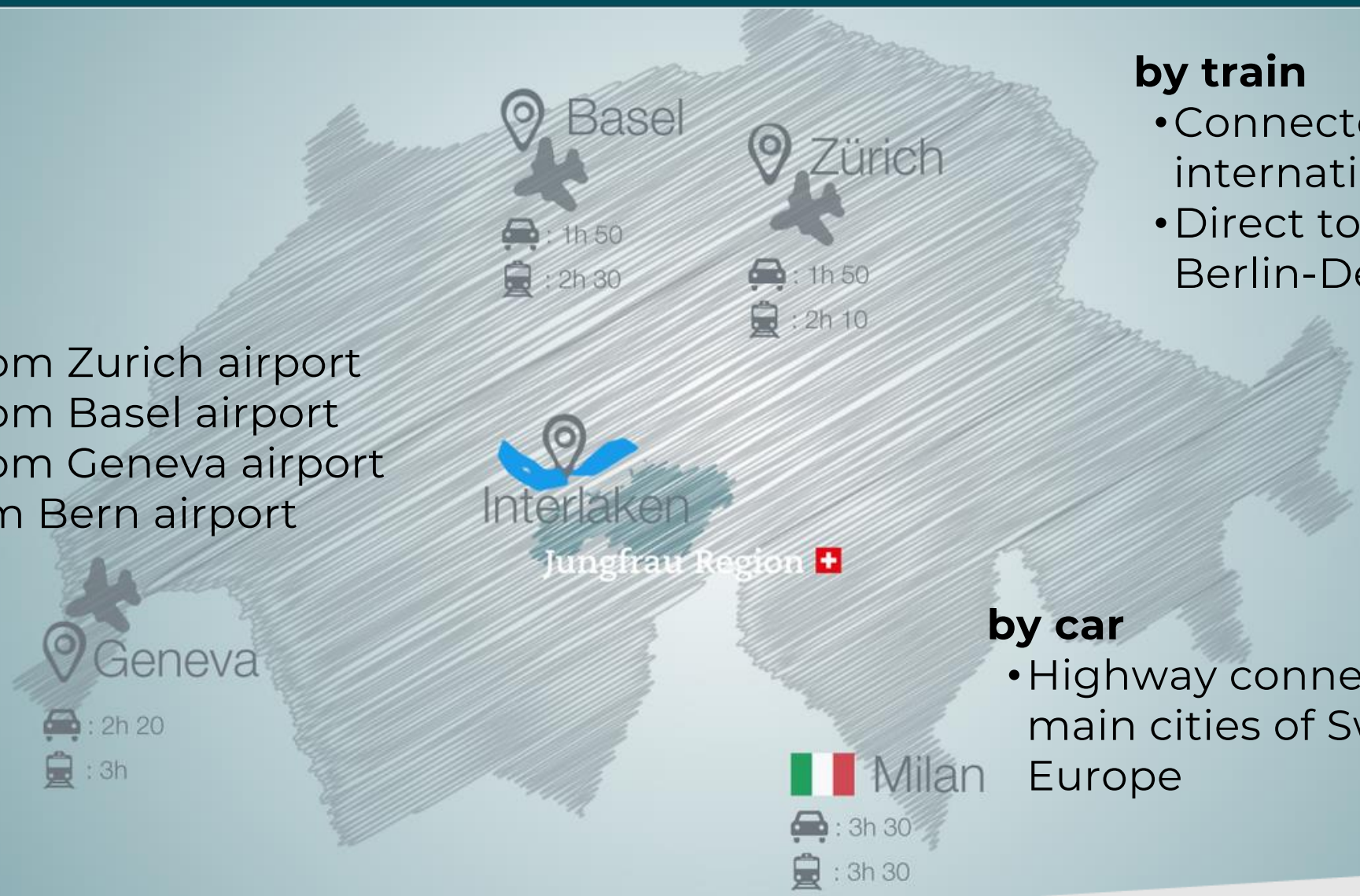




Grindelwald. Unique. Varied.

by plane

- 2 hrs from Zurich airport
- 2 hrs from Basel airport
- 3 hrs from Geneva airport
- 1 hr from Bern airport



by train

- Connected with international train stations
- Direct to Paris-TGV Lyria, Berlin-Deutsche Bahn

by car

- Highway connection to the main cities of Switzerland and Europe

Unique location in the heart of Switzerland

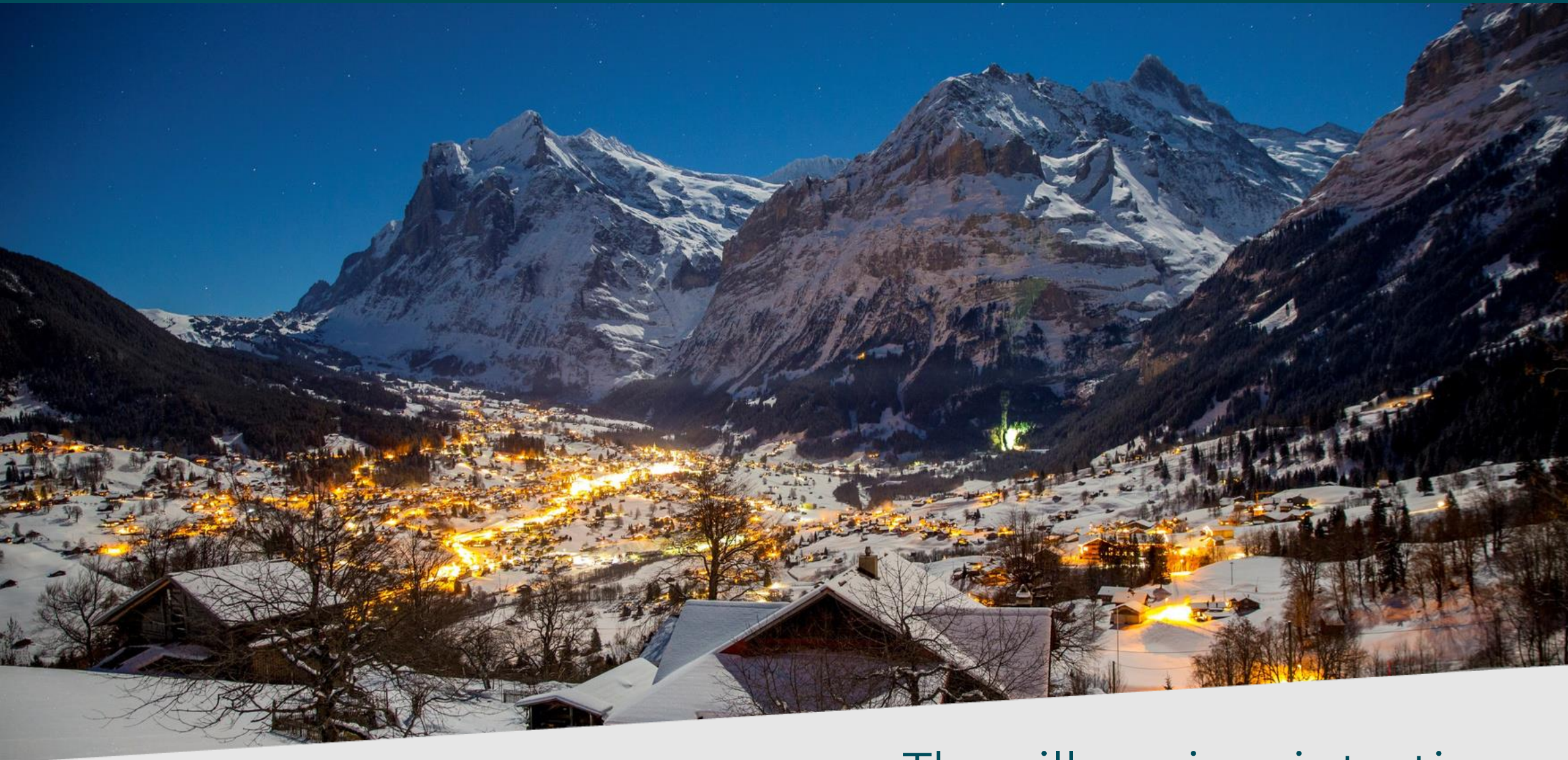
Sustenhorn 3504 m 11493 ft	Dammastock 3629 m 11903 ft	Galenstock 3583 m 11752 ft	Wetterhorn 3701 m 12143 ft	Schreckhorn 4078 m 13380 ft	Finsteraarhorn 4274 m 14019 ft	Eiger 3970 m 13026 ft	Mönch 4107 m 13475 ft	Jungfrau 4158 m 13638 ft	Grosshorn 3762 m 12339 ft	Breithorn 3782 m 12405 ft
-------------------------------	-------------------------------	-------------------------------	-------------------------------	--------------------------------	-----------------------------------	--------------------------	--------------------------	-----------------------------	------------------------------	------------------------------

Jungfrauoch – Top of Europe
3454 m 11333 ft





The village with
40 hotels from 1-5* & different apartments



The village in wintertime





Limousine chauffeur service

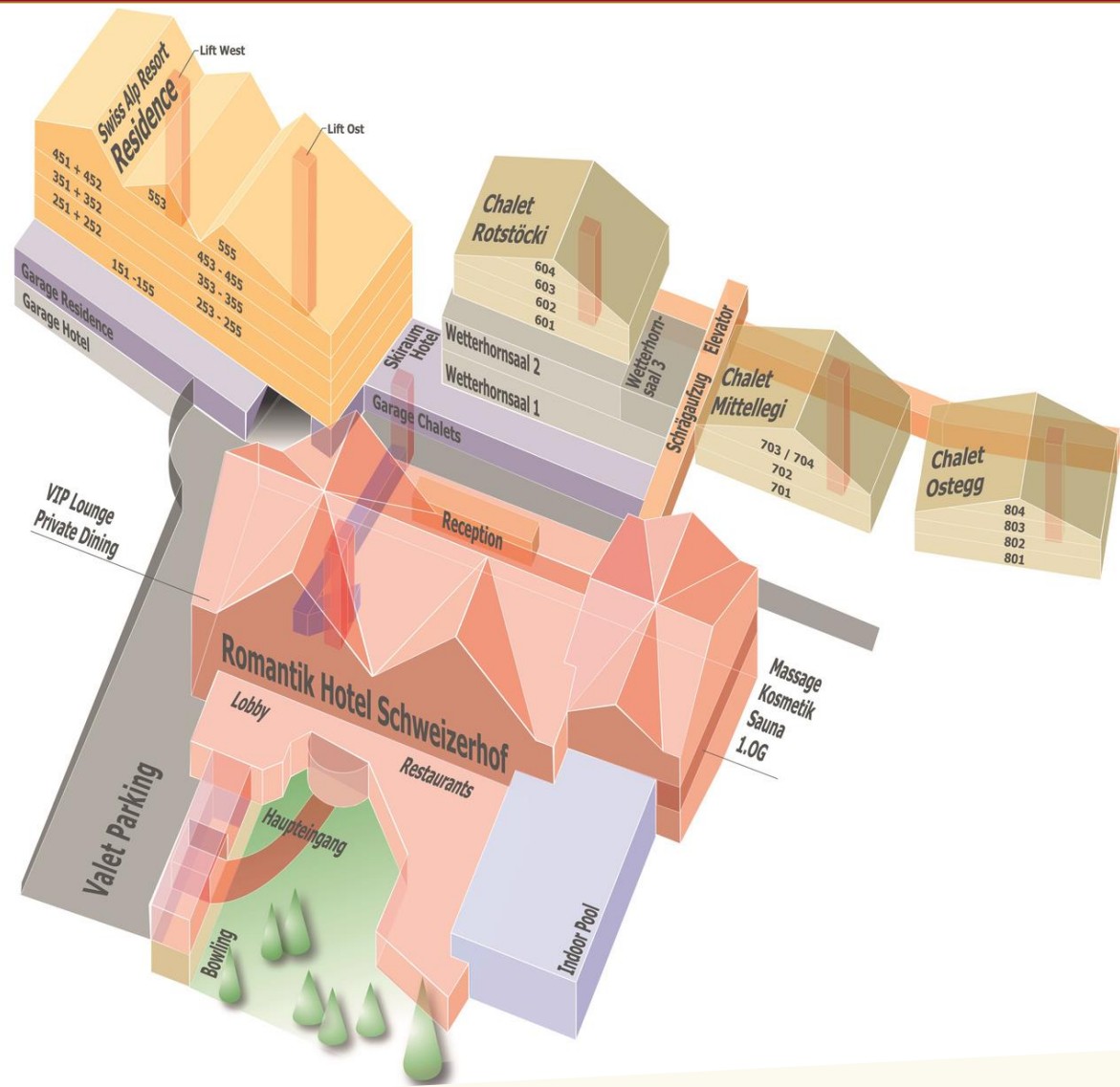


Train station pick-up service



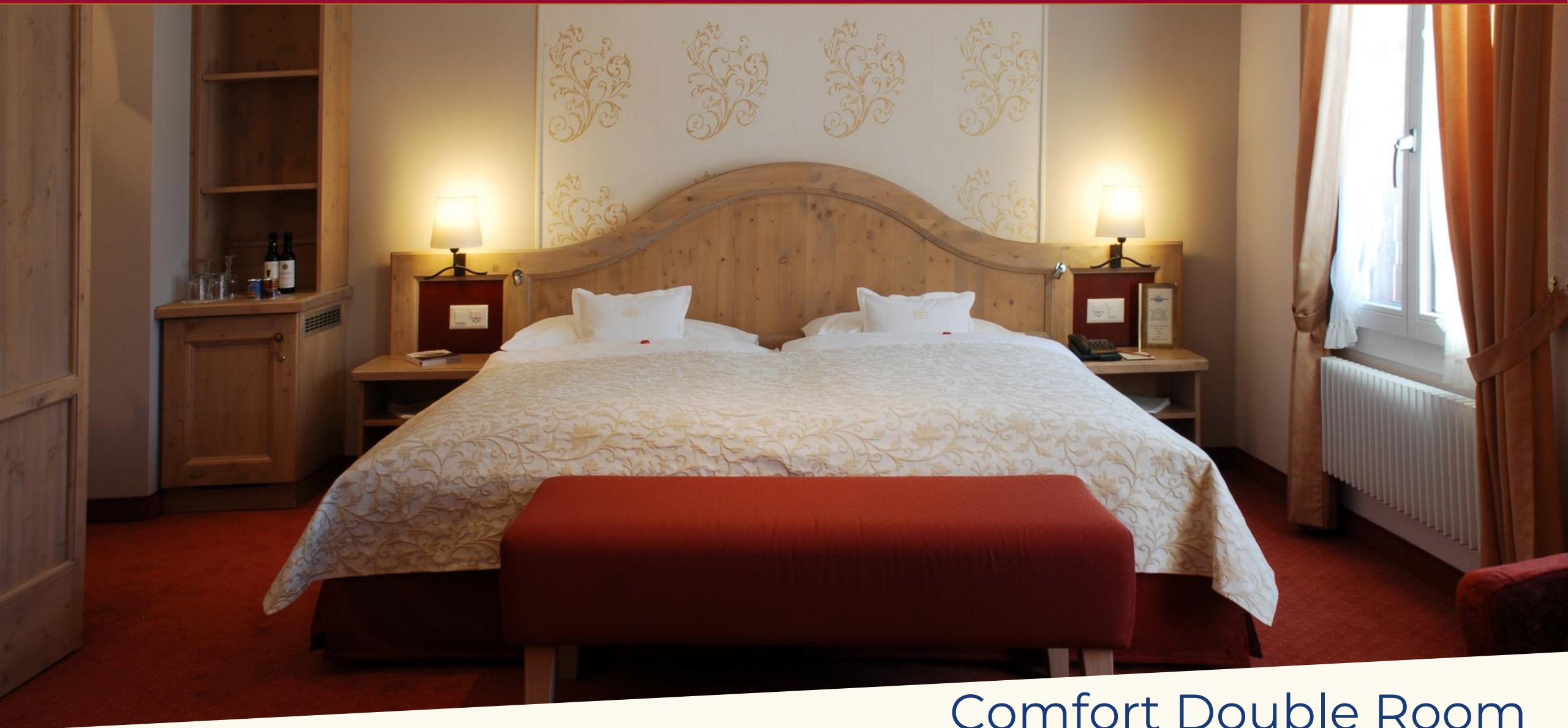


Hotel in chalet style established in 1892

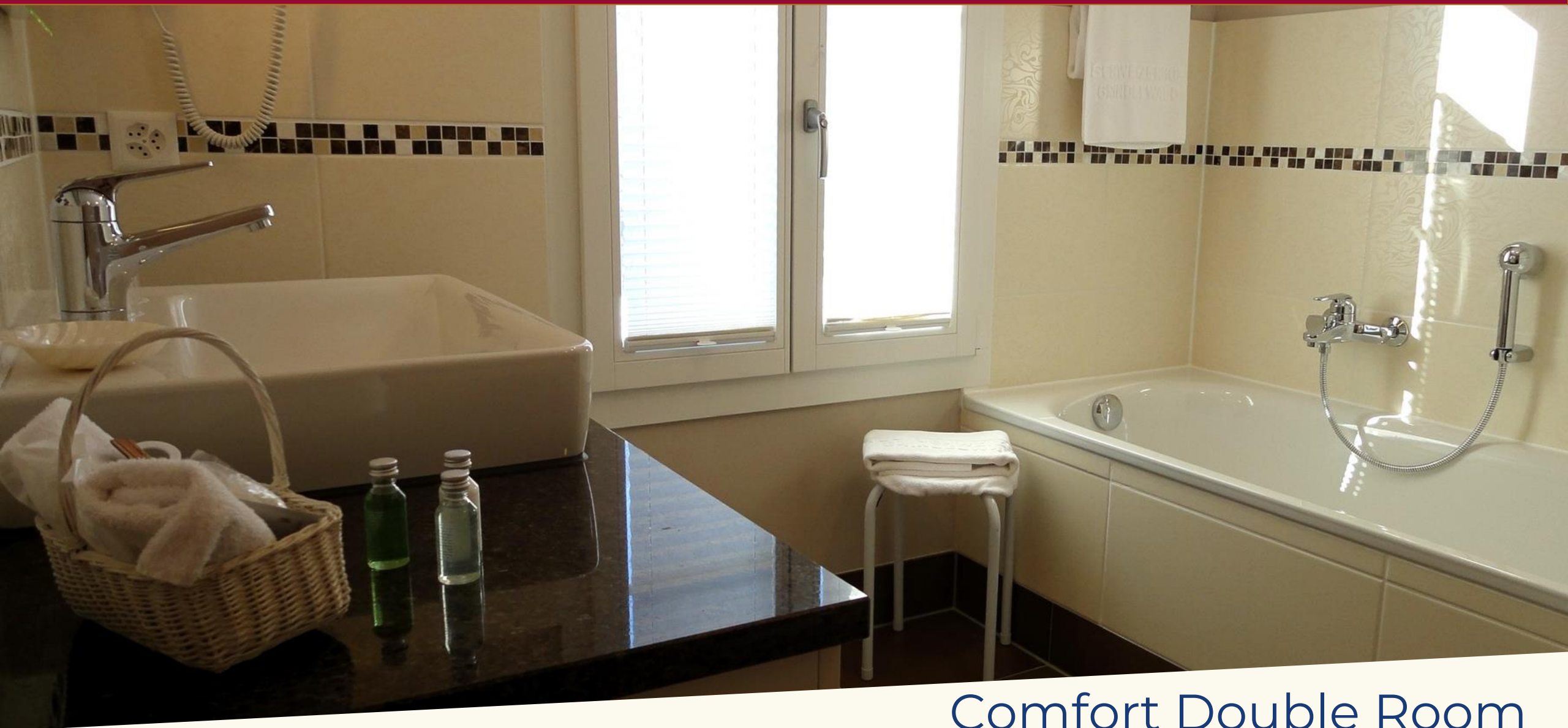




Unique view to the Eiger north face



Comfort Double Room
with view to the resort | 28-30 m² | 2 to 3 guests



Comfort Double Room
with view to the resort | 28-30 m² | 2 to 3 guests



Superior Double Room
with Eiger view | 28-30 m² | 2 to 3 guests



Superior Double Room
with Eiger view | 28-30 m² | 2 to 3 guests



Superior Double Room
with Eiger view | 28-30 m² | 2 to 3 guests



Junior Suite
with Eiger view | 35-50 m² | 2 to 3 guests



Junior Suite
with Eiger view | 35-50 m² | 2 to 3 guests



Junior Suite
with Eiger view | 35-50 m² | 2 to 3 guests



Junior Suite
with Eiger view | 35-50 m² | 2 to 3 guests



Junior Suite
with Eiger view | 35-50 m² | 2 to 3 guests



Single Room
with view to the resort or to the Eiger | 18 m²



Single Room
with view to the resort or to the Eiger | 18 m²



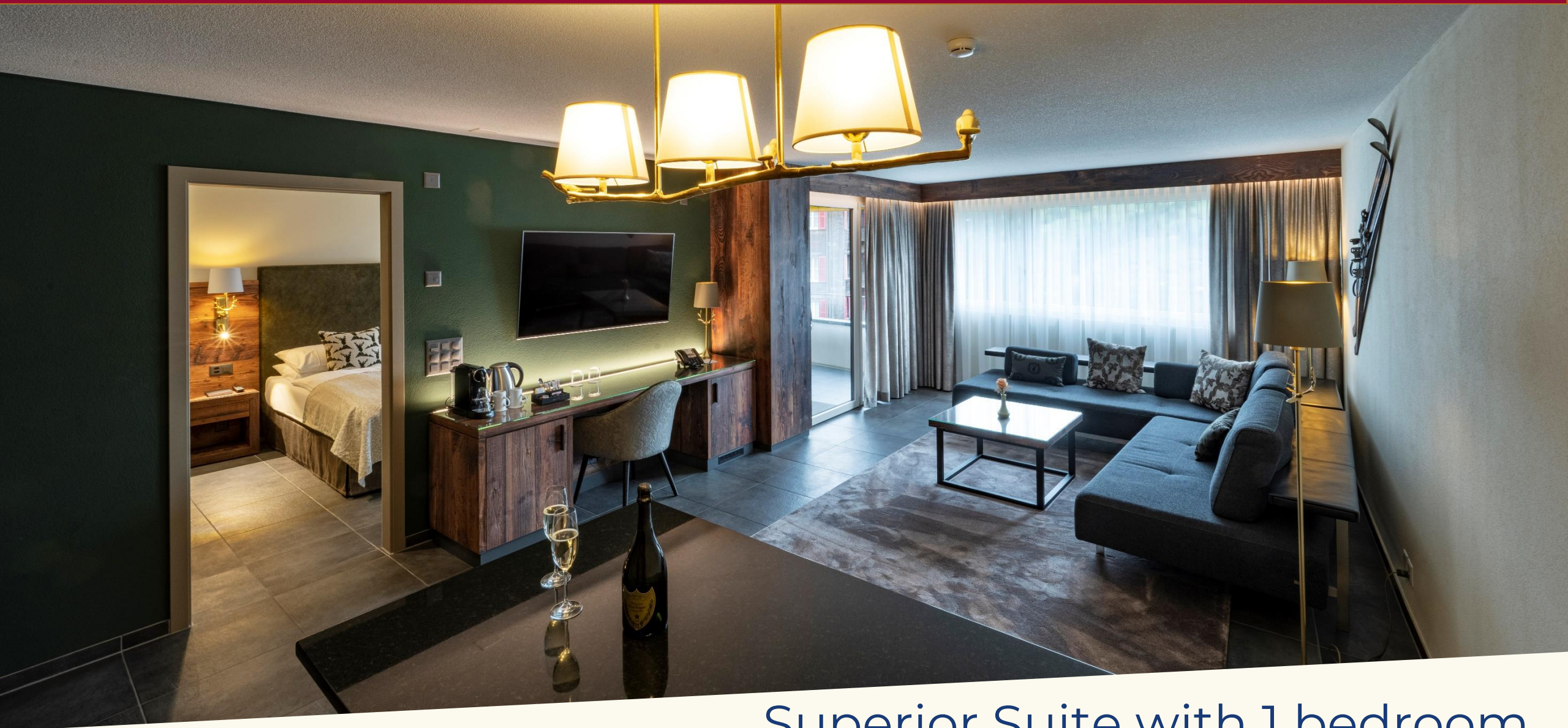
Grand Chalet



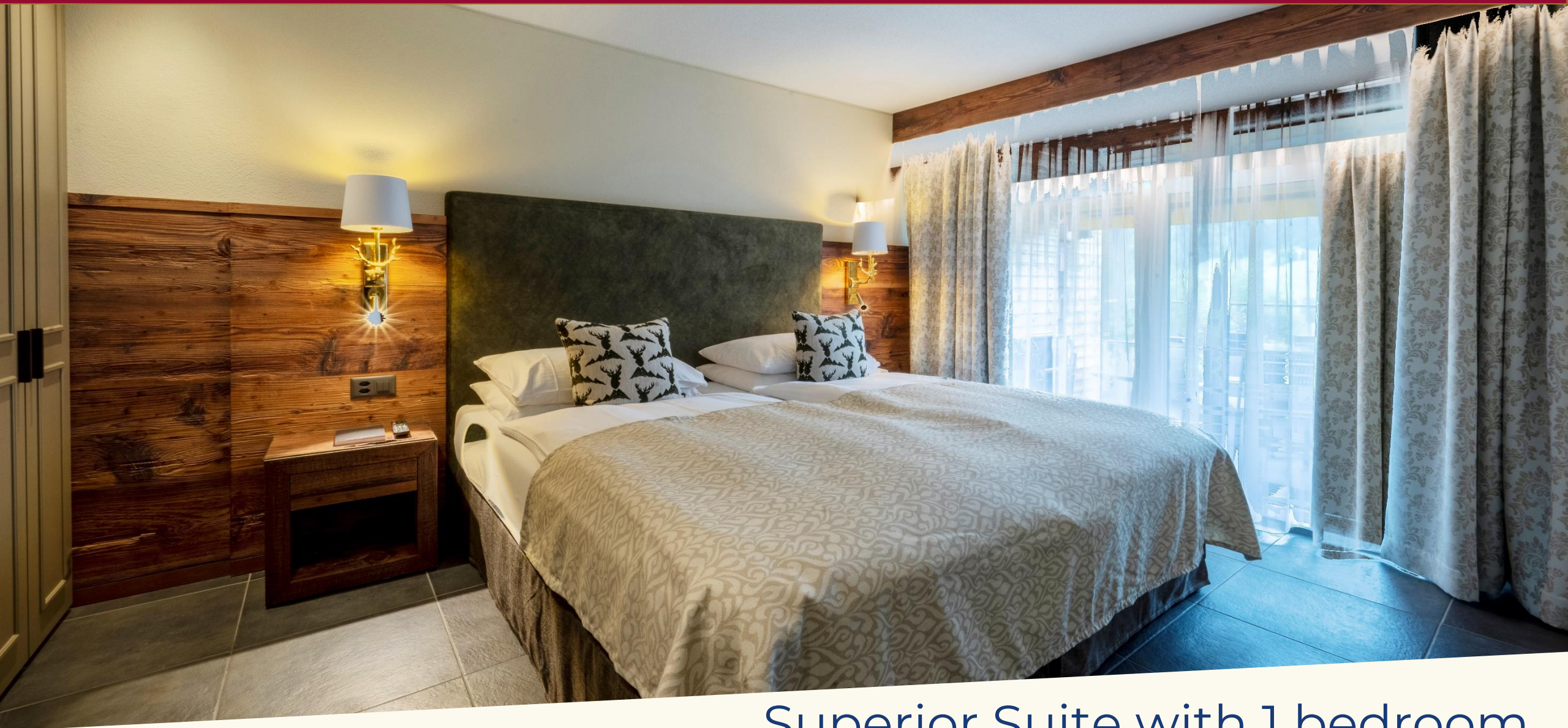
Superior Suites with 1-4 bedrooms
with Eiger view | 100-170 m²



Superior Suites with 1-4 bedrooms
with Eiger view | 100-170 m²



Superior Suite with 1 bedroom
with Eiger view - 100 m²



Superior Suite with 1 bedroom
with Eiger view - 100 m²



Superior Suite with 1 bedroom
with Eiger view - 100 m²



Luxury Chalets in Swiss style



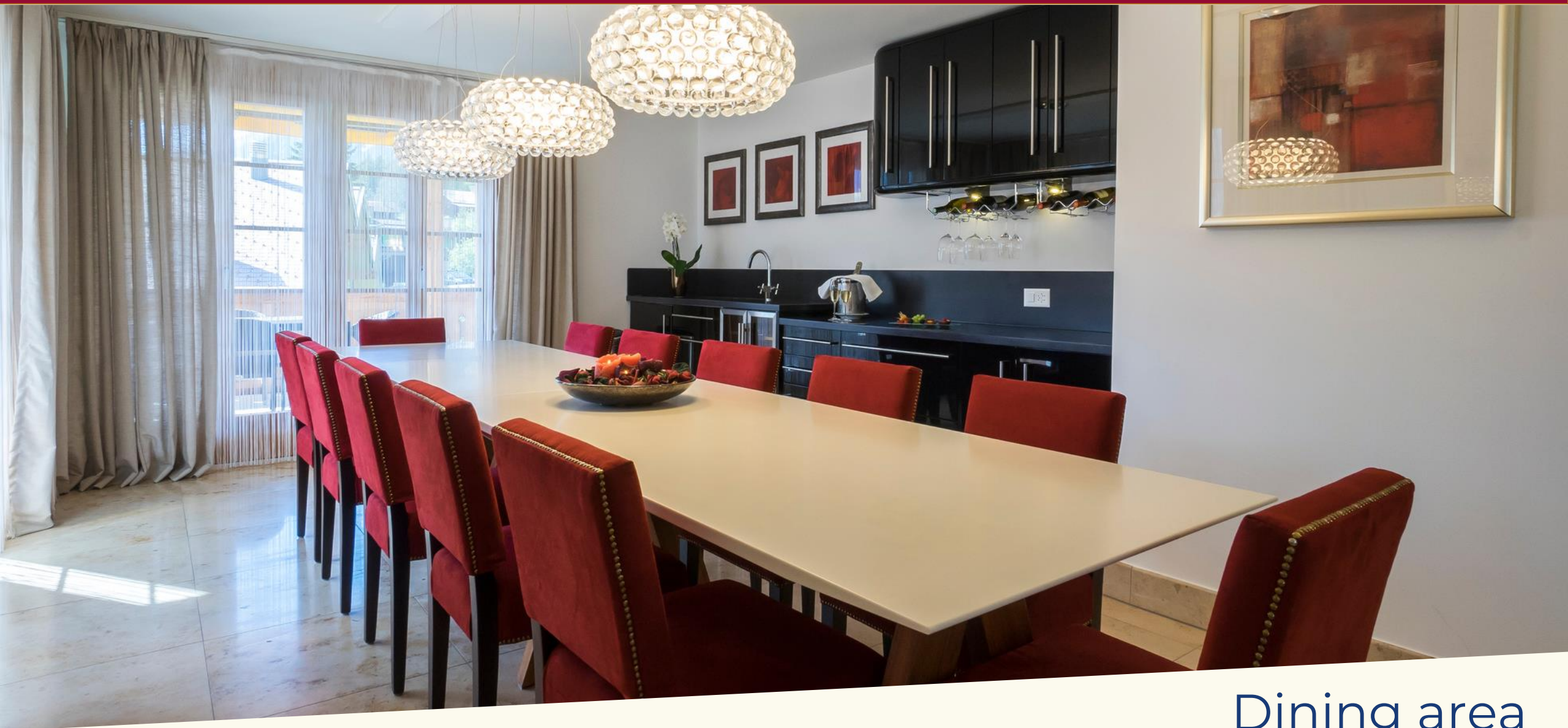
2-21 beds in 4 luxurious suites



With spacious terraces or balconies



One living room per floor



Dining area
for in-room breakfast or dining



Modern design



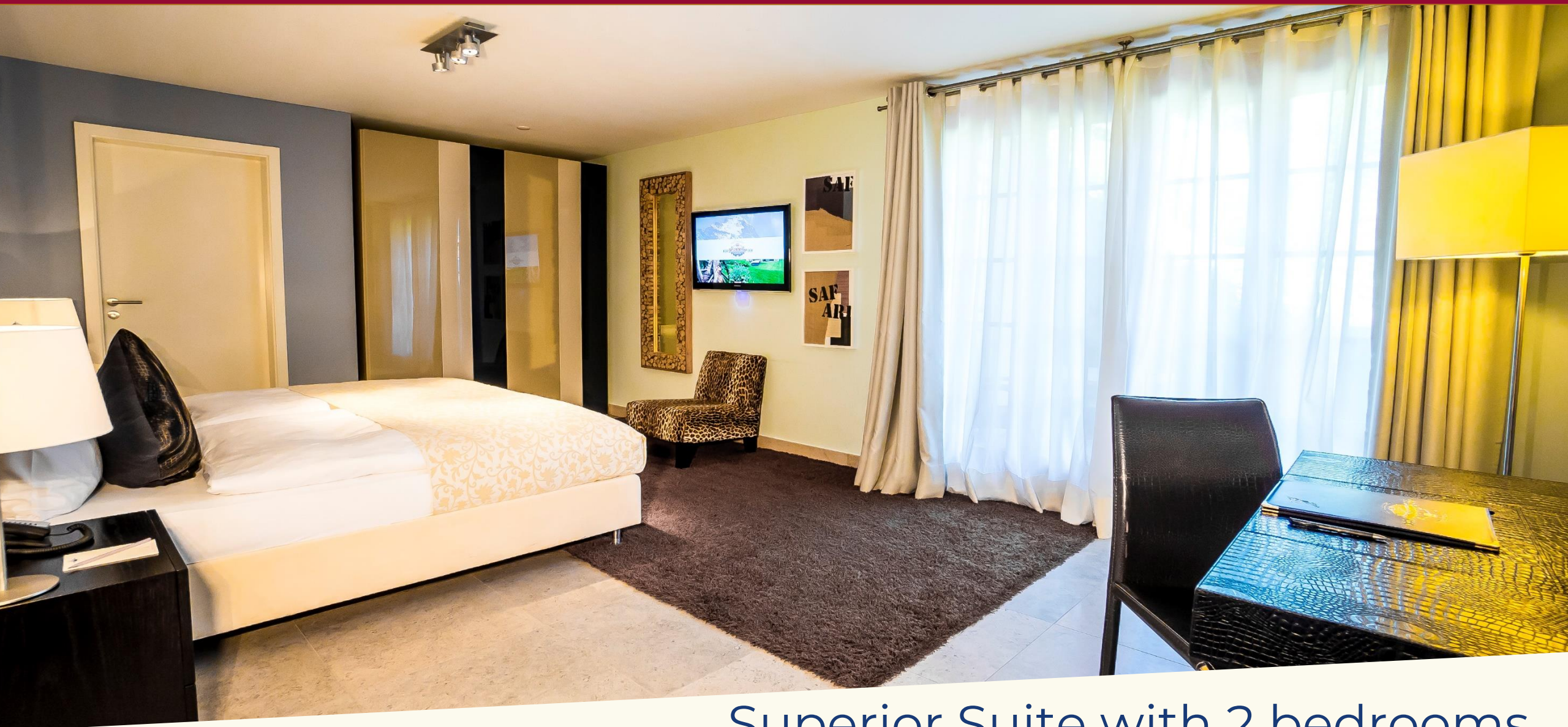
Spacious bathrooms
with bathtub & shower



Superior Suite with 2 bedrooms
with Eiger view



Modern design



Superior Suite with 2 bedrooms
with Eiger view



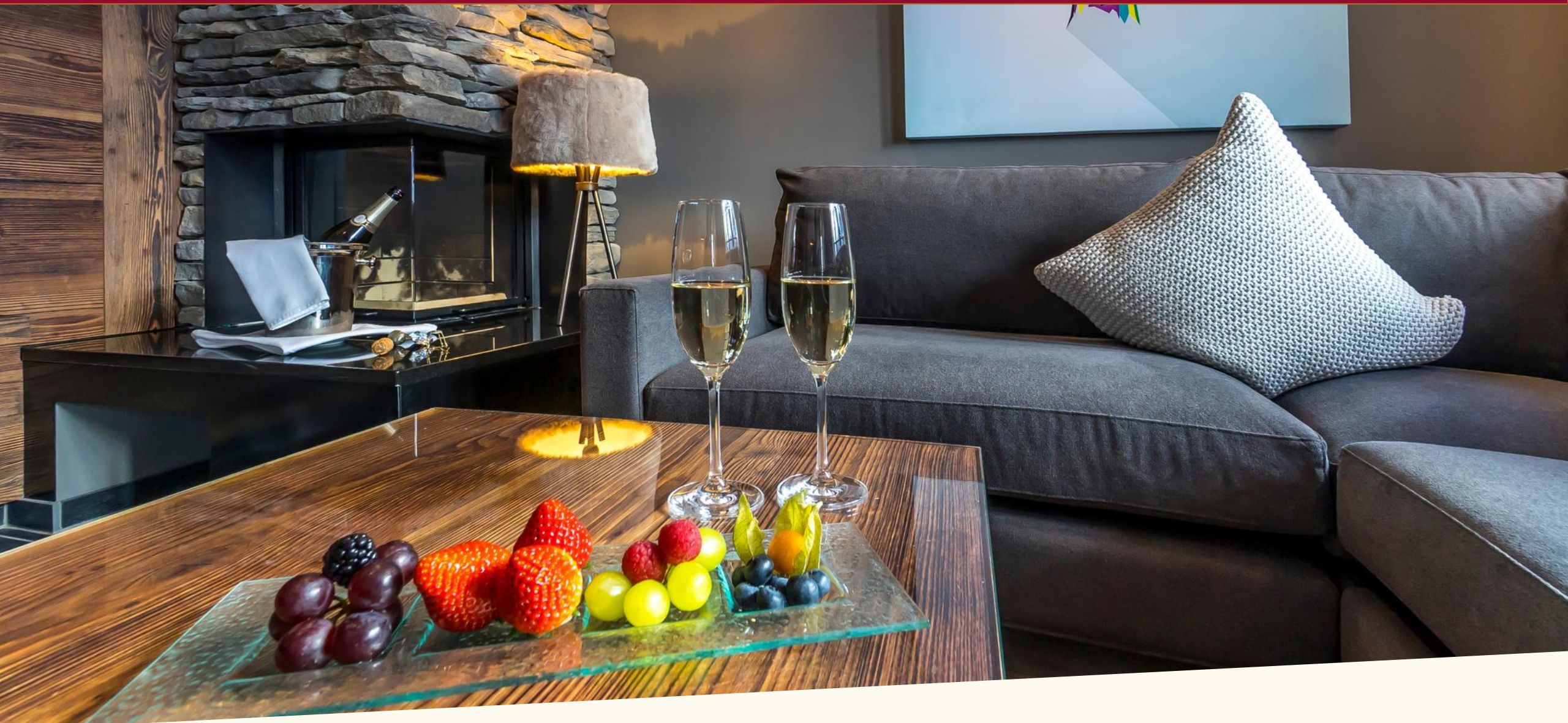
Modern design



Superior Suite with 2 bedrooms
with Eiger view



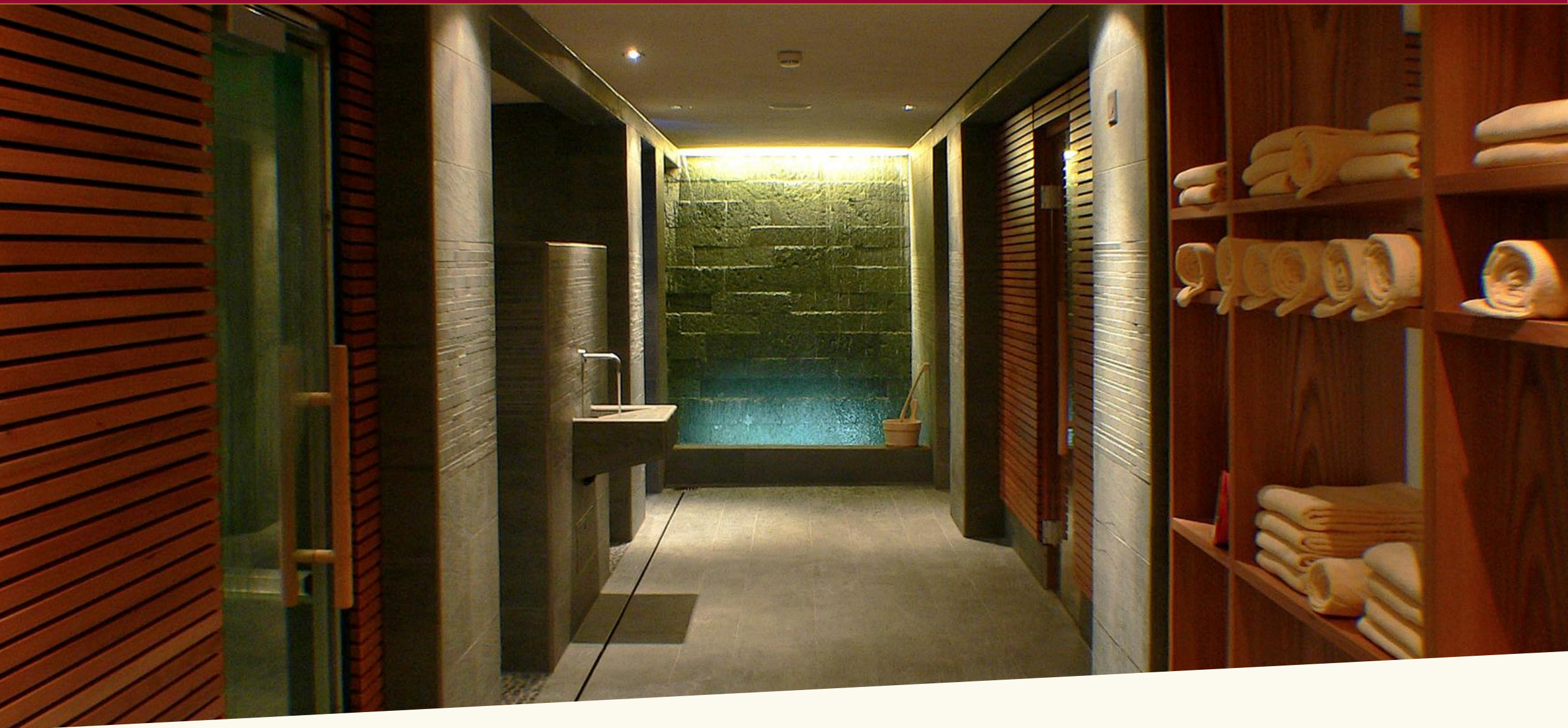
Our services & facilities



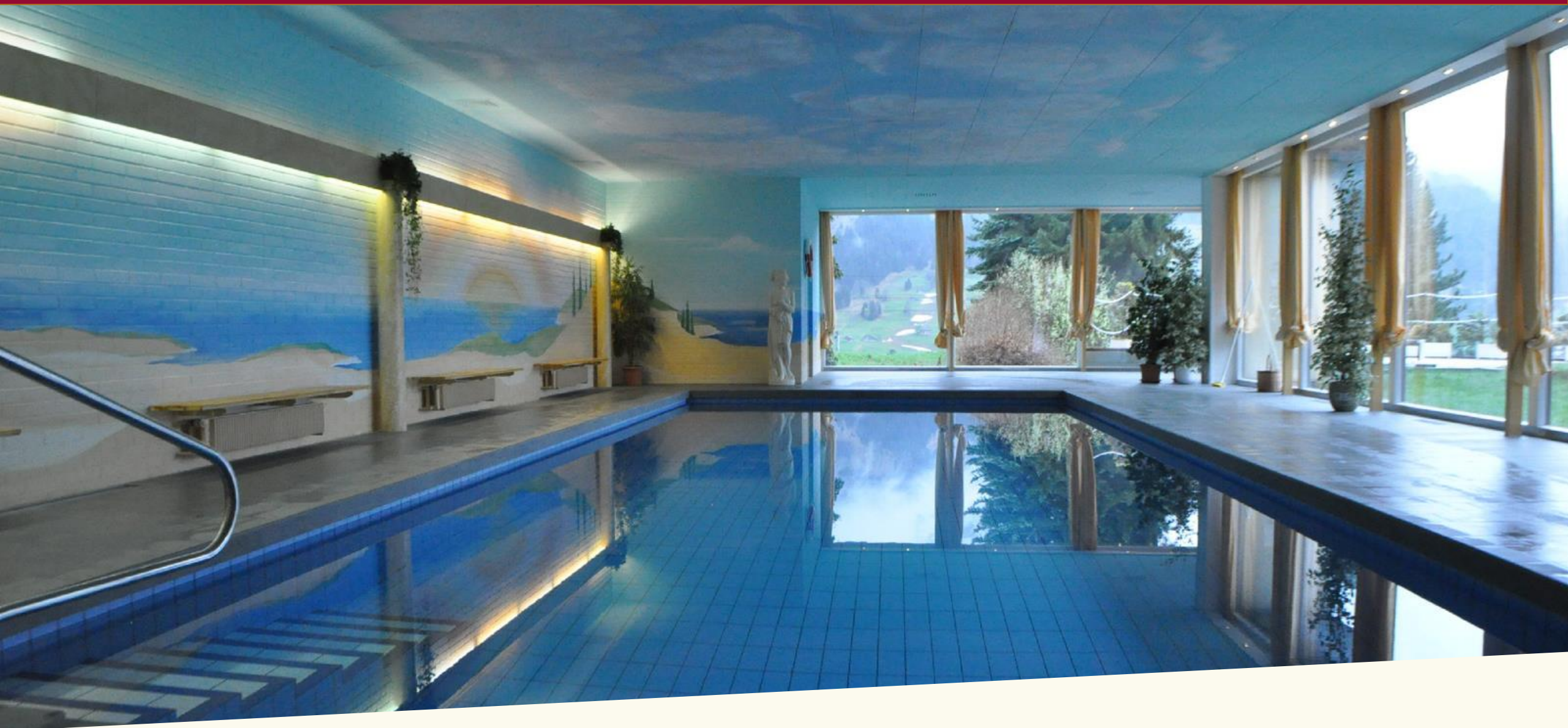
24h room service



Lobby



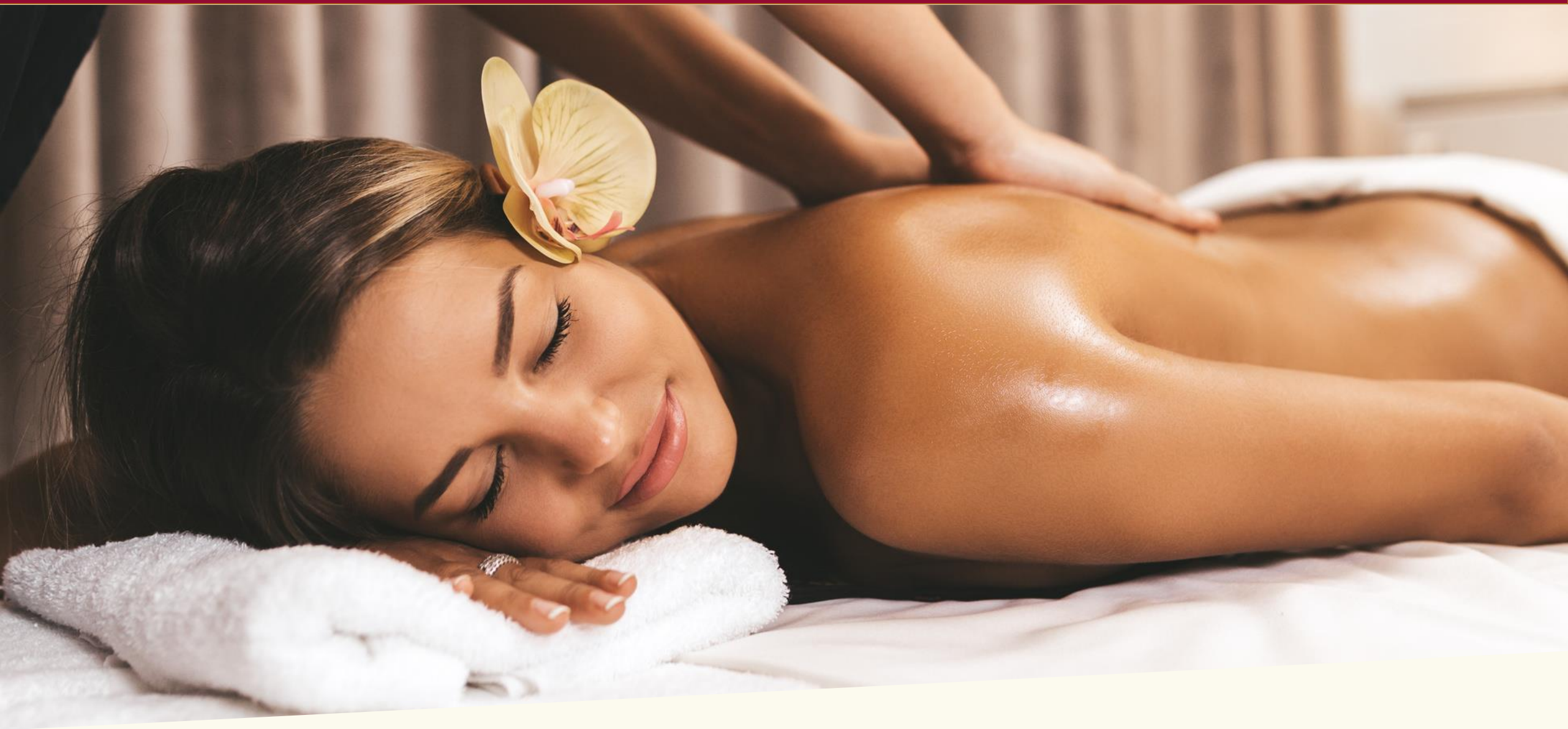
Wellness area



Heated indoor swimming pool



Private SPA



Massages & treatments



Restaurant "Alpterrassen"



Breakfast



Restaurant "Alpterrassen"



Restaurant "Alpterrassen"



Restaurant "Schmitte"
Fine dining à la carte



Restaurant "Schmitte"
Fine dining à la carte



Restaurant "Gaststübli"
Dining à la carte, typical Swiss



Shisha lounge



Interactive restaurant
bowling alley



Interactive restaurant
bowling alley



Interactive restaurant
bowling alley



Wine cellar for cheese &
wine tasting



Meetings | Incentives | Conferences | Events



“Wetterhorn 1 & 2”



“Wetterhorn 3”



“VIP lounge”



“VIP lounge”



Thank you very much for your attention!

Mr. Mario Resch
Director of Sales
marketing@hotel-schweizerhof.com
www.hotel-schweizerhof.com



Contact

Mr. Tino Werner
Sales & Marketing Manager
marketing@hotel-schweizerhof.com
www.hotel-schweizerhof.com



Contact