



# Lindt Home of Chocolate

Stephan Neidhart, Sales Manager

# Lindt Home of Chocolate

Opened 13  
September  
2020



# How to get there?



15min from Zurich city center

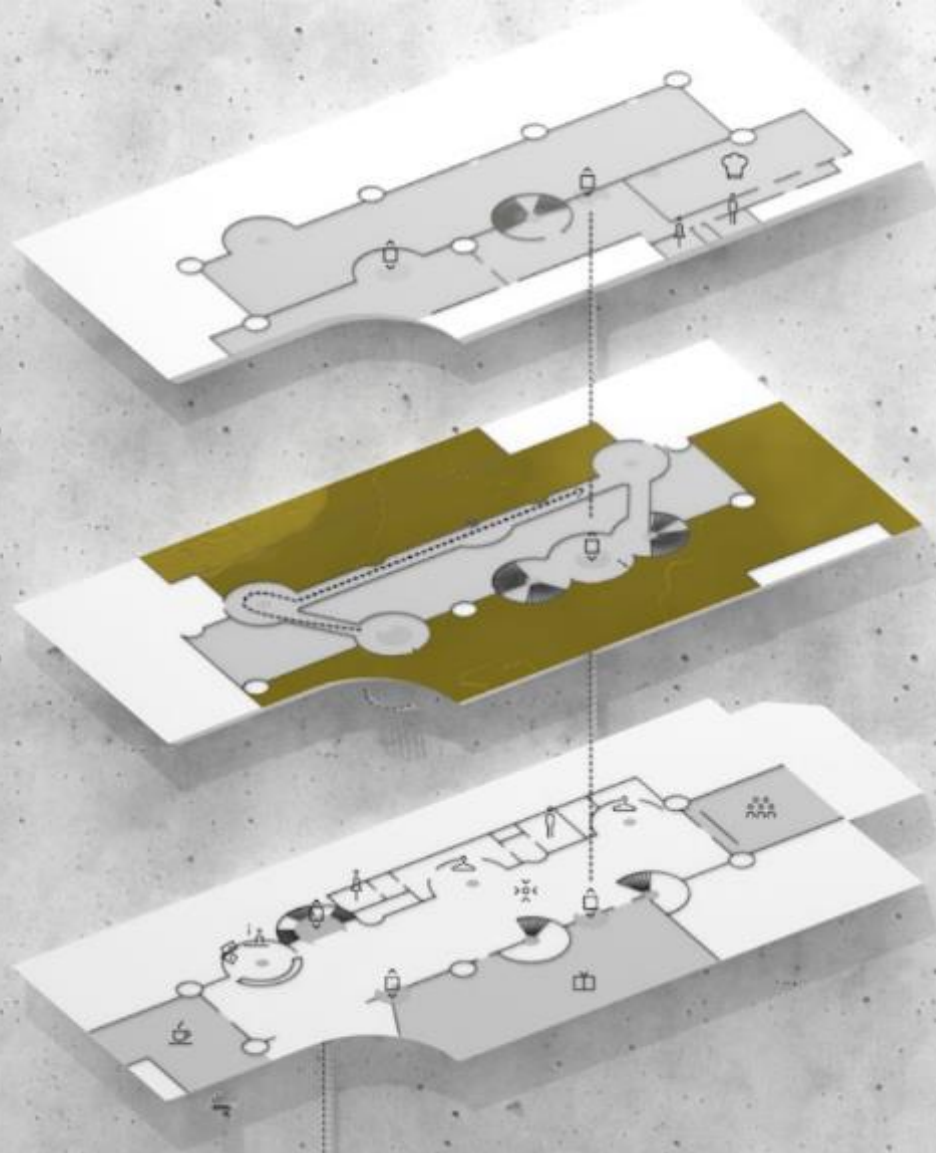
Bus Nr. 165 from Bürkliplatz - 13min  
Boat Cruise from Bürkliplatz - 30min

# Lindt Home of Chocolate

Open 360  
days a year



# Multifunctional Building



2 Chocolateria ☺  
Lounge  
Lobby  
Office  
Toilets 🚻

1 Chocolate World ✓  
Chocolate Innovation  
Product Gallery

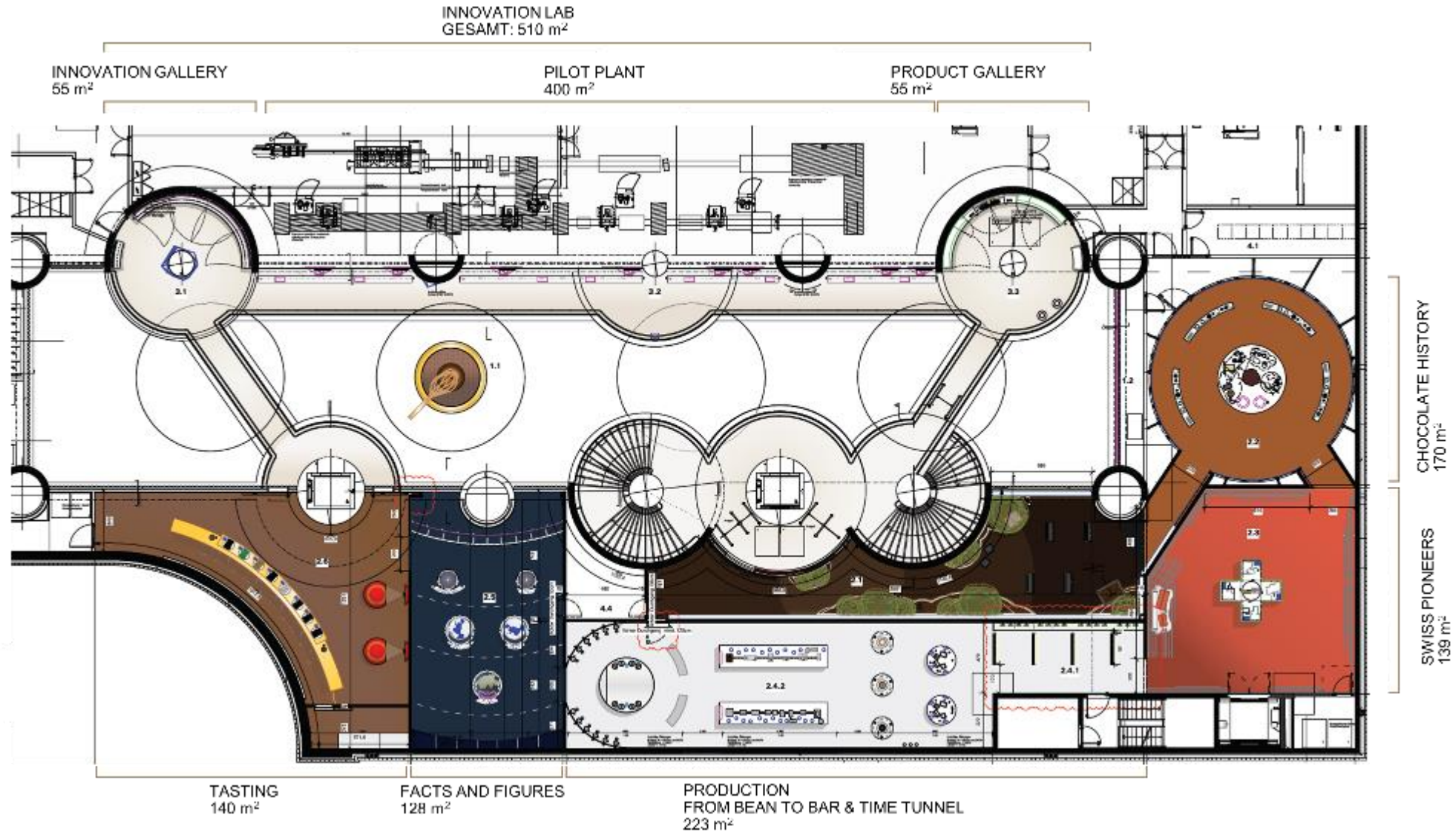
0 Ticket Desk 🧑‍🎫 🗺️  
Chocolate Fountain 🍫  
Café ☕  
Shop 🛒  
Meeting Point Chocolateria  
Lindt Experience 🍫  
Selfie Point 📸

# Foyer with Chocolate Fountain



Over 9m high  
chocolate  
fountain

# Chocolate Tour





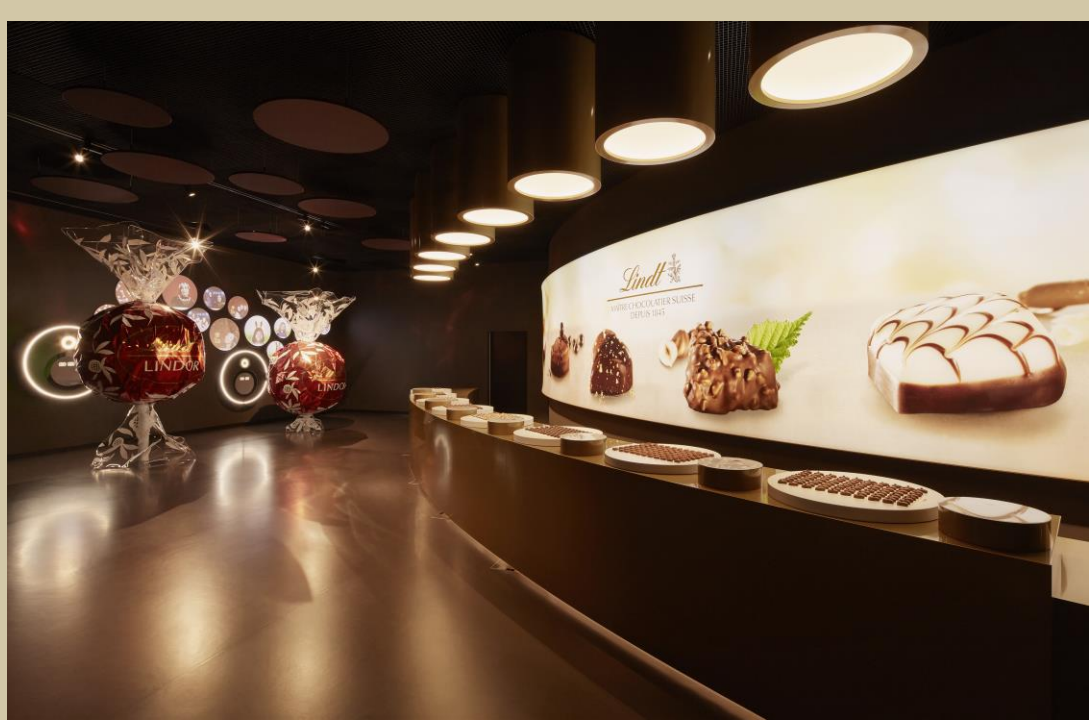
Privat museum rental from 18:00 – 20:00







Unlimited  
Chocolate  
Tasting





Insight of a real  
production



# Audio Guide Tour

## Audio Guide Tour:

Duration of tour approx. 1 hour

Price CHF 15

Unlimited Chocolate Tasting

## Guided Tours:

CHOCO WORLD – 1 hour, CHF 25

CHOCO DELUXE – 1.5 hour, CHF 30

Minimum of 10 people



# Lindt Chocolate Café



# Lindt Chocolate Shop



Biggest Lindt Shop in the world with 500m<sup>2</sup>

# Lindt Chocolateria

Chocolate courses in the Chocolateria for up to 60 people



*Lindt*  
MAÎTRE CHOCOLATIER SUISSE  
DEPUIS 1845

*Lindt*  
MAÎTRE CHOCOLATIER SUISSE  
DEPUIS 1845

# Auditorium



Auditorium  
for up to  
100 pax

# Lounge

Lounge for  
up to 60  
pax





# Prices / Opening hours

Prices (FIT)	CHF
Adults	15.-
Students (>15 years )	13.-
Children (8-15 years)	10.-
Young children (0-7 years)	0.-

Opening hours
Lindt Home of Chocolate: Open 360 days per year Mon – Sun, 10.00 – 18.00 Closed in 2022: Jan 1, Apr 5, Nov 8, Dec 25 & 26

Prices (group rates)	CHF
Group tickets for adults	13.-
Group tickets for children	8.-
Min. of 20 visitors	

Prices guided tours	CHF
CHOCO-WELT	25.-
CHOCO-DELUXE	30.-

Explore the

# Lindt Home of Chocolate

- Interactive Chocolate Discovery Tour
- 9 Meters Chocolate Fountain
- Largest Lindt Chocolate Shop in the World
- Pilot Plant Production
- Chocolate Café
- Maître Chocolatier Workshops
- Only 15 Minutes from Zurich
- Parking Garage
- Bus drop-off



---

CHOCOLATE COMPETENCE  
FOUNDATION

# Stephan Neidhart

## Sales Manager



**Stephan Neidhart**

Sales Manager bei Lindt Home of Chocolate



CHOCOLATE COMPETENCE  
FOUNDATION