

DISCOVER THE MAGICAL LINDT HOME OF CHOCOLATE

OPENING
IN FALL



**IN SUMMER 2020
THE WORLD IS SET
TO GAIN A NEW
ATTRACTION.**

The modern, light-flooded museum building, designed by star architects Christ & Gantenbein, offers 20 000 m² of chocolate fascination with a chocolate fountain, multimedia exhibition,

café, workshops and the largest Lindt Chocolate Shop.

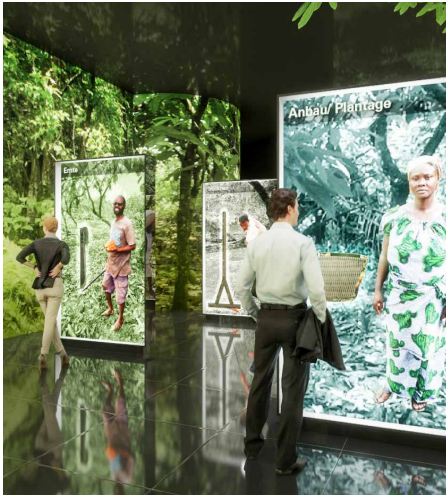
A perfect destination for all chocolate lovers from home and abroad.

Lindt 

HOME OF CHOCOLATE

www.lindt-home-of-chocolate.ch | Schokoladenplatz 1 | Kilchberg | Switzerland

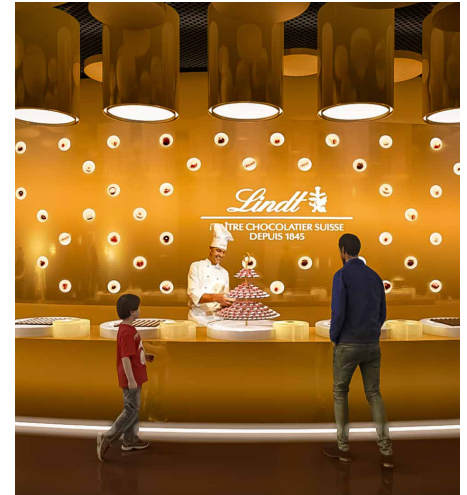
EXPLORE AND EXPERIENCE



MUSEUM: INTERACTIVE CHOCOLATE DISCOVERY TOUR WITH SHOW PRODUCTION FACILITY



Immerse yourself in this unique world devoted to all things chocolate. The interactive multimedia exhibition with an audio guide lets you explore the seven worlds of chocolate with all your senses: from its origins

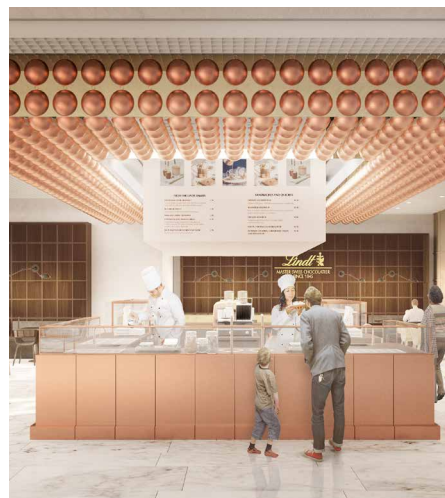


to its history, including chocolate tasting to your heart's content. The show production facility demonstrates the very latest manufacturing and automation technologies.



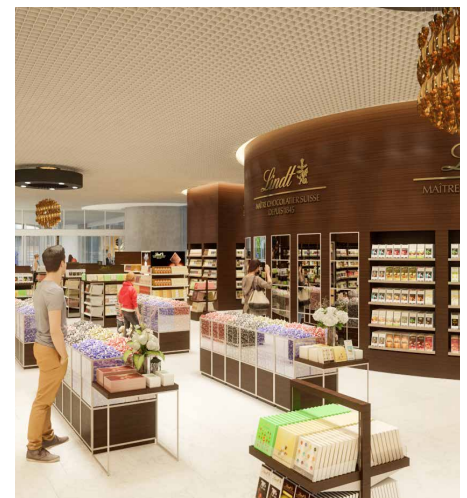
Lindt Chocolateria Courses

Create your very own masterpieces in the Lindt Chocolateria under the expert guidance of the Lindt Maîtres Chocolatiers. Choose from the current range of courses or book an exclusive group event for up to 60 people.



Lindt Chocolate Café

Indulge yourself in the Lindt Café and sample the Lindt drinking chocolate in various flavours, or enjoy one of the many other delicacies as you look out over the striking chocolate fountain that works seemingly by magic.



Lindt Chocolate Shop

The world's largest Lindt Chocolate Shop presents 500 m² of the finest chocolate craftsmanship. Watch live as the Lindt Maître Chocolatier carefully puts the finishing touches to the freshly produced pralines, bars and other sweet delicacies.



HOME OF CHOCOLATE

www.lindt-home-of-chocolate.ch | Schokoladenplatz 1 | Kilchberg | Switzerland

EVENT AND LOCATION

THE LINDT CHOCOLATERIA, THE LOUNGE AND AUDITORIUM IN THE ENTRANCE AREA ARE AVAILABLE VENUES FOR YOUR IMPRESSIVE EVENTS.



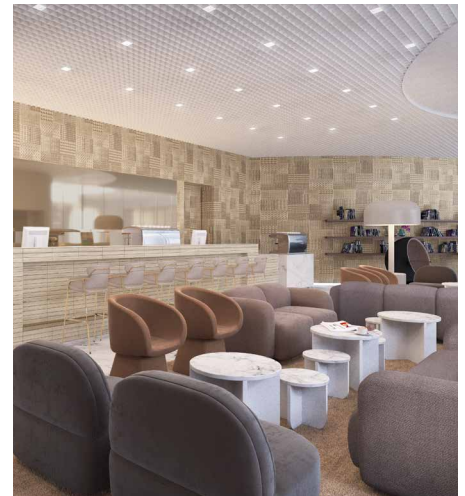
Chocateria (200 m²)

For unique events on the Second Floor for up to 60 people.



Auditorium (150 m²)

For company and product presentations on the Ground Floor for up to 100 people.



Lounge (220 m²)

For exclusive occasions before or after visits to the Museum or the Chocateria for up to 60 people.

Lindt 

HOME OF CHOCOLATE

www.lindt-home-of-chocolate.ch | Schokoladenplatz 1 | Kilchberg | Switzerland

VISIT AND ENJOY



**CENTRAL LOCATION
WITH GOOD PUBLIC
TRANSPORT CONNEC-
TIONS.**

Location

Lindt Home of Chocolate
Schokoladenplatz 1 | Seestrasse 204
CH-8802 Kilchberg

Getting there

From Zurich to Lindt Home of Chocolate, Kilchberg in 20 minutes
– Bus from Bürkliplatz
– Ship from Bürkliplatz
– Train and 10 minutes' walk
– 10 minutes by car from motorway exit Thalwil-Rüschlikon

Contact

Stephan Neidhart
Sales Manager
Lindt Home of Chocolate
+41 44 716 20 04
sneidhart@lindt-home-of-chocolate.ch

Opening hours

– Mon – Sun 10.00 am – 6.00 pm
– Lindt-Shop, Mon – Fri 10.00 am – 7.00 pm, Sat – Sun 10.00 am – 6.00 pm
The exhibition (Chocolate Tour) will be closed on the following days:
01st January, 25th /26th December
Last Tuesday in April / Last Tuesday in October

Admission Museum

– Adults	CHF 15
– AHV, IV, Student (>16 yrs)	CHF 13
– Child (7–15)	CHF 10
– Infant (0–6)	free
– Group tickets	
Adults (30+ persons)	CHF 13
Children (30+ persons)	CHF 8

HOME OF CHOCOLATE

www.lindt-home-of-chocolate.ch | Schokoladenplatz 1 | Kilchberg | Switzerland