

Spring/Summer Highlights of 2024

The Canton of Bern is a wonderful holiday destination, offering many diverse activities all year round. The upcoming spring and summer season will provide much to see, to experience, and to enjoy – with plenty of opportunity for outdoor activities. Below is a list of offerings that are particularly exciting, adventurous in the upcoming months.

New experiences

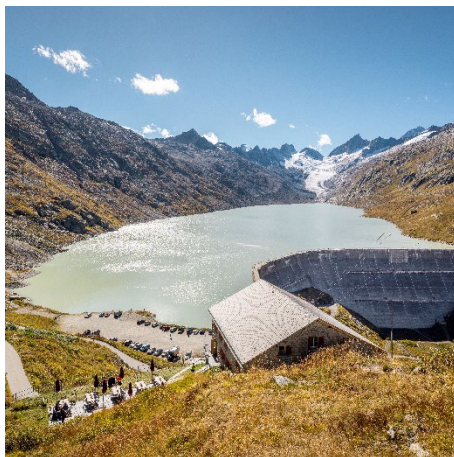
Renewal of the Gurten funicular and 125th Anniversary



Up, up, and away with the new Gurten funicular: Spacious new wheelchair accessible cabins await to bring you up to Bern's local mountain, the Gurten. It can be reached via a pleasant and short ride to the top. Construction of the new funicular is scheduled for the first half of 2024. Although the funicular will not be operating during this period, visits to the "park surrounded by green" will still be possible: guests can hop on comfortable buses to visit the mountain with its meadows, restaurant and playgrounds. The renovated Gurten funicular will resume operations in May 2024 – just in time for its 125th anniversary.

More information: gurtenpark.ch/en/gurten-funicular/renewal-funiculare/

Fascinating Grimselwelt



Discover the Bernese Oberland's fascinating Grimselwelt – including the nostalgic [Reichenbach Falls railway](#), which has been ascending to the 110-meter-high Reichenbach Falls since 1899. Upon arrival, just a short distance from the mountain station, three viewing terraces offer breathtaking views of the roaring water and the Haslital valley below. Fans of Sherlock Holmes can follow the final footsteps of the detective and relive the famous showdown between Holmes and his adversary, Professor Moriarty at the Reichenbach Falls. Equally spectacular is the tour of the [Spitallamm](#) construction site. Between 8 June and 20 October, visitors can get a behind-the-scenes look at the Grimsel project of the century, the construction of the Spitallamm replacement dam. You will be amazed by the source of the Aare river, which originates here in the Grimselwelt from the Oberaar and Unteraar glaciers. You can trace the route on a [multi-day hike](#) starting in the town of Meiringen.

More information: madeinbern.com/en/stories/where-nature-works-with-all-its-power

The Albert Anker Centre



The Albert Anker Centre will open in the town of Ins in early June 2024 – creating a unique place housing experience and knowledge with regional roots and national significance. During the construction phase, the studio and residence will be restored into a historical place of interest for visitors. A newly built art pavilion will also serve as a secure place to store and exhibit art and other cultural objects.

Albert Samuel Anker (1831–1910) was a Swiss painter and graphic artist from Ins. He created some of the most enchanting children’s portraits, and his realism paintings and drawings are well-known and appreciated throughout Europe. His works radiate a deep humanity and remain inspiring to this day.

More information: j3l.ch/en/P127171/things-to-do/culture-museums/museums/centre-albert-anker

Exploring Saint-Imier

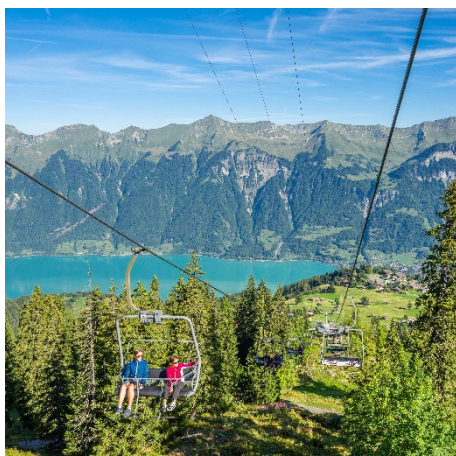


The “Circuit Secret” offers a behind the scenes glimpse of the town of Saint-Imier. Equipped with a digital key and brochure, visitors of all ages gain access to four secret locations, many of which are even unknown to the residents of Saint-Imier. All rooms show different facets of industrialization and its impact on society. Visitors, for example, can learn about the inner workings of an old water pump and will be amazed by the visual and acoustic animations that have been installed in all rooms by local artist Swann Thommen.

Swann Thommen was born in 1979 in Saint-Imier and studied at the Ecole Supérieure des Beaux-Arts in Geneva. The versatile artist lives and works in Geneva and Saint-Imier. His multifaceted artwork encompasses sound and video, as well as the production of electronic music.

More information: j3l.ch/en/P127161/things-to-do/culture-museums/cultural-heritage/circuit-secret-st-imier

Summer on the Axalp



For the first time in the history of the Axalp Windegg AG sports lifts, the chairlift will also operate in summer (daily, in good weather from 29 June – 13 October). The Axalp offers an unforgettable view of turquoise Lake Brienz and the surrounding mountains. In summer, beautiful hiking trails guarantee both adventure and relaxation. Choose from a family hike along the Schnitzlerweg to the Hinter-Burgseeli, a guided hike complete with an alpine lunch on Tschingelfeld Alp, or the challenging tour to the top of Mount Tschingel – there’s something here for every hiking enthusiast.

More information: axalp.ch

Enjoy spring & summer to the fullest

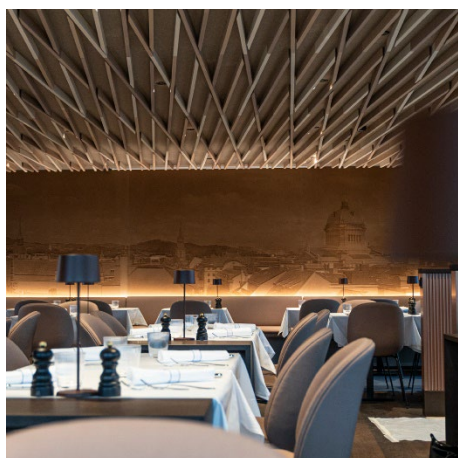
A cheesy expansion in Fondueland Gstaad



Gstaad is already famous for the oversized wooden caquelons which invite visitors to bring and heat up their fondue amid beautiful slopes and trails. New this year, however, is the Rinderberg Caquelon which has been placed directly on a hiking trail. It's a first of its kind! This culinary highlight offers guests a unique outdoor dining experience, and the fully equipped fondue backpack can now also be ordered with raclette cheese. In addition to the XXL caquelons, a new "Herrenschwändli" barbecue area in Abländschen has been added, and the "Sodersegg" recreation area between Wispile and Lauenensee have been expanded.

More information: gstaad.ch/en/gstaad/enjoyable-outdoor-experience/fondueland-gstaad/

Culinary nest above the roofs of Bern



"Nido", the new star on the Bernese gastronomy scene, was officially launched on 24 November 2023. This rooftop restaurant near the main station above the LOEB department store offers a gorgeous panoramic view over the rooftops of the old town, and the Bernese Alps in the distance. Seating 70 indoors and 70 outdoors on three spacious terraces, "Nido" guarantees incredible experiences all year round. Sardinian Chef Carlo Piras and his team surprise guests with Italian classics and reinterpretations, from "Polpo arrosto con funghi porcini" to "Filetto di manzo Rossini", as well as delicious pizzas fresh from the oven.

More information: <https://loeb.ch/ristorante-nido>

Delightful culinary treat in the Bernese Oberland



The Bernese Oberland resort of Grindelwald aims to establish itself among Switzerland's "culinary highlight locations". To strengthen its reputation, the "Top Taste of Grindelwald Alpine Excellence Food Festival" association was founded on 4 December 2023. Their first event is an "Alpine Excellence Food Festival", which will premiere from 10 – 12 May 2024 and be held annually thereafter.

For three days, Grindelwald will focus on local culinary delights and excellent chefs. Various live demonstrations will be showcased throughout the village on the opening evening, and visitors can expect show cooking by top chefs from the five local GaultMillau establishments, as well as a wide selection of food stands. On the second day of the festival, an exclusive tasting of various premium products on the Jungfrauoch is on the agenda. In the evening, a "Top Taste"

gourmet dinner will be held at one of the participating partner hotels, and a chic finale awaits you with the “Top Taste” jazz brunch accompanied by live music in the Bergwelt Grindelwald restaurant.

More information: grindelwald.swiss/en/discover/events/detail/alpine-excellence-food-festival-2.html

Enjoy Biel



Choose from numerous delightful excursions in the Biel-Seeland and Grand Chasseral regions. The evening [Gourmet Tour](#) offers a glimpse behind the scenes of local gastronomy, and includes tastings in three of Biel’s gastronomic establishments: an aperitif at the Sauvage Bar, appetizers and main course at the Ecluse Restaurant, and a sweet dessert at the Lokal Restaurant. Alternatively, sweet tooths can embark on the [Nourritour](#), a unique culinary walk with seven stops in the old town of Biel. Wine connoisseurs will also love the [Vinitour](#) wine walk and tasting: the 3 km hike leads through the Biel vineyards, stops at three different wineries, and offers 13 delicious wines for tasting.

More information: [Culinary experiences in the Biel Seeland region](#)

The newest hotel gems in the Bern region

Two new unique and luxurious additions

Gstaad's hospitality sector is enticing guests with two new luxury accommodations to choose from. The [Mansard Lifestyle Hotel](#) – opening in May 2024 – is true to the motto “less is more”, boasting 29 rooms (including one suite and two family rooms), all complete with high-quality furnishings. The hotel's Vane rooftop bar offers a “uniquely Gstaad experience” thanks to its gabled roof and 360° terrace hidden from street view. An open staircase at the centre of the hotel allows natural light to illuminate the heart of the building. A second new highlight, the [Ultima Residences](#), will open its doors for the summer season of 2024. This exclusive chalet with eight bedrooms features its own discotheque and cinema, a private spa, and exclusive dining and living rooms. A luxurious getaway in Gstaad awaits you.

Five stars for Wengen



A new 5-star hotel is opening in the town of Wengen in the Bernese Oberland. The French hotel group Beaumier will manage the “Belvédère” with its 90 rooms and suites overlooking the Lauterbrunnen valley starting this summer. The hotel features a classic Alpine style, two restaurants, as well as a spa area with infinity pool.

More information: beaumier.com/en/

Interlaken welcomes a new hotel



Located near the Interlaken West railway station and the congress centre, the new Essential by Dorint Hotel opens in April 2024. Combining aesthetics with functionality, and design with coziness, its 82 double rooms and generous suites leave nothing to be desired. In addition to a spacious lobby, guests can relax in the cozy lounge bar with a special F&B offer and enjoy the generous breakfast.

More information: essential-hotel-interlaken.dorint.com/en/

Stay active throughout the summer

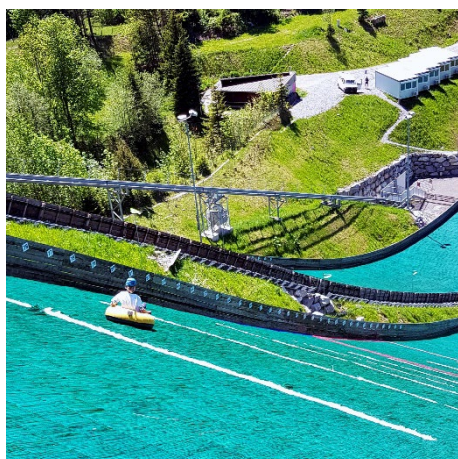
Trail running in the Bern region



Along a ridge path? From mountain lake to mountain lake? Beside a glacier? No matter, when it comes to trail running, the main thing is to traverse rocks and stones at advanced speeds. Both beginners and experienced runners will find plenty of trails to explore in the diverse Bern region. The holiday region of Adelboden-Lenk-Kandersteg, in particular, has become a veritable trail runner's paradise. Check out the [Laeli Fortuna Trail](#) which leads into the heart of Adelboden's wild and romantic landscape and features one of Switzerland's highest waterfalls, the Engstligen Falls. Meanwhile, the [Gurnigel Fortuna Trail](#) winding through the Gasterntal valley up to Arvensee lake offers something new at every turn. The [Sunrise Trailtour](#) is especially worthwhile for early risers: on selected weekends you can head up to the Tschentenalp accompanied by local mountain running professional Jonathan Schmid and running instructor Silvia Nüesch. With the first warm rays of sunshine at your back, the 700 meters of altitude are quickly overcome, and the [Engstligenalp](#) high plateau also offers top-class trails. Peaceful routes over alpine meadows, leisurely tours over moderate paths, or challenging tracks with many meters of altitude: trail runners can immerse themselves in a unique mountain world and discover new favourite routes at 2,000 meters above sea level.

More information: madeinbern.com/en/experiences/trail-running

Thrilling summer downhill tubing



Vogellisi Land attracts adventurous visitors with summer mountain tubing in the Kandersteg Swisscom Nordic Arena. The activity is open from June to the end of September. With speeds of up to 90 km/h, only the daring rush down the ski jump slopes. A unique experience against an even more unique backdrop – pure adrenalin is guaranteed.

More information: nordicarena.ch/en/activities/mountain-tubing

E-bike tours



Bikers will love the ten specially designed “highlight routes” around the UNESCO world heritage site of Bern. Choose from lake Wohlen, Gantrisch nature park, the town of Laupen, the high Frienisberg plateau, or the rolling hills of the “Hügu Himu” Emmental. Each circular route promises a memorable e-bike experience. Unique Bernese culinary delights, cultural experiences, and natural spectacles await. All ten highlight routes are integrated in the SchweizMobil network, are perfectly signposted, and mostly avoid main roads. All are also suitable for gravel bikes.

More information: bern.com/en/bicycletrekking

Fascinating Eiger north face

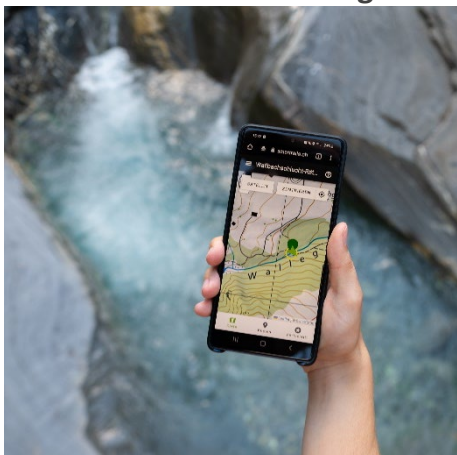


At over 1,800 meters high, and infamous for sudden weather changes, avalanches, and rockfalls – the north face of the Eiger is a worldwide symbol of the highest achievements in mountain climbing. Less demanding but equally spectacular is the “Eiger Walk of Fame” which will be accessible from summer 2024. The approximately two-and-a-half-hour circular hike starts above the Eigergletscher station and offers an incomparable view of the nearby Eiger north face, as well as the rock and ice masses of the “Dreigestirn”: the Eiger, Mönch & Jungfrau mountains. Along the way, a total of eight plaques provide insights into mountaineering on the north face, including facts, years, and famous routes. Arriving at Fallboden, hikers can choose from the circular route back to Eigergletscher or walk down to the Kleine Scheidegg.

More information: jungfrau.ch/en-gb/kleine-scheidegg/eiger-walk-of-fame/

Family time

SmarTrails in the Bern region



Puzzles, experiments, experiences – the Bern region entices visitors with a diverse range of mystery and adventure trails for young and old. Destinations such as Adelboden-Lenk-Kandersteg are increasingly introducing smarTrails: participants are guided to virtual checkpoints via smartphone and fun multimedia content appears automatically when the right location is reached. The 2½-hour [Wallbachschlucht riddle trail](#) entertains visitors with playful tasks to help you enjoy nature while you wonder at the Wallbach river and the metre-deep holes carved into the limestone over centuries. The newly launched 1½ hour [Erlenbacher theme trail](#) leads you to 14 selected stations in the village of Erlenbach.

More information: madeinbern.com/en/experiences/summer/hiking/mystery-adventure-trails

More fun in Saaniland



The new exciting Saaniland playground, located directly in the heart of the Gstaad (Litzi) chalet village will feature a 7-meter-high observation tower high above the roofs, with a direct view of the legendary Gstaad Palace. The “[Saanis Kletterplatz](#)” playground was also built directly on the Saanis Bergerlebnis themed trail in Schönried in 2023. The [Alpenruhe Experience World](#) with its bouncy castle, pirate ship, petting zoo, and train has been attracting families to the holiday region since 2022. Saaniland also attracts hiking enthusiasts and, from July 2024, will present something new: a novelty theme trail to enrich the popular easy high-mountain [hike from Rinderberg to Horneggli](#). The trail describes alpine farming in an entertaining and informative way using fun characters from Saaniland.

More information: gstaad.ch/en/summer/saaniland.html

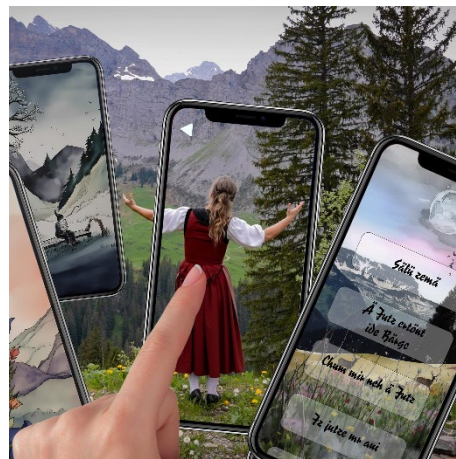
Children stay for free



Children up to 16 years stay free of charge in selected partner hotels in the Destination Bern. Enter the promo code “Familiezyt” (family time) when booking to benefit from this great offer. Choose from cozy rooms in the lovingly restored Landgasthof Kemmeriboden-Bad, glamorous suites at Schloss Hünigen, or the base of the “BäreTower” the tallest residential building in the Canton of Bern – there’s something for everyone!

More information: bern.com/de/familiezyt

GrimmiJutz yodeling experience in Diemtigtal nature park



The themed trail GrimmiJutz opened in spring 2024 is part of a new Grimmimutz adventure. The evil Pepper Witch casts a curse and transforms the Grimmialp into a dark place. Thankfully, the Grimmimutz character receives a special gift from an elf: the ability to yodel. Grimmimutz climbs the alp every day to sing – his voice drives away negative energy, makes the birds chirp happily, and encourages more and more people to join in the yodeling. Everyone is invited to learn the “GrimmiJutz” song and help bring colour back to the valley. Nine stations along the 6 km mountain trail teach young and old how to yodel the song written by well-known Diemtigtal resident Miss Helvetia. At the end of the trail, visitors can record and upload their own yodel in the GrimmiJutz Stübli. Great prizes await the most original yodelers.

More information: diemtigtal.ch/grimmijutz

Top events

- 27 March – 14 April 2024: [Interlaken Classics](#)
- 13 April 2024: [Swatch Nine](#)
- 13 – 15 June 2024: [Greenfield Festival](#)
- 21 – 22 June 2024: [LA REINE – the “women-only” road bike festival](#)
- 22 June – 7 September 2024: [Wilhelm Tell Open Air Theatre, Interlaken](#)
- 28 – 30 June 2024: [International Trucker & Country Festival, Interlaken](#)
- 3 – 7 July 2024: [Swatch Beach Pro Volleyball, Gstaad](#)
- 7 July 2024: [Ironman Switzerland, Thun](#)
- 10 July – 24 August 2024: [Open Air Lakeside Theatre, Thun](#)
- 13 – 21 July 2024: [EFG Swiss Tennis Open, Gstaad](#)
- 16 – 21 July 2024: [FEI Vaulting Championships, Bern](#)
- 17 – 21 July 2024: [Eiger Ultra Trail by UTMB, Grindelwald](#)
- 31 July – 10 August 2024: [Lakelive, Biel](#)
- 12 – 31 August 2024: [Gstaad Menuhin Festival & Academy, Gstaad](#)
- 16 – 17 August 2024: [Inferno Triathlon, Berner Oberland](#)
- 6 – 7 September 2024: [International Jungfrau Marathon](#)
- 12 – 15 September 2024: [Wildstrubel race by UTMB](#)
- 13 – 22 September 2024: [Swiss Chamber Music Festival](#)
- 20 September 2024: [“Chästeilet” Alpine Cheese Festival, Justistal](#)
- [Alpine cattle processions](#)

Images incl. copyrights can be downloaded [here](#).

For further information and visual material:

Made in Bern AG, Thunstrasse 8, CH-3005 Bern

Cristina Schelbert, Head of Markets and MICE

Phone: +41 31 300 33 00; E-Mail: schelbert@madeinbern.com

www.madeinbern.com

Medienmitteilung, 18. April 2024

Auszeit in voller Alpenblüte

Neue Locations, versteckte Juwelen und jede Menge Bergnatur – diesen Sommer zeigt die Destination Adelboden-Lenk-Kandersteg, was den Reiz der Schweizer Alpen ausmacht.

Über 3000 Meter hohe Gipfel, tosende Wasserfälle und grasende Kühe in den blühenden Weiden: Adelboden-Lenk-Kandersteg im Herzen des Berner Oberlands ist sowieso eine Top-Adresse für Urlaub in den Bergen. Doch ab diesem Sommer machen neue Unterkünfte den Besuch noch attraktiver. Dazu gehört etwa das Hotel The Brecon im Zentrum des Chalet-Dorfs Adelboden. Der 4-Sterne-Betrieb mit seinen 22 Zimmern und 4 Suiten punktet unter anderem mit der Kombination von Komfort mit Stil und hoher Qualität beim Service. Egal ob in der Lobby mit viel Holz, im Outdoor-Pool mit Bergsicht oder im Spa mit seinen wohltuenden Behandlungen – «The Brecon» sorgt in allen Bereichen für erholsame Momente.

Vier Wände für eine Hochebene

Ebenfalls neu sind die Unterkünfte in der Sennhütte auf der Engstligenalp. Der Betrieb liegt auf einer gewaltigen Hochebene auf knapp 2000 m ü. M. und ist per Seilbahn bequem zu erreichen. Sieben neue, top-moderne Zimmer im Alpenchic-Stil stehen dort hoch über Adelboden für BesucherInnen bereit – drei davon eignen sich besonders für Familien. Und weil die Bergluft hungrig macht: In der nahen und ebenfalls neuen Raclettehütte lässt sich mit dem geschmolzenen, würzigen Käse der Region ausserdem eine der leckersten Spezialitäten der Schweizer Alpen kosten. Das traditionelle Gericht Raclette wird dabei zusammen mit Brot, Kartoffeln, Gurken und Silberzwiebeln genossen.

Schritte Richtung Sonnenaufgang

Auch bei den Aktivitäten rund um Adelboden gibt es diesen Sommer einige Neuheiten zu entdecken: Wer alpines Lauftraining ebenso schätzt wie spektakuläre Sonnenaufgänge, kommt bei den beiden Sunrise-Trailtours vom 28. Juli und 25. August auf seine Kosten. In Begleitung eines lokalen Trailrunning-Profis steigen TeilnehmerInnen dabei für die ersten Strahlen zur Tschentenalp auf – vom Hausberg des Dorfes aus bietet sich den LäuferInnen frühmorgens eine atemberaubende Aussicht. Gibt es danach noch einige Mails zu beantworten? Business und Freizeit lassen sich im neu gestalteten Coworking Adelboden bestens verbinden – gleich über dem Tourist Center an der Dorfstrasse stehen dafür moderne Arbeitsplätze samt schnellem und sicherem Internetzugang bereit.

Versteckte Perlen am Wanderweg

Bereit für weitere Ausflüge in der Destination Adelboden-Lenk-Kandersteg? Die Schweizer Ferienregion hält eine Vielzahl von versteckten Juwelen bereit, die es zu entdecken gilt. Wandernde finden zum Beispiel mit dem wildromantischen Kiental ein so ursprüngliches wie stilles Gebiet. Die steilste Postauto-Strecke Europas bringt Passagiere dort zu einer der schönsten Etappen des berühmten Weitwanderwegs Via Alpina. An der Lenk wiederum locken unter anderem die imposanten Simmenfälle und die Quellen der Siebenbrünnen: Ausdauernde erkunden sie auf einer mehrtägigen Tour samt Alpenpässen und Bergseen. Wer nun noch Energie übrig hat, wandert ins authentische Gasterntal bei Kandersteg – Auenlandschaften und eine reiche Flora und Fauna gehören dort zur Kulisse.
www.meine-berge.ch

Weitere Auskünfte

Anja Sterchi, Market Manager Europe | Tourismus Adelboden-Lenk-Kandersteg
Tel. +41 79 739 70 86, anja.sterchi@be-welcome.ch

Die **Tourismusorganisation Adelboden-Lenk-Kandersteg** ist eine der sechs Destinationen im Kanton Bern und verantwortlich für Tourismusentwicklung, Vermarktung und Gästeinformation. Mit über 2 Mio. Logiernächten gehört sie zu den bedeutendsten alpinen Destinationen der Schweiz.



Adelboden-Lenk-Kandersteg

Adelboden-Lenk-Kandersteg is located in the heart of the Bernese Oberland – and that really says it all. This is a holiday region that awakens, nurtures and sustains a love of the mountains. No wonder these strong emotions in full view of picture-postcard alpine landscapes draw locals and guests together in the three valleys. It is no surprise either that our destination has adopted the motto #FeelTheLove because this feeling is with you from the very beginning of a relaxing or active holiday in the three valleys.

An astounding aquatic world

Adelboden-Lenk-Kandersteg is like a huge water tower whose alpine glaciers, snowfields and rainfall feed the rivers and clear mountain lakes of the Bernese Oberland. The famous Lake Oeschinen in the Kandersteg UNESCO protection area immediately catches the eye, and the mystical Blue Lake (Blausee) near Mitholz is also extremely popular. In addition, the destination has hidden turquoise gems such as the Arven lakes on Sunnbüel, which are only filled for a brief time each year but glisten all the more beautifully for it. Still waters may run deep, but the roaring ones are also a magnet for visitors. The countless springs of the Siebenbrünnen at Lenk or the 600m (approx. 2000 ft.) high Engstlige Falls are simply breathtaking. If you are someone who enjoys a refreshing dip after a day in the mountains, the “Gruebi” pool in Adelboden, which exudes early 1930s charm, is one of several places with open-air pools set against an alpine backdrop.

Active among the peaks

The mountain world of Adelboden-Lenk-Kandersteg moves not only the mind but also the body. A wide range of activities invite you to explore the Engstlig, Kander and Simmental valleys. To this end, an extensive network of excellently maintained paths criss-crosses the destination. In summer, for example, hikers can stretch their legs on the King’s Stage of the Via Alpina at Hohtürli, while runners can choose from four trail categories. At the same time, mountain bikers will find attractive downhill rides in Kandersteg and Adelboden, while downhill scooter riders set off from Sillerenbühl on dedicated pathways.



In winter, the focus moves from pathways to slopes. Snowsports enthusiasts can ski downhill on more than 200 km (125 miles) of pistes, while the world's elite compete in the legendary World Cup races each year on Chuenisbärgli. Cross-country ski trails are perfectly prepared in valley and on plateau alike. Kandersteg, in particular, is considered a true cross-country skiing paradise. Winter walkers, however, do not need to forego their favourite routes since the destination is also perfect for hiking across snowy meadows and through silent forests.

Relaxation in the chalet village

Outdoor activities may be a cornerstone of a mountain holiday, but the quiet, relaxing moments are just as special in Adelboden-Lenk-Kandersteg. The calming ambiance of the destination reveals itself in tranquil open spaces as well as in cosy chalet villages. The traditional buildings, the living alpine culture and the welcoming spirit of the locals also make the alpine getaway an enjoyable experience. There are always opportunities to experience the local customs and traditional handicrafts of the valleys first-hand, whether watching a splendidly decorated mountain procession, observing cheese making in an alpine dairy or visiting one of the many autumn markets in the region. In the evening, a huge range of wellness facilities and services round off a fulfilling day. Hotels with infinity pools, saunas and many professional health treatments can be found in Adelboden as well as in Kandersteg and Lenk.

For palate and ears

There are good reasons why connoisseurs and lovers of culture always make their way to the three valleys. After all, the spectrum of gastronomic highlights and artistic events in the heart of the Bernese Oberland is prominent throughout the year. There are culinary classics such as mountain cheeses, air-cured sausages and Switzerland's famous "Rösti" potatoes. Needless to say, gourmets appreciate the many nutritious regional dishes on offer. At the same time, the destination also has plenty of fine dining restaurants where Gault Millau award-winning chefs know how to prepare local ingredients in innovative ways. For the ears, there are cultural events whose charisma and reputation reach far beyond the canton's borders. At the Swiss Chamber Music Festival, for example, the best up-and-coming Swiss ensembles perform on various stages around Adelboden. This autumn concert series is also enriched with first-class supporting performances. At the beginning of January, the cultural highlight is Belle Epoque Week in Kandersteg – for when an entire village embarks on a dedicated journey through time, there are no limits to winter nostalgia.

More information about the villages

meine-berge.ch/en/

Image database

meine-berge.ch/en/media-relations/

Contact

Anja Sterchi, Market Manager
Silvia Nüesch, Public Relations

anja.sterchi@be-welcome.ch, Tel. +41 (0)33 533 04 72
silvia.nueesch@be-welcome.ch, Tel. +41 (0)33 533 04 84

Three valleys, one Destination

When you visit the three valleys that make up the destination of Adelboden-Lenk-Kandersteg, the first thing that comes to mind is sanctuary. Here, in this unspoilt natural setting, nestled in the heart of the Bernese Oberland, there's a little piece of personal paradise for everyone. Somewhere you'll feel welcomed, reinvigorated and inspired. Our mountains make you feel both completely free and totally at home. Whether you're looking to relax in the natural environment, push yourself to your limits in the mountains, or enjoy an exciting stay with your family – Adelboden-Lenk-Kandersteg has something for everyone.

Adelboden

With its wildly scattered chalets, the spectacular Engstligen waterfall and the Wildstrubel mountain range clearly visible from miles around, Lohnerdorf is the perfect spot for sports fans, gourmets, culture vultures and thrill seekers alike who are in search of an exciting break.

Population: 3,324

Area: 88 km²

Overnight stays: 784,000 (average)

Origin of visitors: 1. Switzerland, 2. Germany, 3. Netherlands, 4. France, 5. Belgium

Highest point: Grossstrubel 3,242.6 meters above sea level

Lowest point: Otternbach confluence in Engstlige 1,045 meters above sea level

Cable cars: 8

Bucket list: Adelboden village, Engstligen waterfall, Gruebi swimming pool, floral trail between Sillerenbüel and Hahnenmoospass, Tschentenalp giant swing, Adelboden-Lenk skiing region, AUDI FIS Ski World Cup

Lenk/ Simmental

With impressive waterfalls and crystal-clear mountain lakes, Simmental is a breathtaking spot for visitors. And then there are the alpine and mountain farms, the marmot trail for families, and the many mountain bike trails that make the valley an adventure for all the senses.

Population: 2,335

Area: 123 km²

Overnight stays: 630,000 (average)

Origin of visitors: 1. Switzerland, 2. Germany, 3. France, 4. Netherlands, 5. Belgium

Highest point: Wildstrubel 3,244 m

Lowest point: Niederdorf 1,020 m

Cable cars: 2

Bucket list: Lenk village, Betelberg, Iffigenalp, Metschberg, Siebenbrünnen waterfall, Adelboden-Lenk ski region

Kandersteg

It glistens and sparkles and changes color depending on the weather: Lake Oeschinen is situated in the heart of the UNESCO World Heritage site and is the jewel of Kandersteg. However, that's far from all this picture-postcard little village, located at 1,170 meters above sea level, has to offer.

Population: 1,300 residents

Area: 134 km² (fourth largest municipality in the Canton of Bern)

Overnight stays: 280,000 (average)

Origin of visitors: 1. Switzerland, 2. Germany, 3. UK, 4. France, 5. Benelux countries

Highest point: Balmhorn 3,698 m

Lowest point: Bühl 1,150 m

Cable cars: 3

Bucket list: Lake Oeschinen, Gemmi Pass, Gastern Valley, Allmenalp, Belle Epoque Week, Nordic Arena

Frutigen

Frutigen is the area's tourist hub, making it the ideal base for trips into the Alps – so ideal, in fact, that some people just stay right there. There's plenty to see and experience between Gehrihorn and Niesen.

Population: 6,939

Area: 72 km²

Overnight stays: 93,000 (average)

Origin of visitors: 1. Switzerland, 2. Germany, 3. Netherlands, 4. Italy, 5. France

Highest point: Winterhorn at 2,609 m

Lowest point: Kanderspitz at 756 m

Cable cars: 1

Bucket list: Elsigentalp, BLS Alpine transverse tunnel, Tellenburg Castle, Tropenhaus tropical garden, climbing tower, Choleren gorge, Lake Blausee

Kiental-Reichenbach

Anyone who likes wild and romantic spots is sure to love Kiental, with its barren moraines, untouched forests and endless hiking trails. There's rarely any cell phone signal here.

Population: Reichenbach 3,398 | Kiental 120

Area: 127 km²

Overnight stays: 74,000 (average)

Origin of visitors: 1. Switzerland, 2. Germany, 3. Netherlands, 4. Austria, 5. Belgium

Highest point: Blüemlisalp 3,664 m

Lowest point: Kander 690 m

Cable cars: 1

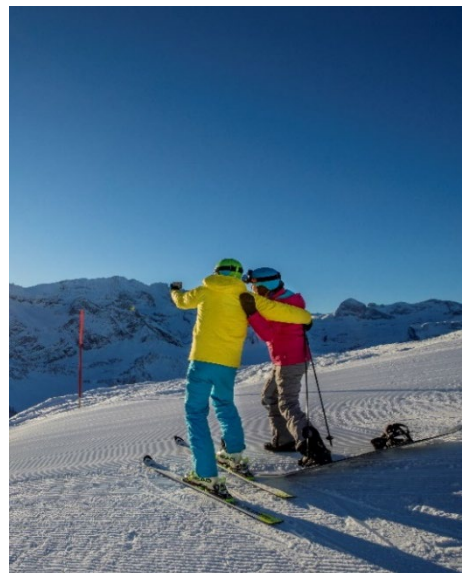
Bucket list: Griesalp, Ramslauen, Griesschlucht gorge

Adelboden

Summertime is all about the Alps in Adelboden. This is when the meadows burst into bloom – little wonder that hundreds of cows are drawn up there. The “Alpaufzug” – the annual procession of cows – up to Engstligenalp is particularly impressive. It passes the 600 m Engstligen Falls on the way to an enormous plateau, where the beloved children’s cartoon character Globi serves as an Alpine herder for the summer. The idyllic Alpine scenery between the Niesenkette mountain range and the Wildstrubel massif can be further explored on foot, along flower-fringed paths. While the hardcore hikers can tackle the stages of the outstanding Via Alpina, more leisurely walkers can take to the Vogellisi Trail and get to know one of the most famous figures in Swiss mythology. The breathtaking mountain scenery also serves as a backdrop for other summer activities. The colorful gondolas on the Tschentenbahn cable car take visitors up to the Giant Swing – a selfie hotspot loved by young and old alike. Meanwhile, on the other side, in Silleren, it’s all about the fat tires: in the scooters’ paradise that is Trottiland, guests can whiz along seven trails totaling 45 km toward the valley.



For those seeking a winter fairytale, there’s one to suit everyone in Adelboden. Featherlight, powdery snow and glittering snow crystals lie all around – but they’re just the start. With 210 km of beautifully groomed pistes, 72 powerful transport systems, a snow park and a freeriding arena, both beginners and pros are spoiled for choice. And for those who like their skiing more on the level, there are plenty of varied cross-country routes, too. Explore the Alpine winter wonderland in Lohnerdorf via romantic walking trails and exhilarating sledging runs. And once you call into one of the many mountain restaurants or Alpine huts for a bite to eat, there’s only one thing you’ll want to do: stay. The winter culinary offering is topped off by Europe’s largest igloo restaurant. Enjoy an authentic Adelboden winter experience on the Engstligenalp, surrounded by amazing ice sculptures and the heavenly aroma of fondue.

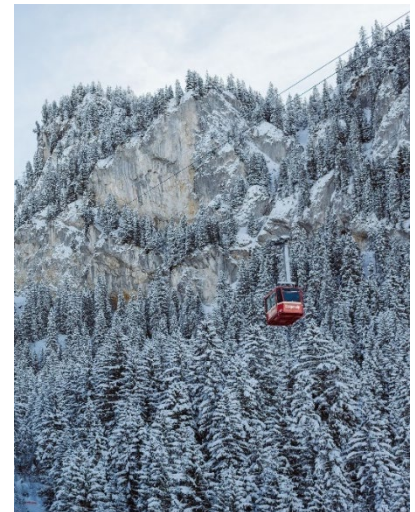


Frutigen

Right where the Kander Valley and Engstligen Valley meet, you'll find the biggest resort in the area. There's no doubt that Frutigen is the perfect starting point for summer excursions. Hikers heading in the direction of Ad-elboden will quickly come to the Hostalde suspension bridge, which hangs high above a wild meadow landscape, while farther up the river, the trail winds its way through the Choleren Gorge. On the return journey, you'll pass Tellenburg Castle – another of the region's landmarks. From the impressive tower rising from the ruins, it's clear that there's a huge range of activities on offer with something for everyone, including in the village itself. Just a 10-minute walk from the train station, many more highlights await, all in the same small area: among the soaring towers of Frutigen's vast climbing park, intrepid climbers can scale three levels and 64 stations to reach the summit. Right next to it, you can do laps to your heart's content – for free – on the bike and scooter pump track. Finally, another immediate neighbor, the KanderKultur cultural association, organizes outdoor events that attract thousands of visitors.



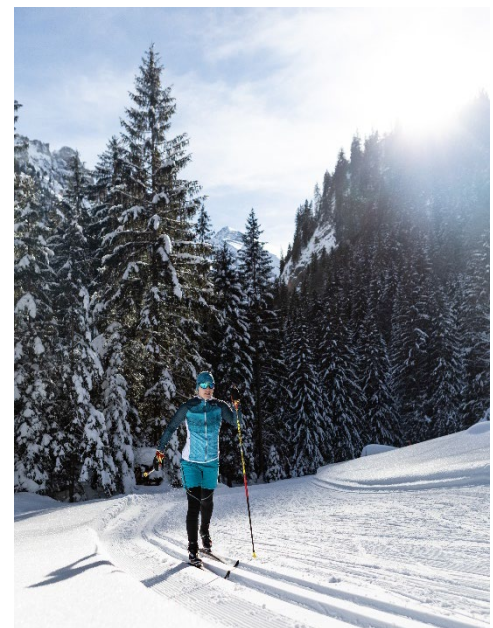
The fact that Elsigen-Metsch is always the first ski resort in the area to open up for winter says a lot about the pioneering spirit of the place. The family-friendly "white pearl" piste is nearby, which, alongside wide slopes and a panoramic view, offers two snow parks and ski-cross and racing circuits. Those who want to follow tracks as well as leave them can take part in a "KrimiSpass" detective adventure, collecting clues along the way. Meanwhile, the winter activities down in the village are just as exciting. The warm waters flowing from the Lötschberg Base Tunnel keep the climate in the Tropenhaus Frutigen tropical garden warm and humid. Here, visitors can wander among palms, exotic fruit trees and a large sturgeon farm – and then sample the products in the on-site restaurant. Warm water also awaits worn-out snow-sports participants in the municipal indoor swimming pool. After a few laps of the pool, you can prolong the feel-good factor in the Badi-Lounge, where KanderKultur brings events of all kinds to the stage.



Kandersteg

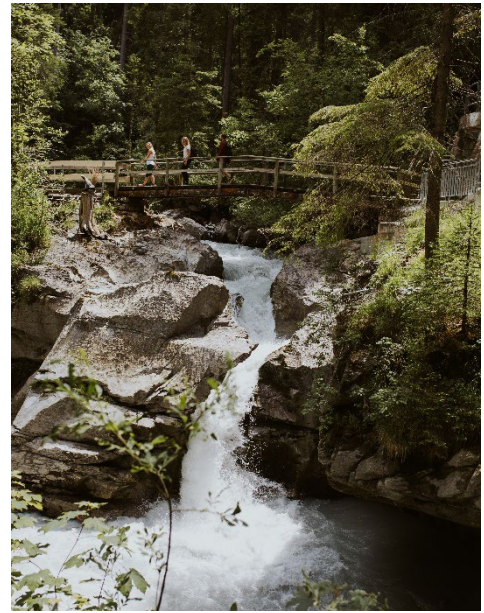
You'll be following in the footsteps of Goethe, Jules Verne and Mark Twain, all of whom discovered the pristine mountain landscape of Kander Valley in summertime and made it world-famous through their literary works. These days, the Lötschberg Tunnel has replaced the old mountain passes as the main transportation route. Nevertheless, the vast area around Kandersteg is more popular than ever as a destination for diverse Alpine activities. The tranquil village at 1,176 m above sea level serves as the starting point for numerous activities and can be quickly and easily reached by train, bus or car. In summer, marvel at the magnificent peaks of Blüemlisalp, Balmhorn and Altels from more than 550 km of walking, hiking and mountain trails – including the queen's stage of the Via Alpina. Many other gems lie waiting to be discovered along the way. One of the most precious is Lake Oeschinen – a UNESCO World Heritage Site. Here, guests will find rowboats, a restaurant and a rip-roaring toboggan run. On the historic route toward the Gemmi Pass, meanwhile, it's worth taking a detour to the Arvenseeeli – three small, crystal-clear lakes in the middle of the forest. More athletic visitors can tackle the downhill trail to Sunnbüel by bike or the via ferrata to Allmenalp.

During the winter season, visitors can explore the snow-covered fairytale landscape between Balmhorn and Blüemlisalp. The best way to do so is via the 52 km of cross-country skiing trails – Kandersteg is part of the largest cross-country skiing area in Switzerland, boasting guaranteed snow thanks to high altitudes, as well as wide valley sections. In addition, there are plenty of perfectly groomed ski and sledging slopes that are ideal for families. For those who wish to lay their own snowboard tracks in deep snow, check out the "Alpine Splitfest" to find kindred spirits for trips and tests. The area also offers a wide selection of winter hiking trails – including the ice walk across the frozen Lake Oeschinen, where walkers can watch the ice fishing at this UNESCO World Heritage Site. The beginning of the year is the cultural high season in the Kander Valley: in the last week of January, everything travels back in time for Belle Epoque week, when the whole village is decked out in old-fashioned style.

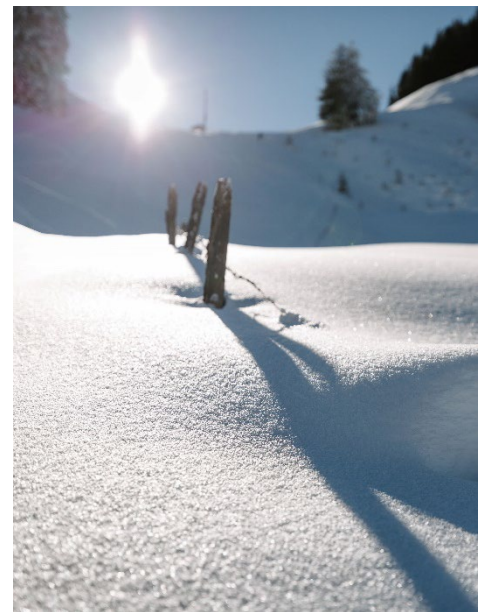


Kiental-Reichenbach

The landscape feels almost like the wilds of Canada: the flat meadowlands around Lake Tschingel, the barren moraines beneath the Gamchi glacier and the unspoiled forest of the federal hunting reserve give the Kiental a wild, romantic feel. The whole area is one of superlatives – starting with the journey to get there: passengers are taken on Europe’s steepest PostBus route, first along the banks of the lake, then past waterfalls and huge boulders to Griesalp. Above, the Sefinenfurgge and Hohtürli passes loom into view. These two magnificent passes on the queen’s stage of the Via Alpina, with their never-ending steps and the odd ibex here and there along the way, are part of the UNESCO World Heritage Site. The route from Griesalp down to Kiental, meanwhile, takes inquisitive walkers along the PostBus adventure trail. The trail is peppered with lots of fun information points about the cult yellow buses. And speaking of entertaining descents: one of the most extraordinary events in Kiental – the procession of the llamas down from Griesalp – takes place every year in the fall and marks the end of the Alpine summer.



The serenity and beauty of nature are two of Kiental’s greatest appeals in winter. The PostBus to Griesalp is tucked away in the garage, so the best way to discover the region in all its peaceful glory is to take a snowshoe tour. Marked trails spanning 30 km take you across the federal hunting reserve and either on up to Ramslauenen or, if you take the circular route, from the village of Kiental or Griesalp. The fabulous deep-snow slopes are also perfect for ski tours, of course, and are surrounded by the towering peaks of Bundstock, Salzhorn, Sattelhorn and Zahm Andrist. The cold weather is also ideal for those who enjoy ice-skating. Below the village, there’s a small wood with a natural ice rink, together with a cloakroom and toilet. The area is well lit, so you can do your laps or swing your hockey stick right up until 10 pm. On leaving the village, heading for Griesalp, you’ll need to swap your sharp blades for slim skis, as this is where two linked cross-country ski trails totaling 4 km start. Skiers can choose between the flat “Boden” trail or the more demanding “Loosplatte” route.



More information about the villages

meine-berge.ch/en/

Image database

meine-berge.ch/en/media-relations/

Contact

Anja Sterchi, Market Manager

Silvia Nüesch, Public Relations

anja.sterchi@be-welcome.ch, Tel. +41 (0)33 533 04 72

silvia.nueesch@be-welcome.ch, Tel. +41 (0)33 533 04 84



Interlaken Tourism – 15th April 2024 / jus

Press release

Interlaken: Nothing could be more Swiss

Turquoise Lake Brienz resembles a shining emerald on one side of Interlaken, while deep blue Lake Thun sparkles sapphire-like on the other; green hills, dramatic cliffs, and mighty mountain slopes tower all around. Deep in the valley, the magnificent snow-capped Jungfrau glows alongside the world-famous Jungfrauoch - Top of Europe. The indescribably and uniquely beautiful landscape surrounding Interlaken has been entrancing guests from Switzerland and all over the world for decades.

Interlaken: In the heart of Switzerland

Although Interlaken is in the heart of nature, the holiday region and its attractions are easily accessible. By train, the region is an hour from Bern, two hours from Lucerne, Basel, and Zurich, and three hours from Geneva and Milan. Situated in the middle of the country, Interlaken is directly linked to the busy network of punctual Swiss trains as well as the national road network. There are direct links from all of Switzerland's major cities and airports as well as numerous European centres.

Interlaken: Rail experiences

Another long-held dream came true when the GoldenPass Express opened up a direct connection from Montreux to Interlaken. The wonderfully panoramic route takes in Lake Geneva, Gstaad and the typically Swiss Simmental valley, also passing Lake Thun on the way to Interlaken. The line is an extension to the equally memorable Brünig line that links Lucerne and Interlaken.

Meanwhile, the new Eiger Express has been in operation for a number of months, transporting guests even faster to the Jungfrauoch – Top of Europe. The ultra-modern tricable car between Grindelwald and the Eiger Glacier has cut the journey time by fully 47 minutes. The train directly connects the Bernese Oberland Railway in the valley with the Jungfrau Railways more than a thousand metres higher up. From Eiger Glacier station, the train carries passengers up through a tunnel more than a century old to the snow and ice of the world-famous Jungfrauoch.

Interlaken: Alpine wine-growing in Spiez

Alpine viniculture in Spiez is an unexpected delight – and a tradition that surely surprises many visitors from around the world. The village itself is proud to be part of the «most beautiful bay in Europe». In the middle of this very bay, at the foot of the castle, are the vineyards. The highlight of the wine year is the «Spiezer Läset» harvest festival in mid-September, after which the vines change colour significantly, shining out brightly high above the bay. Meanwhile, the first snows lend a dusting of icing sugar to the Niesen, which rises above Lake Thun like a pyramid – the crowning glory on a mesmerizing scene. The fine wines can also be further explored on the Spiez Vineyard Sensory Adventure Trail.

Interlaken: Adventure capital of Europe

Numerous unforgettable outdoor activities are available at any time of the year. From leisurely «soft adventures» such as raquette rafting, jetboating, and kayaking tours to those in the «sheer adrenaline» category, such as paragliding or skydiving, those seeking adventure are sure to find what they're looking for.





Interlaken: Craftsmanship and tradition in Brienz

Tradition and modernity go hand in hand in Interlaken. A perfect example of this is the Trauffer World of Experiences near Brienz. As well as being a successful businessman, company owner Marc Trauffer is one of the most prominent musicians in Switzerland. His carved wooden cows are traditional (and very popular) Swiss souvenirs. The World of Experiences brings woodcarving to life in a modern (and literally tangible) way. Those visitors who wish to, can also try their hand at carving and painting the wooden cows. Trauffer World of Experiences is right next to the Ballenberg Swiss Open-Air Museum – making an ideal pair!

Interlaken: Hidden gem above the lake - Axalp

At 1535 m above sea level and just 35 minutes away by bus from Brienz lies the charming place called Axalp. The village, with its pretty chalets, wooden houses, and alpine huts is laid out like a panoramic terrace and situated on an idyllic plateau high above Lake Brienz. The majestic mountain landscape and the intense turquoise of the glistening lake in the valley below leave nothing left to be desired. Whether one wants to go skiing in winter or bike and hike around the picturesque Lake HInterburgseeli in summer – Axalp is the ideal starting point for mountain and nature experiences.

Interlaken: Hidden gems by the lake - Hilterfingen-Hünibach & Oberhofen

Just a few minutes outside the city of Thun, there are more hidden gems waiting to be discovered. The villages of Hilterfingen-Hünibach & Oberhofen are directly situated along the shores of lake Thun. There one can find everything to practice water sports or relax on a historical steamship on lake Thun while enjoying the natural landscape. The mountains against the steel blue sky invite to take extensive walks through one of the enchanting parks and discover a bygone world when visiting the fairy tale castles.

For further information about the Holiday Region Interlaken, please visit the website of Interlaken Tourism www.interlaken.ch/en and to get access to our media kit including photos, please click [here](#).



Grindelwald
Wengen
Mürren
Lauterbrunnen
Haslital

Jungfrau Region



Kelly Joss

Junior Market Manager

kelly.joss@jungfrauregion.swiss

Direct +41 33 854 12 52

Mobile +41 33 854 12 48



Website



Images



Stories



Videos



Activities



Events



Sales Manual



Swiss Skyline

Eiger . Mönch . Jungfrau

Schilthorn
Piz Gloria

Schilthorn area

The cable car operated by Schilthorn Cableway Ltd. connects the Lauterbrunnen Valley from Stechelberg with the idyllically situated, car-free mountain villages of Gimmelwald and Mürren, before ascending via the middle station at Birg in just 32 minutes to the 2,970-metre-high Schilthorn summit. The ride alone is a thrilling experience, as the cabin climbs past thundering waterfalls, sheer rock faces, over lush meadows and craggy alpine landscapes; always accompanied by unimpeded views of the UNESCO World Heritage Site with the Eiger, Mönch and Jungfrau. This is why the Schilthorn area stands for **VIEW** – breathtaking vistas, **THRILL** – adrenaline-fuelled experiences, **CHILL** – pure relaxation in the enchanting mountain landscape. In all seasons, visitors from all over the world come here to enjoy a wealth of activities or simply soak up the peace and tranquility in an exceptional and genuine atmosphere.

www.schilthorn.ch



Schilthorn – Piz Gloria

www.schilthorn.ch

Schilthorn – Piz Gloria

Surrounded by more than 200 alpine peaks and embedded in a pristine mountain environment, the Piz Gloria is located at 2,970 metres above sea level. The instantly recognisable summit building takes pride of place on the Schilthorn summit. Let your gaze wander over spellbinding wraparound views of the Eiger, Mönch and Jungfrau, flanked by an array of peaks in the Bernese and Valais Alps. To one side, the shimmering blue waters of Lake Thun, the pretty Swiss central plateau and the mountains of the Jura chain stretch out towards the horizon. Excellent visibility provided, you can even see as far as the Black Forest in Germany or the Mont Blanc massif in France.

Diners can watch the scenery glide by while enjoying a delicious table-served meal at the Piz Gloria Restaurant, which rotates around its own axis in 45 minutes. The culinary offer ranges from simple snacks to typical regional dishes. Highlights include the generous Schilthorn Brunch, which is served daily until 2 pm, the specially branded Piz Gloria Burger and the Piz Gloria afternoon platter.

https://schilthorn.ch/12/en/Piz_Gloria



Schilthorn – Piz Gloria



360°-Restaurant Piz Gloria

Allmendhubel Flower Park

While the grownups enjoy a delicious meal at the cosy panorama restaurant with its spacious sun terrace, the little ones can let off steam in the Flower Park adventure playground. A gateway to the fascinating alpine environment, this expansive play meadow beckons with a wealth of interesting facts about the flora and fauna of the Alps. This is where children can explore a marmot burrow, fly with butterflies, milk cows and try their hand at cheesemaking. Solid timber structures take on the shape of giant flowers and oversized insects. Its colourful and imaginative design transforms this playground into a spectacular world of wonders. Life on an alp is a true adventure!

The water labyrinth in the Flower Park beckons with action-packed duels. Who will reach the finish line the fastest without getting splashed? The clock is running! It's a fun, cooling and refreshing experience – and not just on warm summer days!

Pleasure-seekers can take in the unrivalled views of the stunning alpine peaks on one of the adjacent curved wooden loungers. The Skyline Chill loungers are the perfect spot to relax and unwind!

https://schilthorn.ch/26/en/Adventure_playground_Flower_Park



Flower Park, Allmendhubel

Thrill

THRILL stands for spine-tingling sensations, exploring the rugged mountain landscape and the ultimate mountain feeling. Nowhere is this experience more authentic than at Birg station. Built as an extension of the spacious sun terrace, the Skyline Walk observation deck is suspended over the vertical abyss, with panoramic vistas and exhilarating views into the void. Constructed from steel and reinforced glass with a grated floor, its angular design blends seamlessly into the craggy landscape.

At the opposite end of the terrace is the entrance to the Thrill Walk, which leads down into the perpendicular walls of the imposing rock massif. The steel structure clings to the rock before swerving under the observation deck and cableway to end below the cable car station. Features including a crawl-through tunnel, glass-bottomed floor, rope and cattle grid lend an additional frisson of thrill to this spine-tingling adventure.

https://schilthorn.ch/23/en/Thrill_Walk



Skyline Walk Observation Deck, Birg



Thrill Walk Cliff Path, Birg

Schilthornbahn 20XX

The Schilthornbahn 20XX project envisages a traditional cable car between Stechelberg and Mürren with a passenger capacity of 800 persons per hour. The goods and luggage logistics will be fully automated over this route. Above Mürren, Funifor cable cars will connect to the stations of Birg and Schilthorn. The Funifor system stands out thanks to its high wind stability and the fact that it allows for compact, low-rise station buildings. An integrated architectural concept for the new station buildings was drawn up with the Federal Office of Culture, the Cantonal Office for the Preservation of Monuments and the Bern Office of Cultural Heritage.

The following innovations in comparison with the existing cable car are significant:

- 3 sections Stechelberg – Mürren – Birg – Schilthorn instead of 4 sections as before.
- The Stechelberg – Mürren section will be built as a conventional cable car.
- With the other two sections Mürren – Birg and Birg – Schilthorn, there will be 2 single track Funifor cable cars, which can be operated or serviced independently of each other.
- The length of the incline has been reduced from 6,935 m to 5,685 m (-18%).
- The pure travel time will be reduced from 20.4 minutes today to 11.8 minutes in the future.
- The number of connections (Gimmelwald) can be reduced.
- According to the timetable, the full travel time from Stechelberg to Schilthorn can be reduced from 32 minutes to 22 minutes.
- The passenger capacity will be increased from around 400 persons/hr. (concession for 600 persons/hr.) to around 800 persons/hr. in the future.
- The connection times at the changing stations can be optimised, so that the journey time can always be maintained at well under 30 minutes (currently at peak times > 50 minutes)!
- The Schilthorn will now be accessible 365 days a year!

THE GRAND HOTEL BELVEDERE

OPENING SUMMER 2024

CURRENTLY
UNDER
RENOVATION



Located in Wengen, the gateway to Jungfrauojch, the resort awaits at an elevation of 1274 meters. Whether it's winter or summer, this retreat is a haven for nurturing the body, mind, and soul.

A UNIQUE PLACE

The warm welcome starts during the arrival in Lauterbrunnen. Valet service for your car and luggage assistance for the transfer, in the historical Cog Railway built in 1893, are available. Enjoy a panoramic view during the 10-minutes journey to Wengen. Arriving at the UNESCO Heritage Site, you will be picked up by our e-car to the resort. The Grand Hotel Belvedere, a 5* hotel, combines the Hotel Waldrand and the Hotel Belvedere. With 90 rooms and suites it fits perfectly for individual travellers, couples and families. It also offers rooms for the comfort of disabled guests. With mountain views encompassing Schilthorn, Silberhorn, and Jungfrau Mountain, Wengen serves as the gateway to Jungfrauojch and remains free from car traffic. Easy in reach, winter or summer, the train continues the journey further up to 3500 meters, even the transfer over the mountain to Grindewald via «Valley Hopping» is possible.

SPACIOUS AND COMFORTABLE ROOMS

Each architectural detail, meticulously crafted in the timeless Alpine style, showcases the rich artisan heritage of the Berner Oberland. The interiors strike a balance between urban functionality and warmth, seamlessly integrating modern features for a contemporary touch. Most of our 71 Superior and Deluxe bedrooms have a Jungfrau view and a beautiful balcony. Starting from 22sqm options, there are interconnected rooms available to enhance the comfort of families.

- 25 SUPERIOR BEDROOMS, GARDEN VIEW (22sqm): 2 ADULTS (4 PRM*)
- 25 SUPERIOR BEDROOMS, JUNGFRAU VIEW (22sqm): 2 ADULTS (3 PRM)
- 6 DELUXE BEDROOMS, GARDEN VIEW (25sqm): 2 ADULTS (3 PRM)
- 15 DELUXE BEDROOMS, JUNGFRAU VIEW (25sqm): 2 ADULTS (10 PRM)

*PRM: ROOMS FOR PEOPLE WITH REDUCED MOBILITY

ELEGANT SUITES

The 19 suites are configured as large bedrooms combined with a lounge area and dining area, balcony, separate shower and bathtub.

- 5 JUNIOR SUITES FAMILY, GARDEN VIEW (29sqm): 3 ADULTS OR 2 ADULTS & 1 CHILD (1 PRM*)
- 8 JUNIOR SUITES FAMILY, JUNGFRAU VIEW (32sqm): 3 ADULTS OR 2 ADULTS & 1 CHILD
- 3 FAMILY SUITES (37sqm): 3 ADULTS OR 2 ADULTS & 1 CHILD
- 1 SUITE, GARDEN VIEW (34sqm): 3 ADULTS OR 2 ADULTS & 1 CHILD
- 2 BEAUMIER SUITES (36sqm): 3 ADULTS OR 2 ADULTS & 1 CHILD

*PRM: ROOMS FOR PEOPLE WITH REDUCED MOBILITY



CULINARY EXPERIENCES - RESTAURANTS, TERRACES & BARS

Deeply rooted in the Berner Oberland, the Grand Hotel Belvedere is a celebration of the tastes of the Jungfrau region. Its food and drinks are traditional but spiced with curiosity and seasoned with a pinch of wanderlust. Open to the world, the Grand Hotel Belvedere invites you to explore the finest offerings of the region.

At Grand Hotel Belvedere, our food and drinks touch the heart and raise the spirits. Simple, yet seductive, our cuisine makes the most of remarkable products sourced from the local area of the Bernese Oberland, transformed by the skills and passion of our talented Chefs. Our restaurants, Brasserie Belvedere and the Restaurant Waldrand, take the best of Swiss traditions and rework them with the contemporary touches and techniques. Come to discover the Grand Hotel Belvedere's new modern classics: The forest mushroom ragu, pure alpine salmon or the Luma ribeye with our own mountain hollandaise. Or simply enjoy our Fondue on our Sonnenbad terrace. The best of Switzerland, reimagined.

**THE SPA**

The facility includes three single and one double treatment rooms, two saunas, a Turkish bath, as well as both indoor and outdoor pools. Additionally, there's an outdoor trail winding through the hotel's private forest. Participate in yoga, meditation, and Pilates sessions, alongside personalized training for a tailored workout experience.

Indulge in treatments that capture the essence of the region, like the Alpen Herbs Fango, a 300-meter power run to revitalize your metabolism, and morning water aerobics to kickstart your day. Complemented by a culinary focus on nutrient-rich cuisine with minerals and vitamins, the well-being of your body will harmonize your heart and soul.

Our team of experience managers will lead you on tours of paragliding, biking, river rafting and many more exciting ways to experience our mountains.

**MEETINGS & INCENTIVES**

Depending on the seating, our meeting and incentive space can host up to 80 people (90sqm).

Technical aids are available on request.

OUR RATES INCLUDE

- DAILY A LA CARTE BREAKFAST
- FREE WIFI
- SPA ACCESS
- COURTESY SHUTTLE SERVICE TO AND FROM WENGEN TRAIN STATION
- ALL TAXES EXCEPT CITY AND ACCOMMODATION TAXES

OUR SERVICES

- SKI ROOM
- SPA & WELLBEING
- BEAUMIER EXPERIENCES
- WELCOME DESK AT LAUTERBRUNNEN
- LUGGAGE TRANSFER FROM / TO LAUTERBRUNNEN / WENGEN / AIRPORT
- KIDS CARE
- SKI RENTAL

ACCESS: INTERNATIONAL AIRPORT

- GENEVA : 3-4H
- ZUERICH : 2.5-3H





Projekt Hotel Mürren Palace



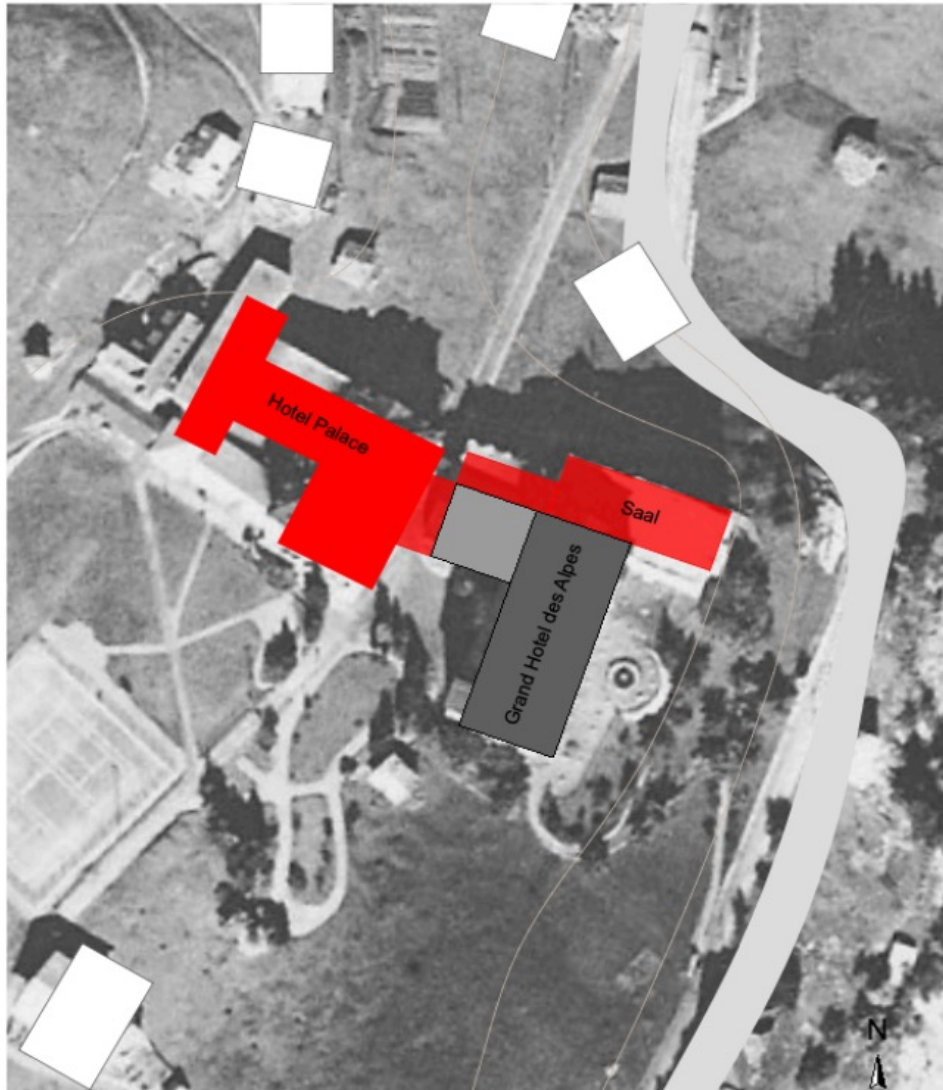
Geschichte des ältesten Palace der Schweiz



Zeichnung von 1895

Hotel des Alpes

- **1874** Bau des Hotels
- **1884** Wiederaufbau nach Brand: Hotel Palace des Alpes
- **1891** Eröffnung BLM



1911

Bau-Erweiterung Hotel Palace und Saal

- Bau Saal
- Hotel bleibt parallel zur Talseite
- Westseitige Erweiterung zum Hotel Palace



1928

Brand und Wiederaufbau

- Nach Brand bleibt der Saal bestehen
- Drehung des Hotels
- Ursprüngliches des Alpes verschwindet
- Markante Präsenz von Seite BLM

1983-1991

Abriss der Hälfte des Hotels zugunsten des Baus vom Sportzentrum und der Résidence





Jüngere Geschichte

Mürren | 4. Juni 2009

Zwangspause wegen «unseriösen» Vorgängern

Hotel Alpin Palace diesen Sommer geschlossen



Ende der «Ära Jäggi» im Alpin Palace

Der Basler Unternehmer bleibt bis 2009 VR-Präsident



Vor ein paar Wochen hatte quasi über Nacht das Direktorium des Alpin Palace Hotel in Mürren gewechselt. Doch auch die Eigentumsverhältnisse haben sich verändert. René C. Jäggi, der seit fast 20 Jahren Besitzer des Hotels war, hat seine Anteile an eine kasachische Investorengruppe verkauft. In einem Interview nimmt er Stellung.

Mürren | 8. März 2013

Kommt es im Palace zur Versteigerung?



Das Traditionshotel in Mürren steht vor der Liquidierung. Ein Gläubiger forderte den Konkurs. Das entsprechende Verfahren hat begonnen und dürfte sich noch über einen längeren Zeitraum erstrecken.

Das Palace-Hotel wurde zu einem Schnäppchenpreis verkauft



Das Konkursamt Oberland muss Details zum Verkauf des Palace-Hotels offenlegen. Die Besitzerin, die Palace Avenir AG, nutzt die Publicity, um ihre Zukunftspläne für das Haus bekannt zu machen.



Konzept und Projekt des neuen Palace

(Bauskizzen nicht alle auf dem letzten Stand)



Vision

Das Murren Palace Hotel ist in der Geschichte des Dorfes Murren und der atemberaubenden Schönheit seiner Umgebung verwurzelt. Das Hotel ist das historische Zuhause der Freundschaften der frühen Skirennpioniere, ein Mittelpunkt des Dorfes und der Treffpunkt.

Unser Ziel ist es, diese 150-jährige eng mit Murren verbundene Geschichte des Hotels in eine erfolgreiche und nachhaltige Zukunft zu führen und das «**Murren Palace**» wieder zum einzigartigen «Place to Be» in Murren zu positionieren. Unser Hotel soll, zusammen mit der imposanten Naturkulisse, ein Erholungs- und Erlebnisort für anspruchsvolle Individualisten, Geniesser und Naturliebhaber sein, mit dem Anspruch «**alpine Lebensfreude**» zu bereiten. Persönlich geführt, mit einem flexiblen, weltoffenen Team.



Konzept

Der Schlüssel zur erfolgreichen Umsetzung unseres Hotelkonzeptes im «Mürren Palace» sind unsere **Mitarbeiterinnen und Mitarbeiter**. Sie sind Teil unserer Einzigartigkeit. Das Team geht mit hoher Identifikation für unsere Werte, flexibel, authentisch, kommunikativ und unkompliziert auf die individuellen Wünsche unserer Gäste ein.

Unser **Zimmerangebot** im Hauptgebäude (35 Einheiten) und dem neuen Suitehouse (14 Einheiten) mit total 125 Betten basiert neben den Doppelzimmern vor allem auf grossen komfortablen Suiten und Apartments, welche die Ansprüche auf Komfort und Flexibilität optimal erfüllen. Mit Angeboten wie getrennten Schlafzimmern für Kinder oder Freunde, Kitchenettes und einer Auswahl von Dienstleistungen ermöglichen wir einen auf Ihre individuellen Wünsche ausgestalteten Aufenthalt.

Unsere moderne **Gastronomie** erleben Sie in dem als Lounge gestalteten, grossen Jugendstilsaal mit Showküche, Bar und anregend gemütlicher, bequemer Möblierung (90 Plätze). Der historische Saal ist der kommunikative Treffpunkt und ermöglicht die Erfüllung der kulinarischen Gelüste vom Frühstück bis zum after Dinner Drink, sowohl für unsere Hotel-Gäste als auch für die Bewohner von Mürren und für andere Mürrener Gäste. Unser Bistro und die grossen Terrassen mit umwerfender Aussicht runden das Angebot ab.

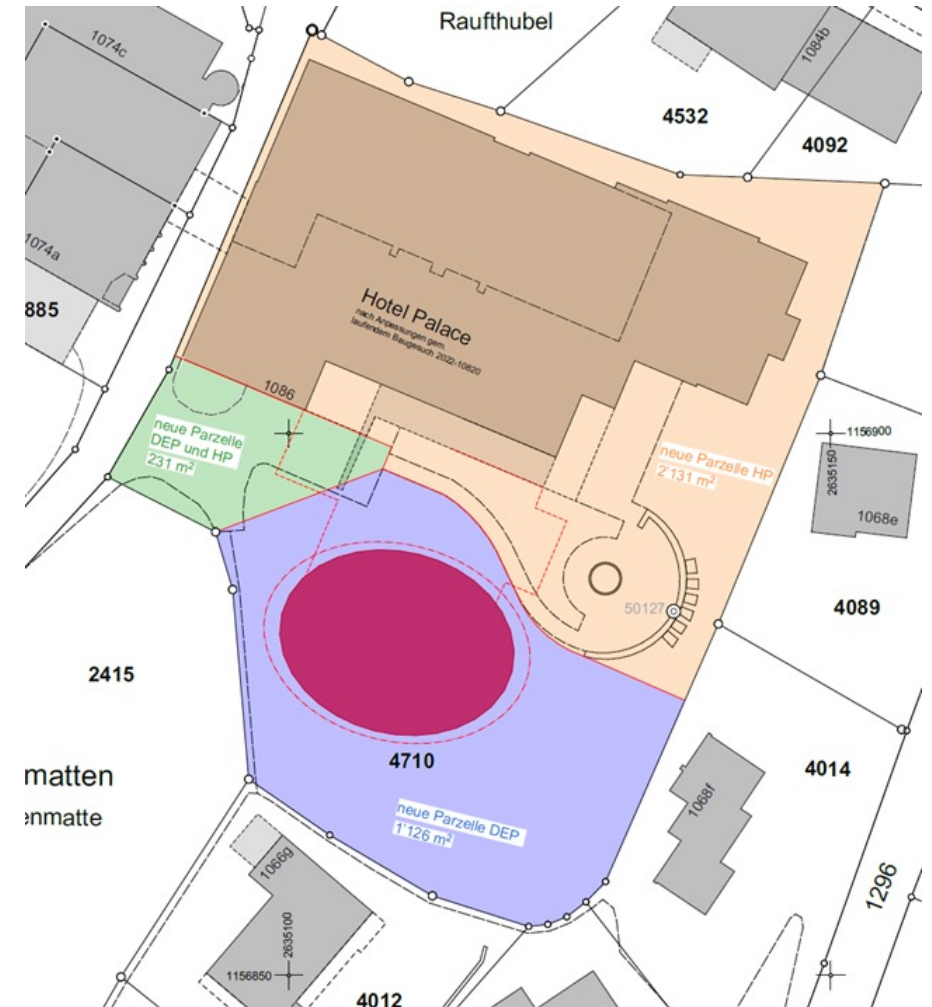
Eine Vielfalt von **Zusatzangeboten** im Hotel und dem inhouse verbundenen Alpinen Sportzentrum bieten Sport und Genuss für gross und klein: Hallenbad, Sportplätze im Sommer, Eisbahn im Winter, Fitness- und Spa-Angebote, Body & Mind Aktivitäten, Playground und Kids Club.

Grundvoraussetzungen für unsere Tätigkeit sind hohe Qualitätsansprüche, innovative Angebote und ein achtsamer Umgang mit unseren Ressourcen.

Neues Projekt Mürren Palace****



- 49 Zimmer und Suiten in 2 Gebäuden
- Lounge (90 Plätze) mit Gastronomie, Bar, Terrasse; Bistro
- Spa, Body&Mind im Neubau, Kinderbereich im Bestand



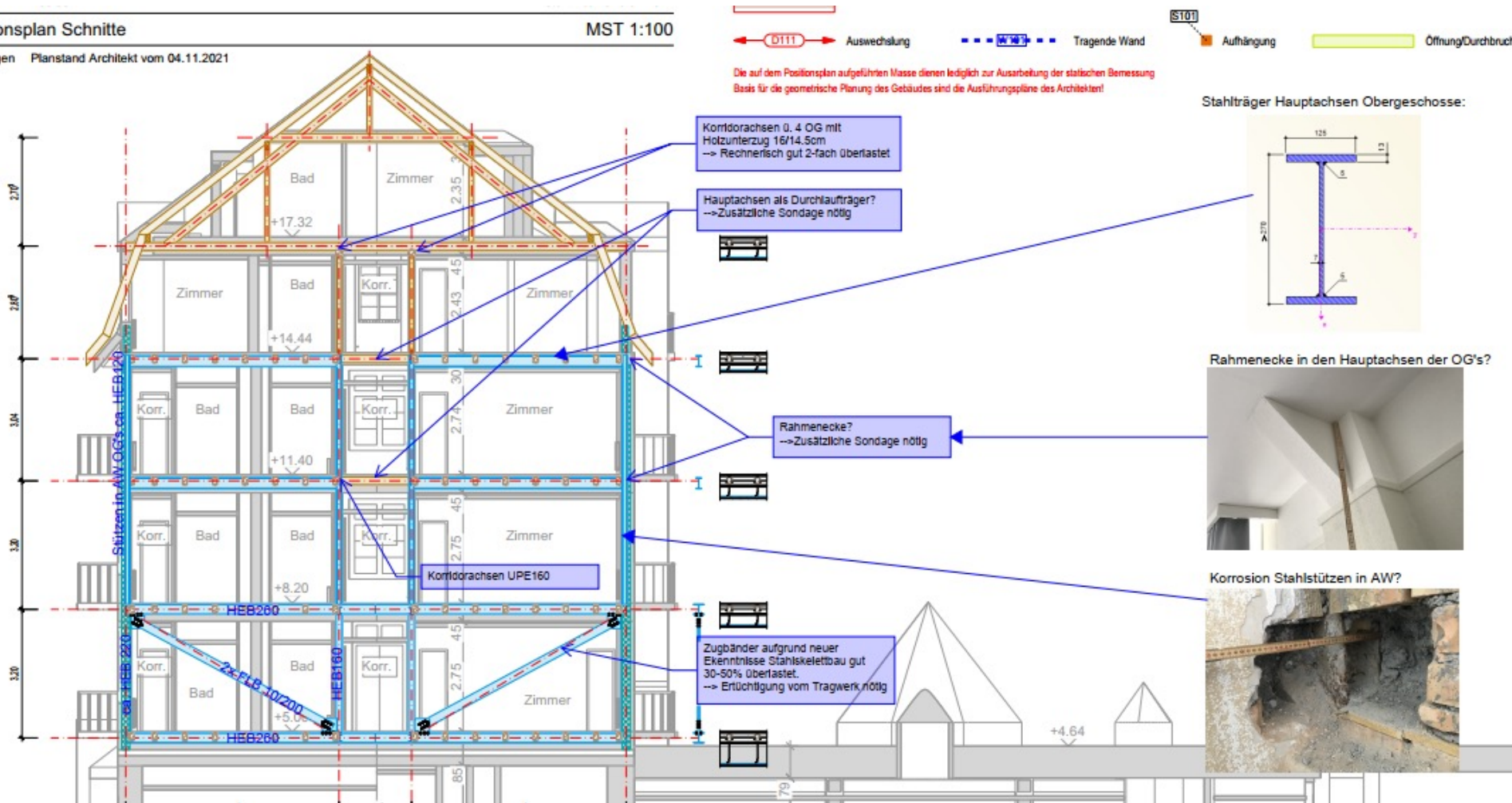
Konstruktion und Sanierung Bestand



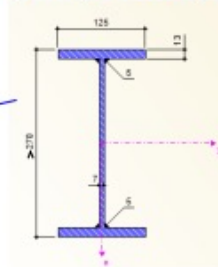
Positionsplan Schnitte

MST 1:100

Grundlagen Planstand Architekt vom 04.11.2021



Stahlträger Hauptachsen Obergeschosse:



Rahmenecke in den Hauptachsen der OG's?

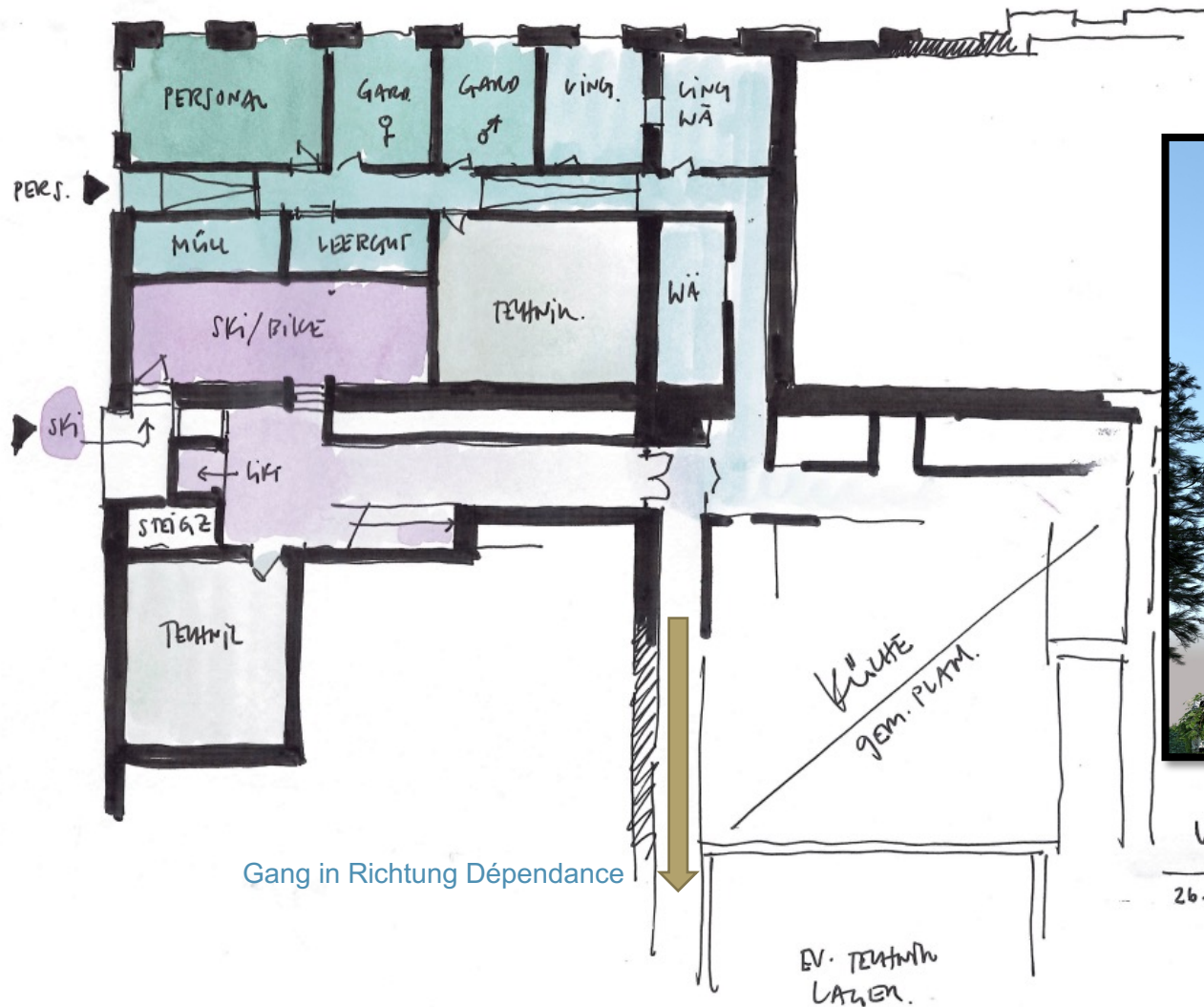


Korrosion Stahlstützen in AW?





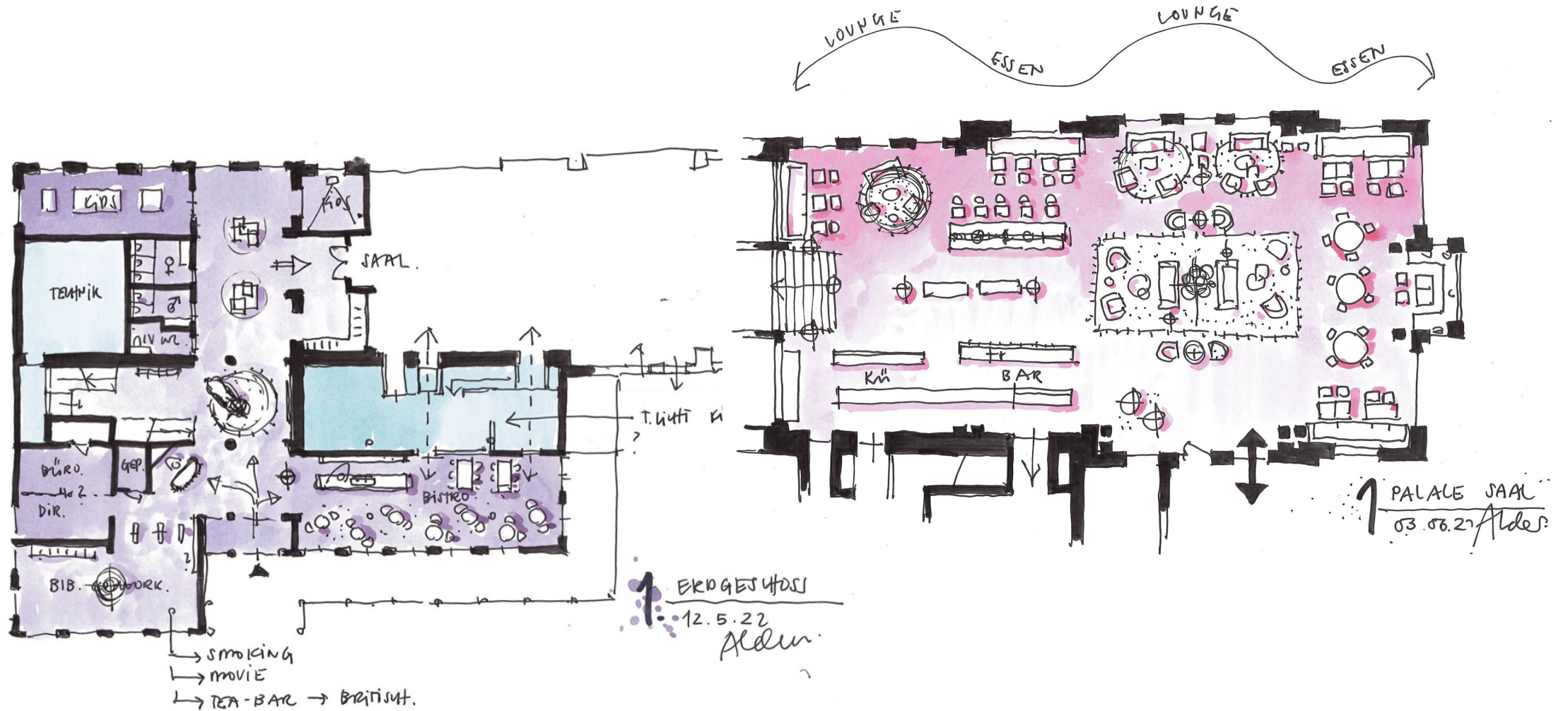
Layout Untergeschoss Altbau



UNTERGESCHOSS
26.4.22
Aren.



Layout Erdgeschoss Altbau

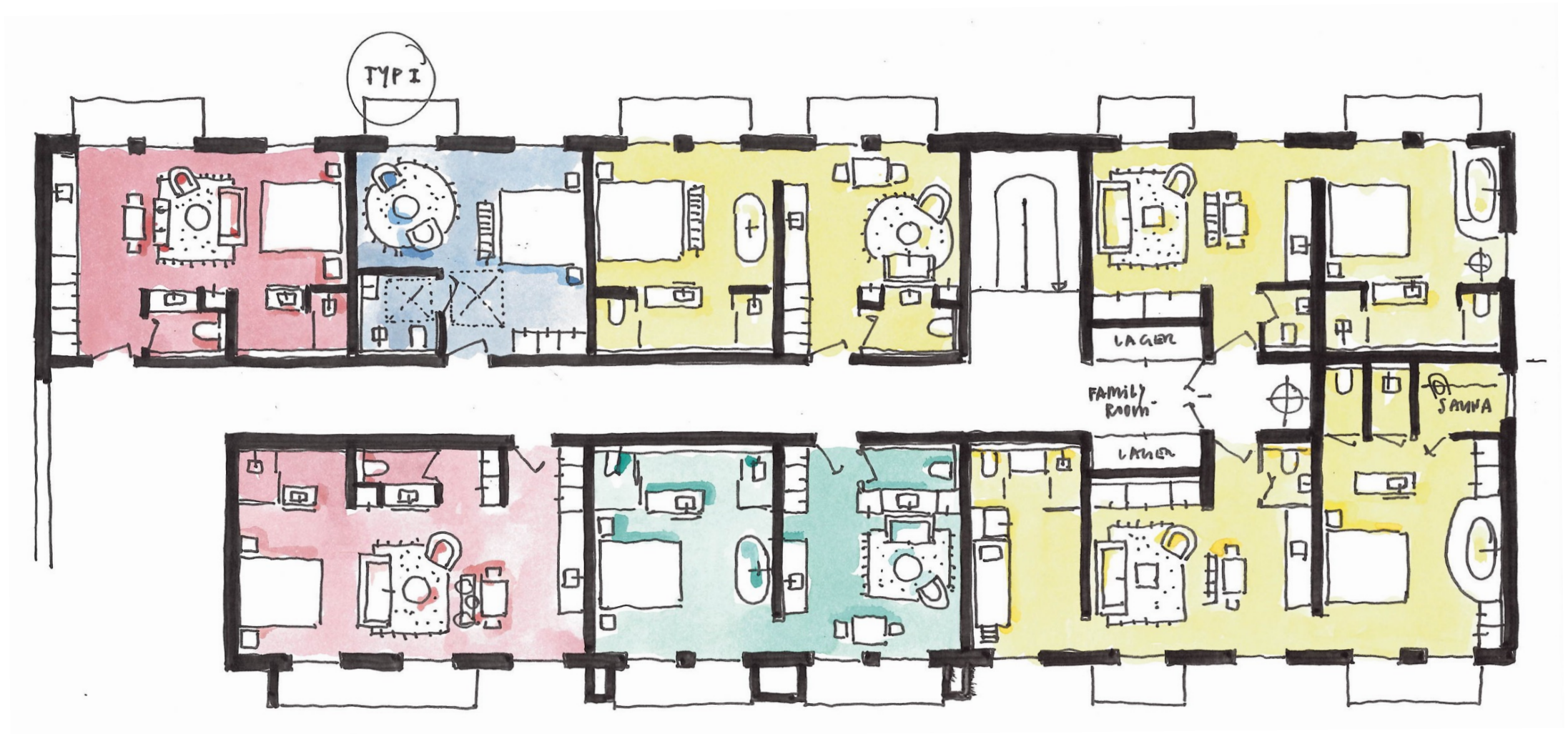


Stilelemente Saal, Teil Lounge





Layout Zimmergeschoss Altbau

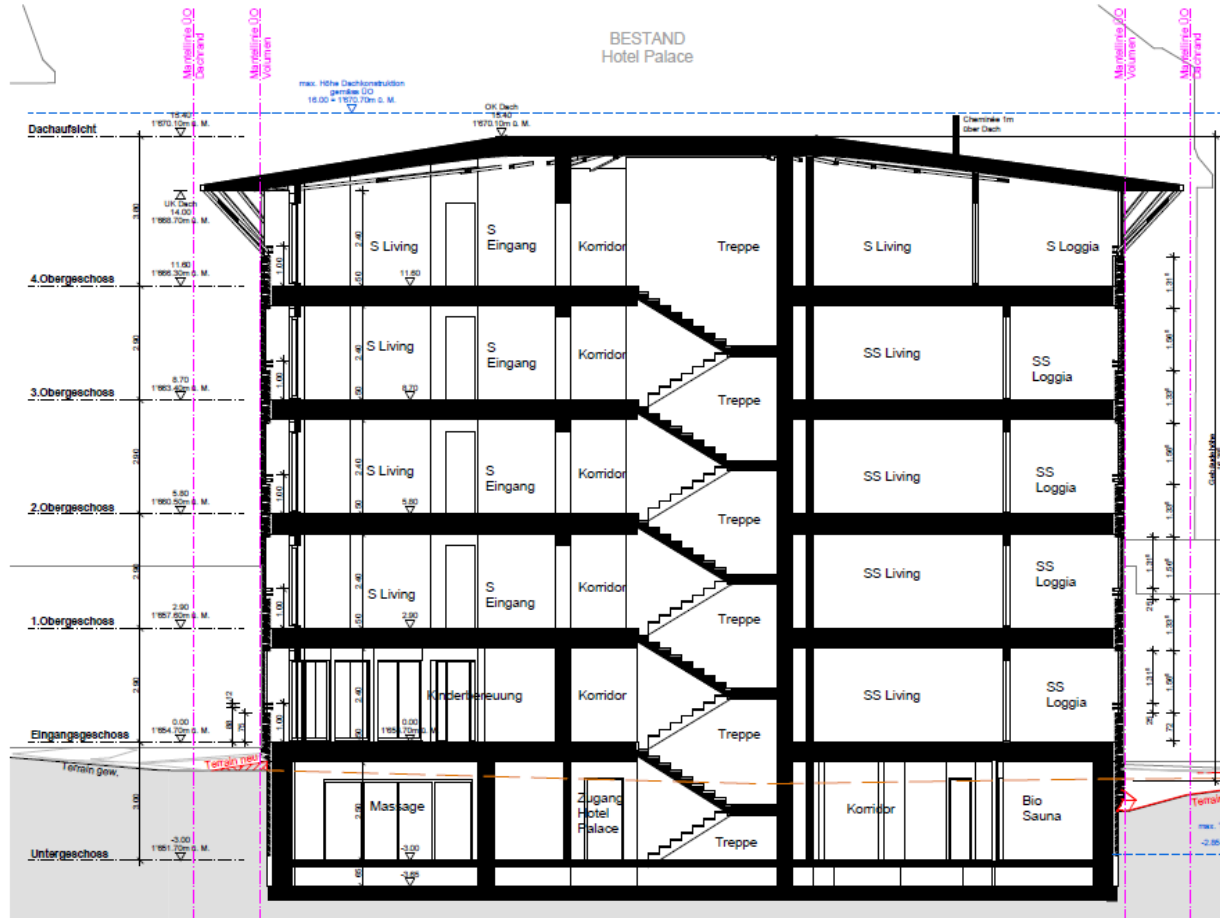




Stilelemente Zimmer, Suiten Altbau (Rendering in Arbeit)



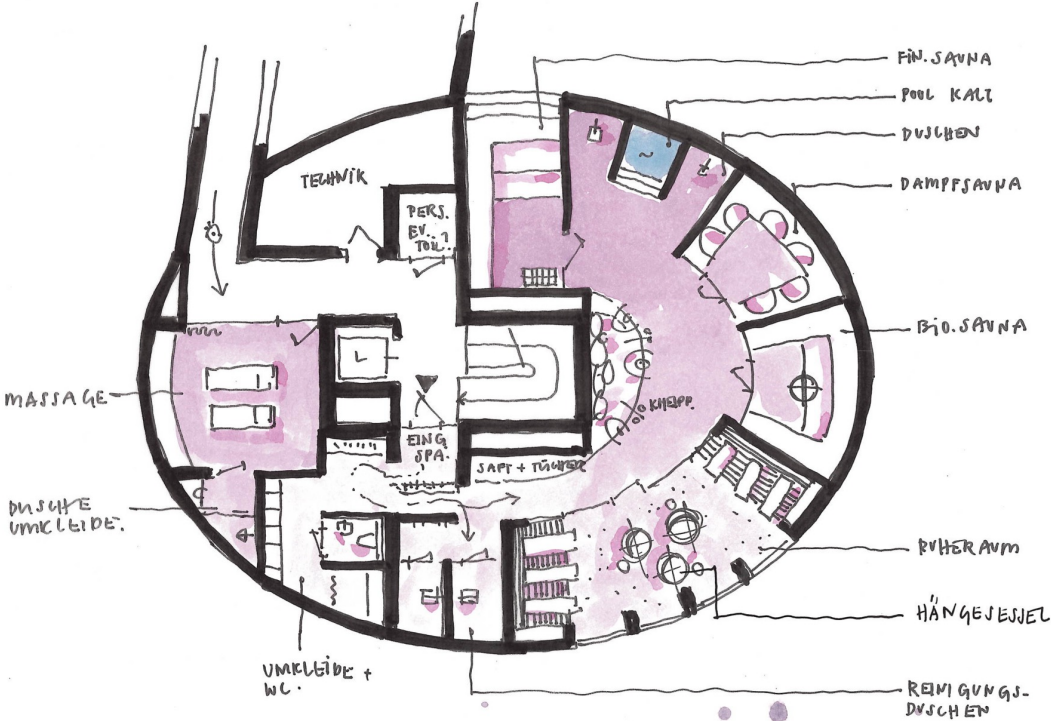
Neubau (über Gang im UG mit Bestand verbunden)



Layouts Neubau



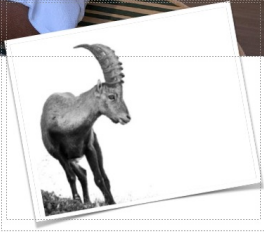
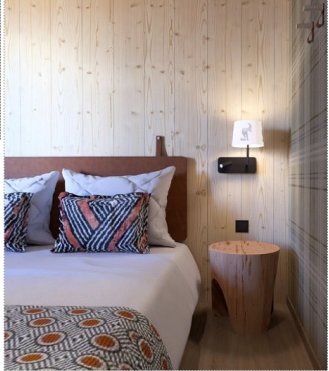
Untergeschoss mit SPA



4 Obergeschosse



Renderings Suiten/Apartments Neubau





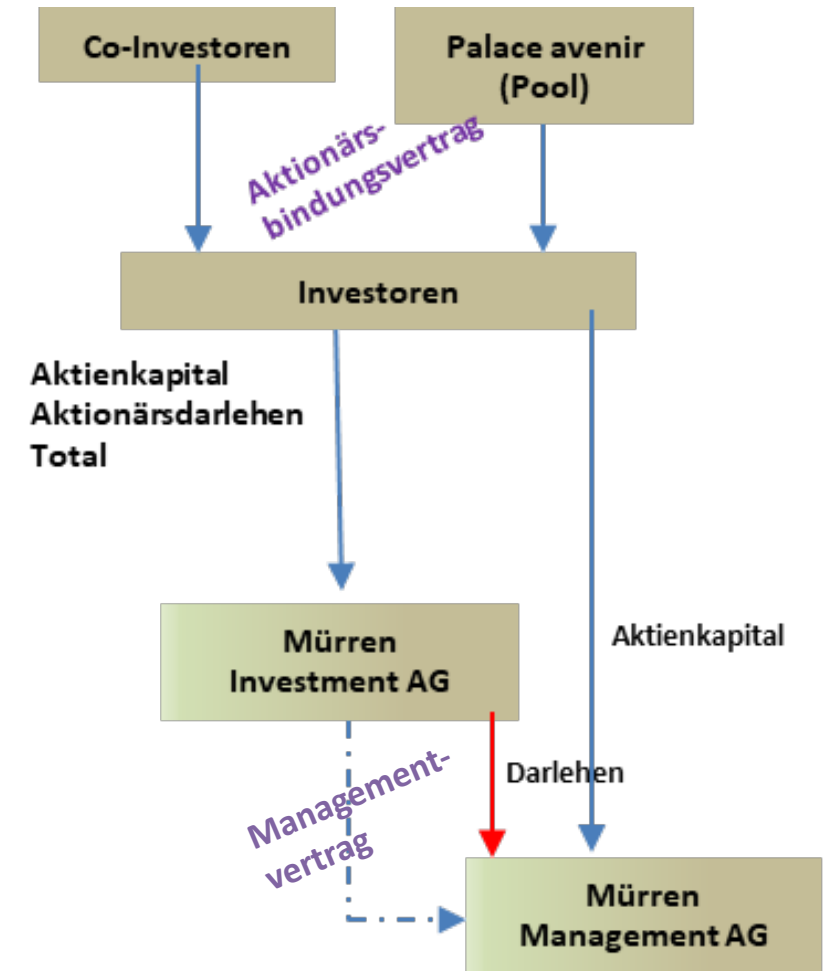
Organisatorische Struktur, Zeitplan

Organisatorische Struktur

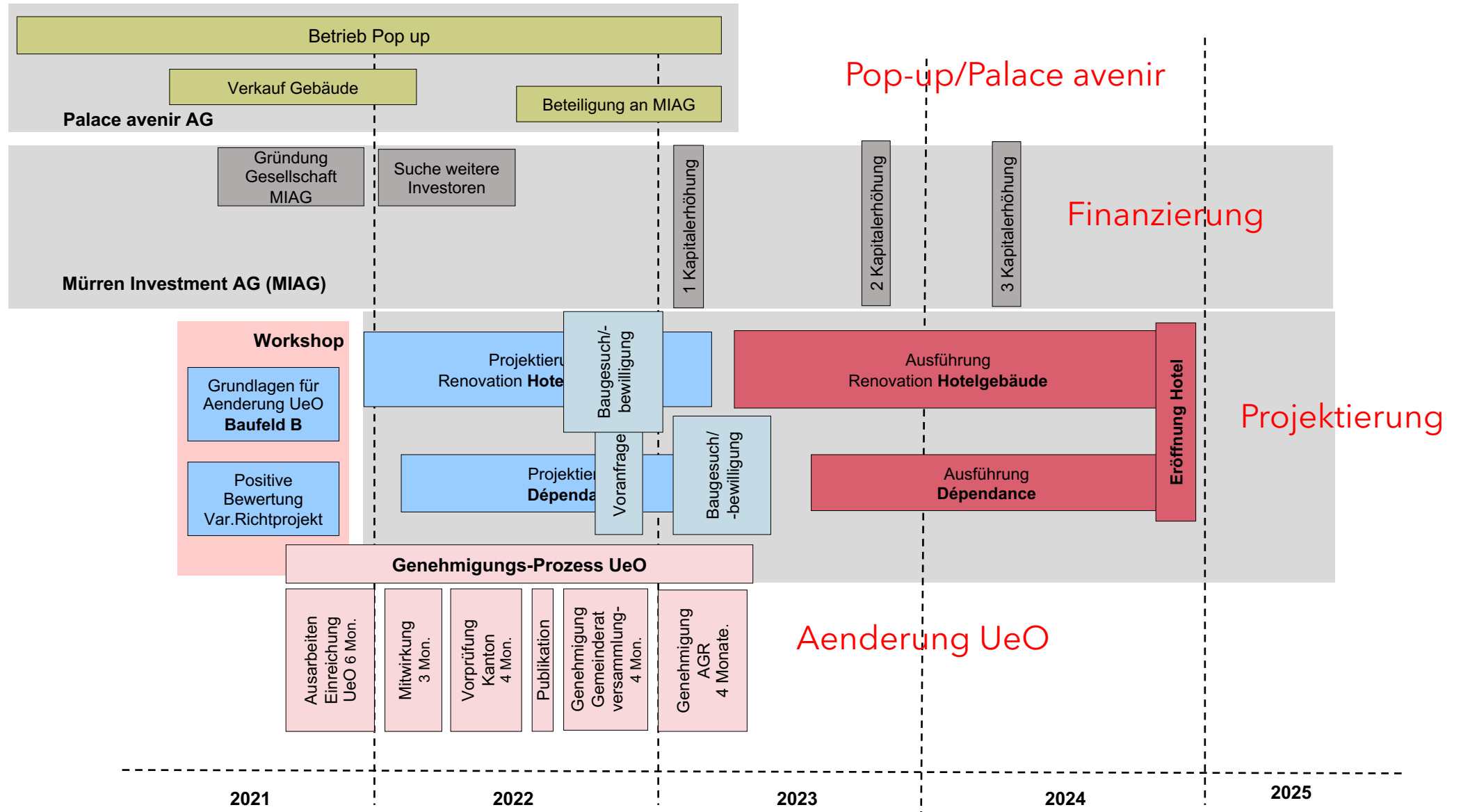
Gremien, Beratung



- Verwaltungsrat: Peter Wirth, Heinz Karrer, Stephan Anliker, Julia Lunn
- Beratung Hotel: Andreas Richard, Volkart&Richard Hotelconsultant
- Generalplaner: DuckschAnliker
- Bauherrenberater: Universal AG, Patrick Gurtner
- Innenarchitektur: ARGE Francesca Alder (Bofor), Numa Varley
- Branding, Marketing: Blitz & Donner
- Gastgeber: Sam Bichsel (GF Mürren Management AG)



Zeitplan Gesamtprojekt



Eckwerte Businessplan



- Umsatz CHF 6.5 Mio
 - Logement CHF 4.5 Mio (Auslastung 55% auf 335 Oeffnungstage)
 - Gastronomie CHF 2.0 Mio
- EBITDA >CHF 1.5 Mio
- Anzahl Mitarbeiter ca. 35



muerren-palace.ch